



Director's Update Brief  
Thursday

21 May 2009 1100 EDT  
Day 33

Day of Personal Protective Equipment (PPE)



## Novel Influenza A (H1N1) Key Events 21 May 2009



- Novel Influenza A (H1N1) Declarations
  - HHS: Downgraded to Phase 1 – Awareness (9 May 2009)
  - WHO: Pandemic Phase 5 (29 Apr 1600 EDT)
  - USG: Public Health Emergency declared (26 Apr 2009)

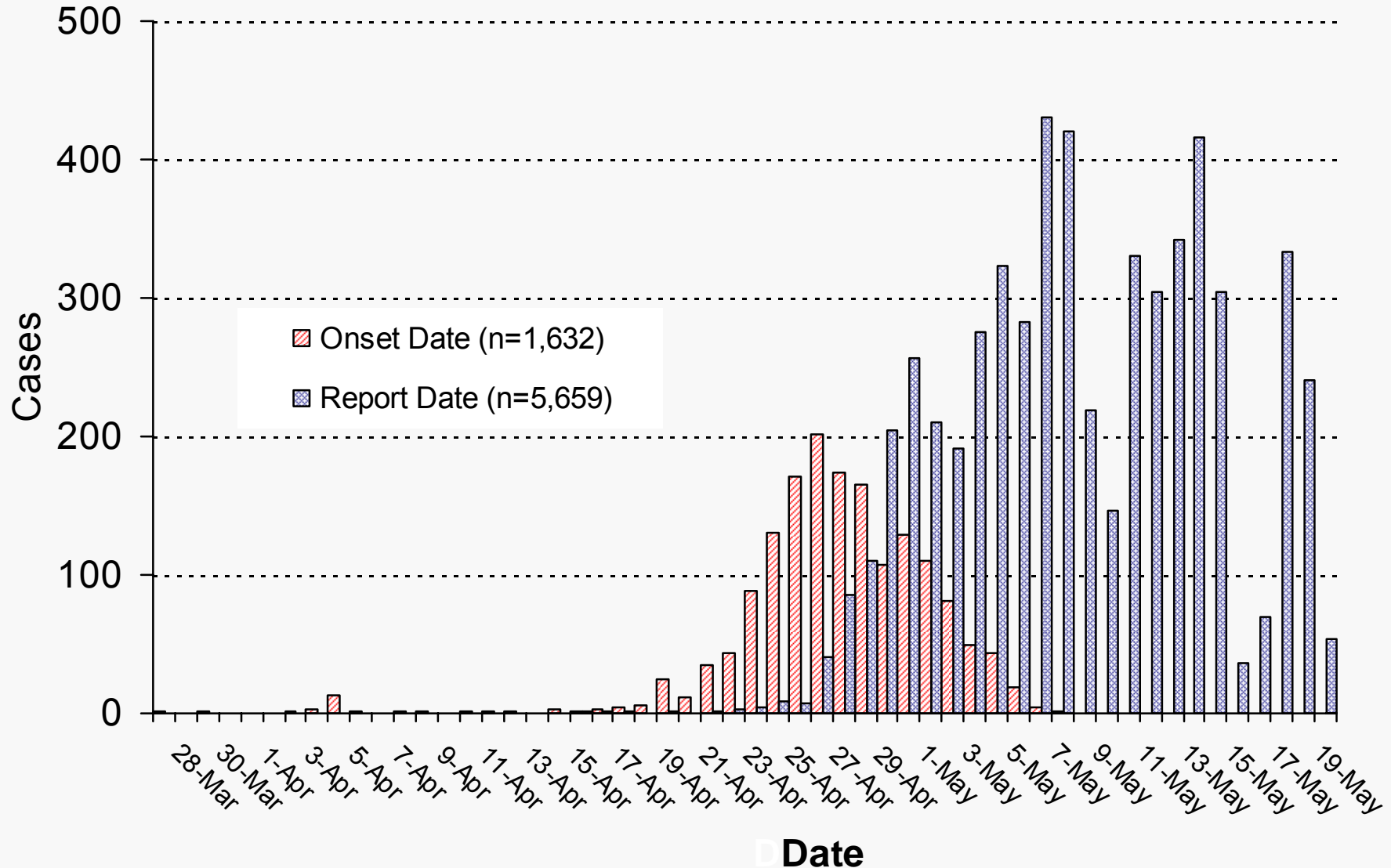
- US Cases:

	Total Confirmed and Probable		
	Cases	Hosp	Deaths**
<b>US TOTAL Cases INCL DC</b>	<b>5764</b>	<b>249</b>	<b>9</b>
<b>US TOTAL States Affected INCL DC</b>	<b>48</b>	<b>35</b>	<b>6</b>

- International Cases: 11,034 in 41 Countries, 85 total deaths
  - *WHO.int 21 May 2009 0655 EDT*
- Deployments: 58 deployed, 4 pending, 205 potential



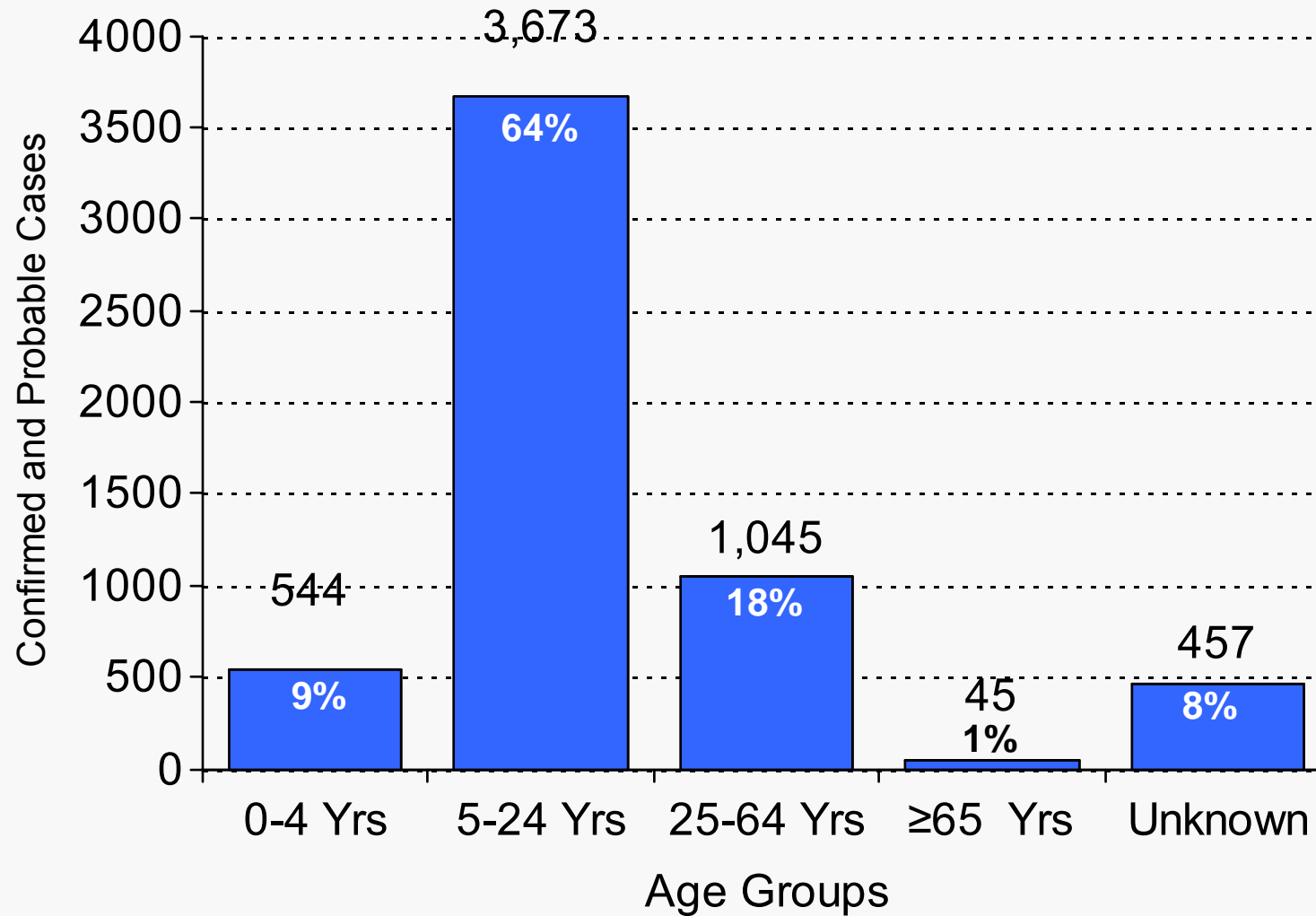
Epidemiology/Surveillance  
Novel Influenza A (H1N1) - 21 May 2009 1100 EDT  
Confirmed and Probable Cases by Onset\* and Report Date



\*Information on onset date no longer presented after May 12 due to change to aggregate reporting



Epidemiology/Surveillance  
Novel Influenza A (H1N1) - 21 May 2009 1100 EDT  
Confirmed and Probable Cases by Age (n=5,764)





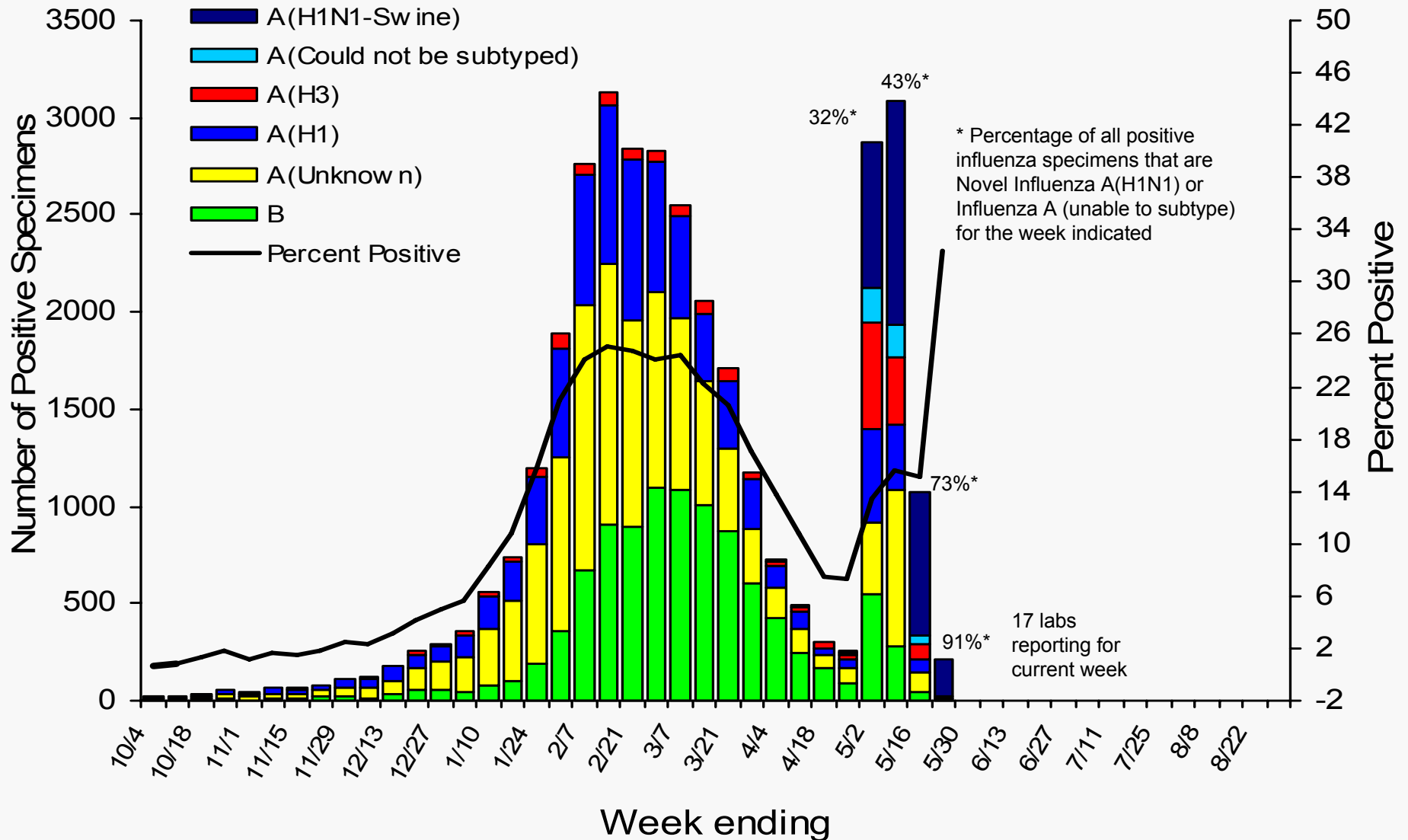
Epidemiology/Surveillance  
Novel Influenza A (H1N1) - 21 May 2009 1100 EDT



- ***WHO/NREVSS Collaborating Laboratories***
  - Seasonal influenza A (H1), A (H3), and B viruses co-circulated with novel influenza A (H1N1) viruses
- ***Influenza-associated Pediatric Deaths***
  - No new influenza-associated pediatric deaths reported. 08-09 total = 61
- ***ILINet (week ending 16 May)***
  - % of ILI outpatient visits ↓ the national baseline; overall trend remains stable
- ***122 Cities Mortality Reporting System (graph)***
  - % pneumonia and influenza deaths remains within expected
  - % deaths due to pneumonia and influenza are decreasing
- ***Geographic Spread of Influenza as Assessed by State and Territorial Epidemiologists – state reporting:***
  - Widespread: 8 states                      Regional: 14 states + DC
  - Local: 15 states                              Sporadic: 13 States

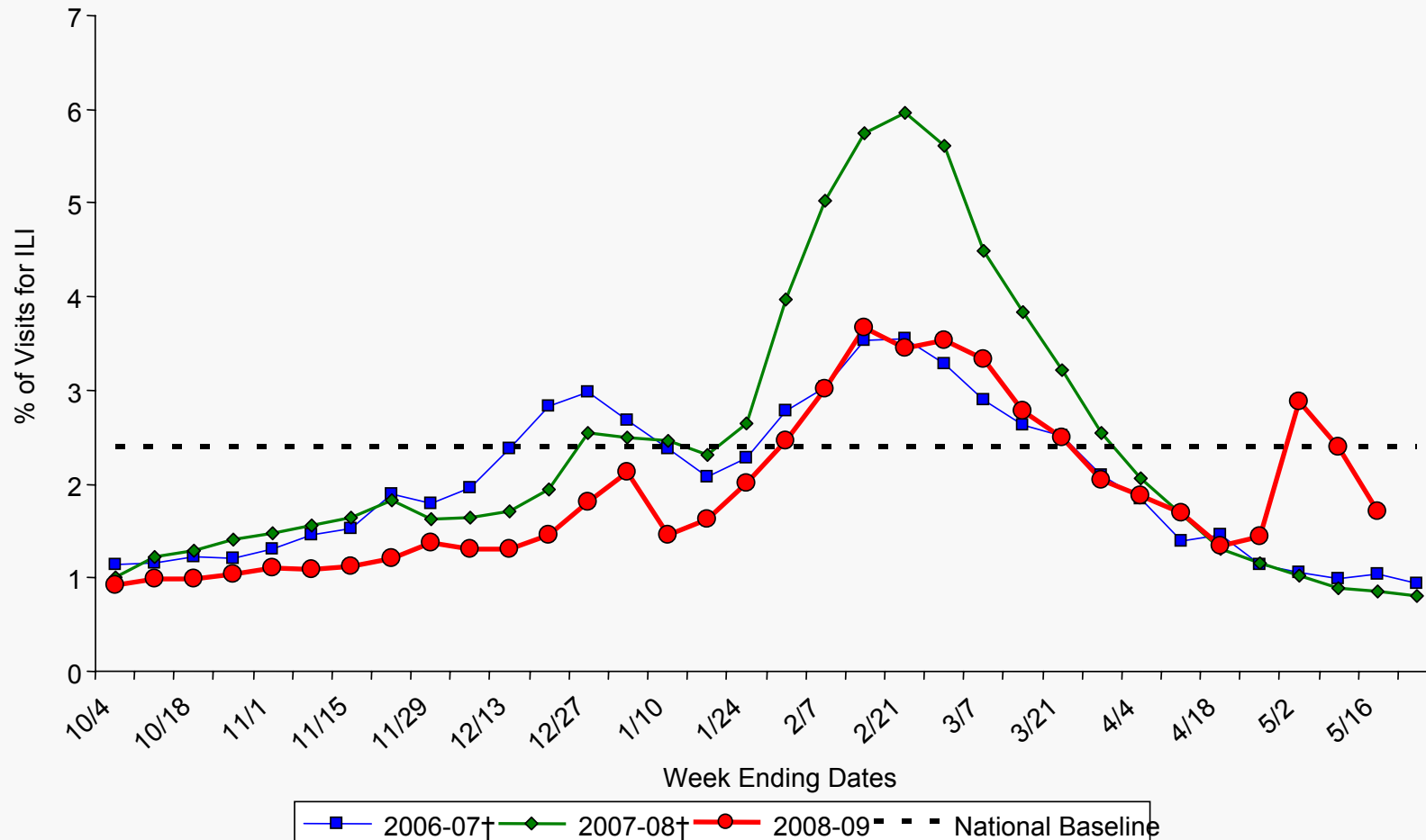


Epidemiology/Surveillance  
Novel Influenza A (H1N1) - 21 May 2009 1100 EDT  
U.S. WHO/NREVSS Collaborating Laboratories Summary, 2008-09





Epidemiology/Surveillance  
 Novel Influenza A (H1N1) - 21 May 2009 1100 EDT  
 Percentage of Visits for Influenza-like Illness (ILI) Reported by  
 the US Outpatient Influenza-like Illness Surveillance Network (ILINet),  
 National Summary 2008-09 and Previous Two Seasons



NOTE: Week ending dates vary by influenza season

\*Preliminary ILI data for week 19, as of May 20, 2009 (n=867 weekly ILI reports received from 49 states)

† There was no week 53 during the 2006-07 and 2007-08 seasons, therefore the week 53 data point for those seasons is an average of weeks 52 and 1.

Data are provisional and will not be officially released by the CDC until 1100 EDT

Internal Use Only (FIUO)---For Official Use Only (FOUO) NOT FOR FURTHER DISTRIBUTION -Sensitive But Unclassified (SBU)



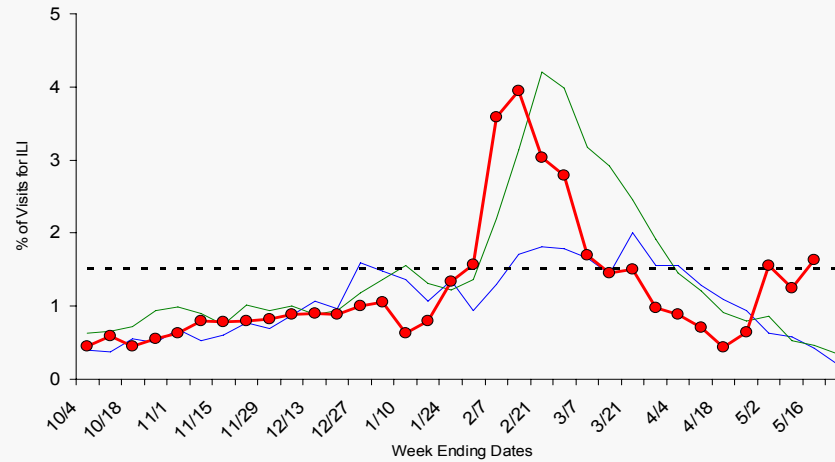
# Epidemiology/Surveillance

## Novel Influenza A (H1N1) - 21 May 2009 1100 EDT

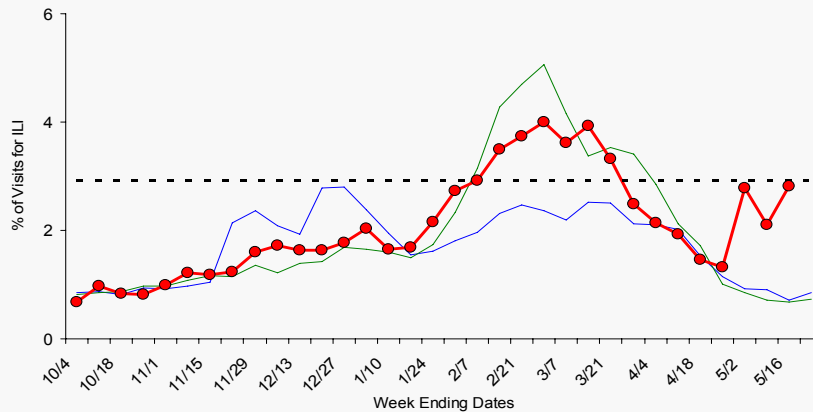
### Current Influenza Surveillance – ILINet Regions I-III



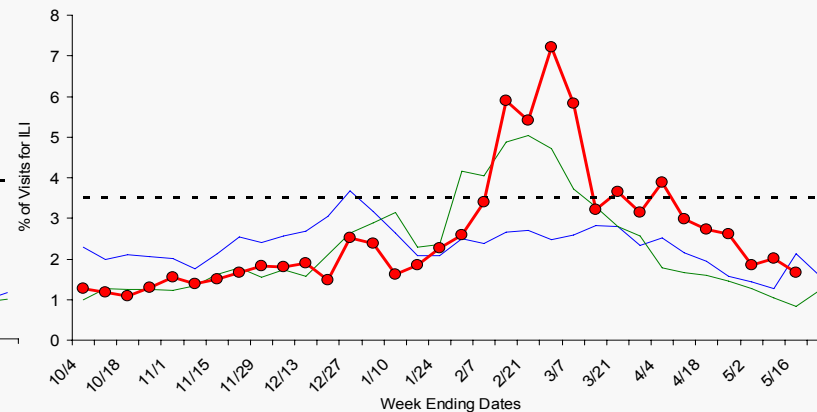
#### Region I - CT, ME, MA, NH, RI, VT



#### Region II - NJ, NY



#### Region III - DE, DC, MD, PA, VA, WV



NOTE: Scales differ between regions

NOTE: There was no week 53 during the 2006-07 and 2007-08 seasons, therefore the week 53 data point for those seasons is an average of weeks 52 and 1.

**Data are provisional and will not be officially released by the CDC until 1100 EDT**

**Internal Use Only (FIUO)---For Official Use Only (FOUO) NOT FOR FURTHER DISTRIBUTION -Sensitive But Unclassified (SBU)**



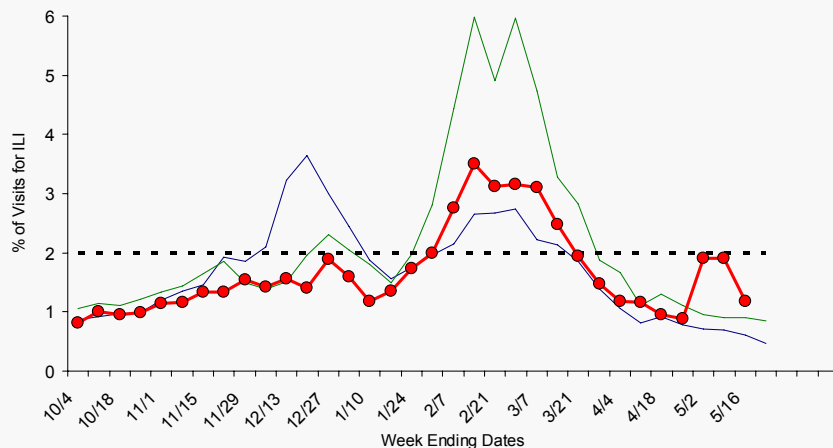


# Epidemiology/Surveillance

## Novel Influenza A (H1N1) - 21 May 2009 1100 EDT

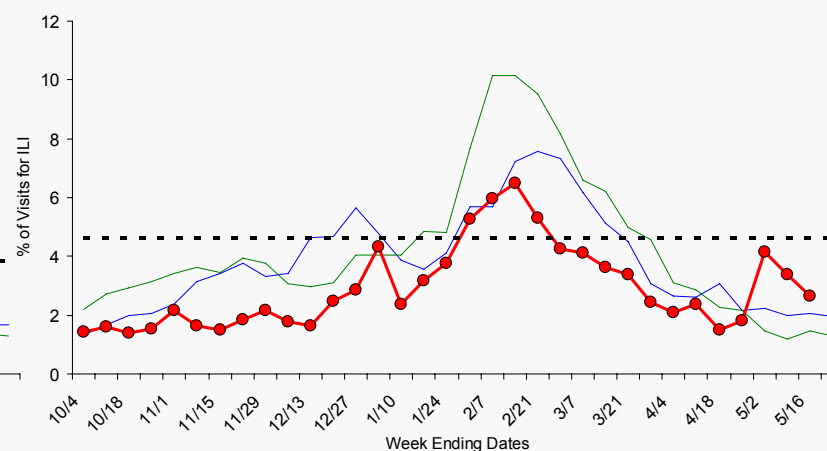
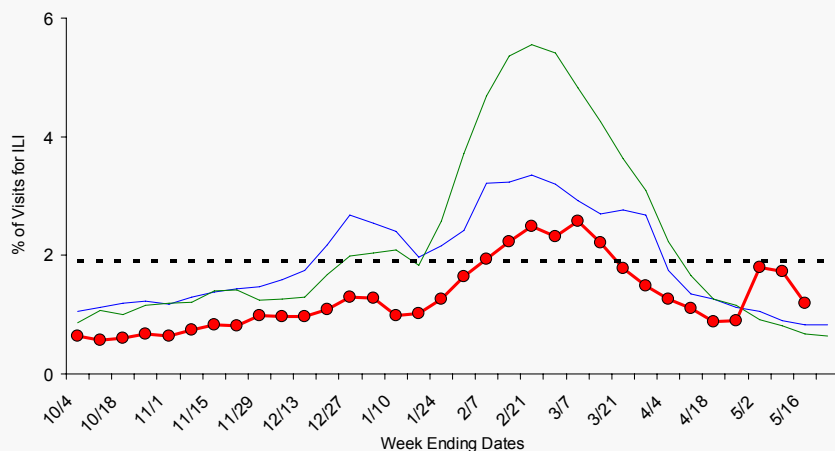
### Current Influenza Surveillance – ILINet Regions IV-VI

Region IV - AL, FL, GA, KY, MS, NC, SC, TN



Region V - IL, IN, MI, MN, OH, WI

Region VI - AR, LA, NM, OK, TX



NOTE: Scales differ between regions

NOTE: There was no week 53 during the 2006-07 and 2007-08 seasons, therefore the week 53 data point for those seasons is an average of weeks 52 and 1.

**Data are provisional and will not be officially released by the CDC until 1100 EDT**

**Internal Use Only (FIU)---For Official Use Only (FOU) NOT FOR FURTHER DISTRIBUTION -Sensitive But Unclassified (SBU)**



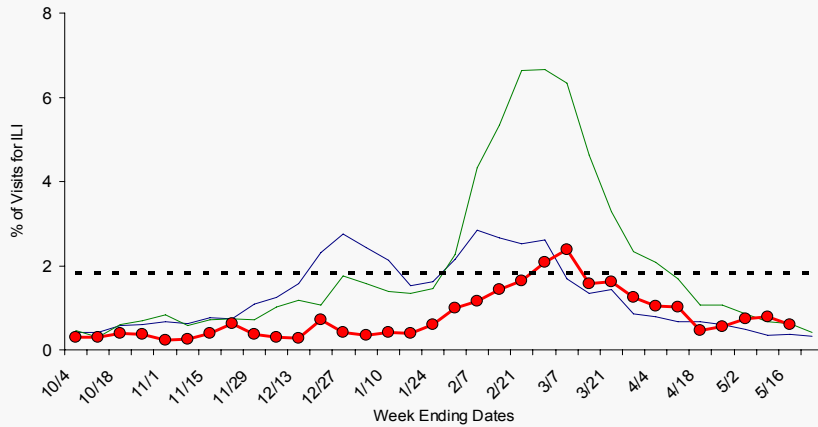
# Epidemiology/Surveillance

## Novel Influenza A (H1N1) - 21 May 2009 1100 EDT

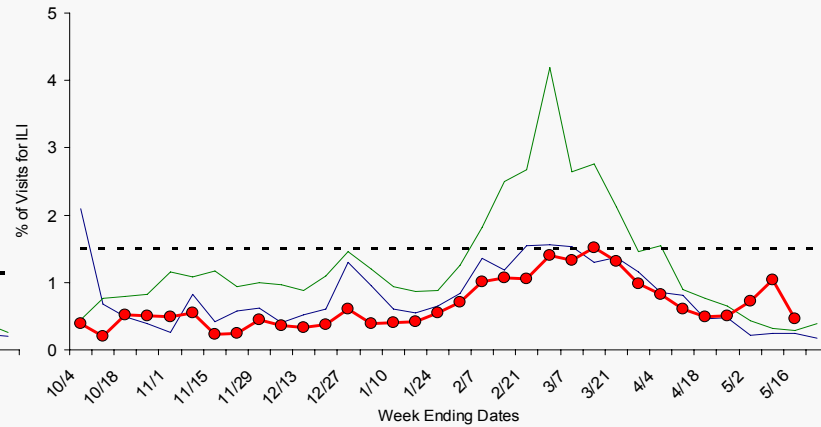
### Current Influenza Surveillance – ILINet Regions VII-X



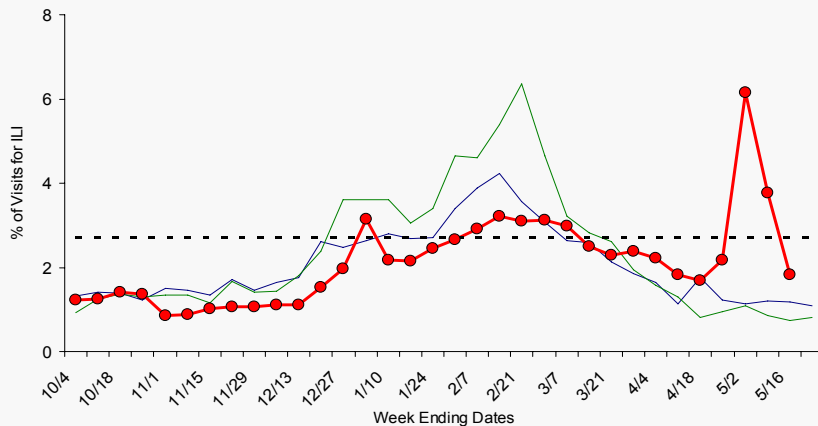
Region VII - IA, KS, MO, NE



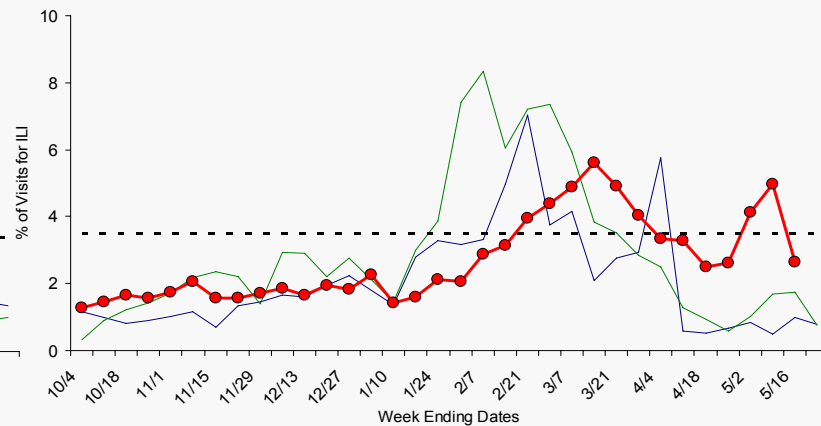
Region VIII - CO, MT, ND, SD, UT, WY



Region IX - AZ, CA, HI, NV



Region X - AK, ID, OR, WA



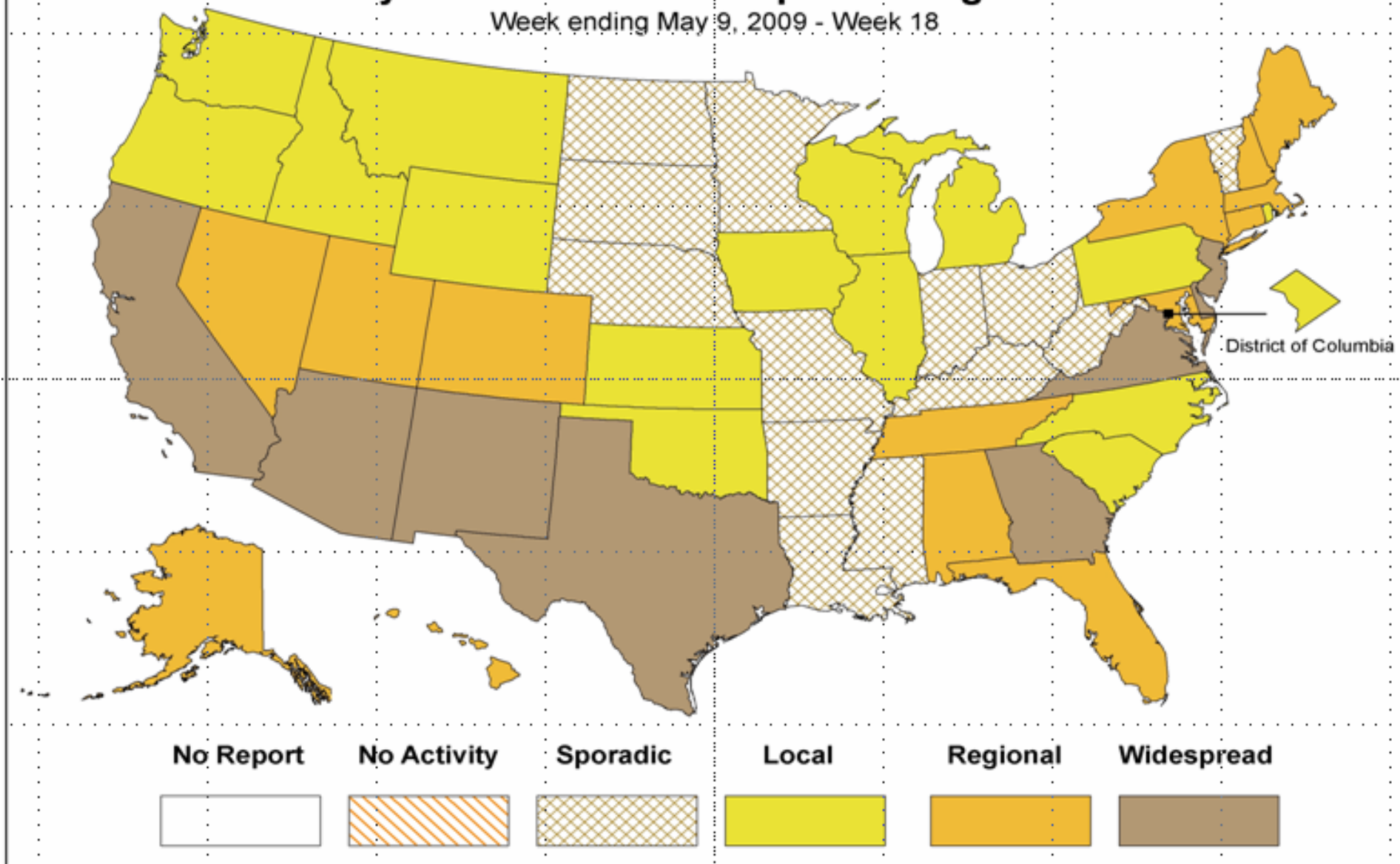
NOTE: Scales differ between regions

NOTE: There was no week 53 during the 2006-07 and 2007-08 seasons, therefore the week 53 data point for those seasons is an average of weeks 52 and 1.

**Data are provisional and will not be officially released by the CDC until 1100 EDT**  
**Internal Use Only (FIUO)---For Official Use Only (FOUO) NOT FOR FURTHER DISTRIBUTION -Sensitive But Unclassified (SBU)**

# Weekly Influenza Activity Estimates Reported by State & Territorial Epidemiologists\*

Week ending May 9, 2009 - Week 18

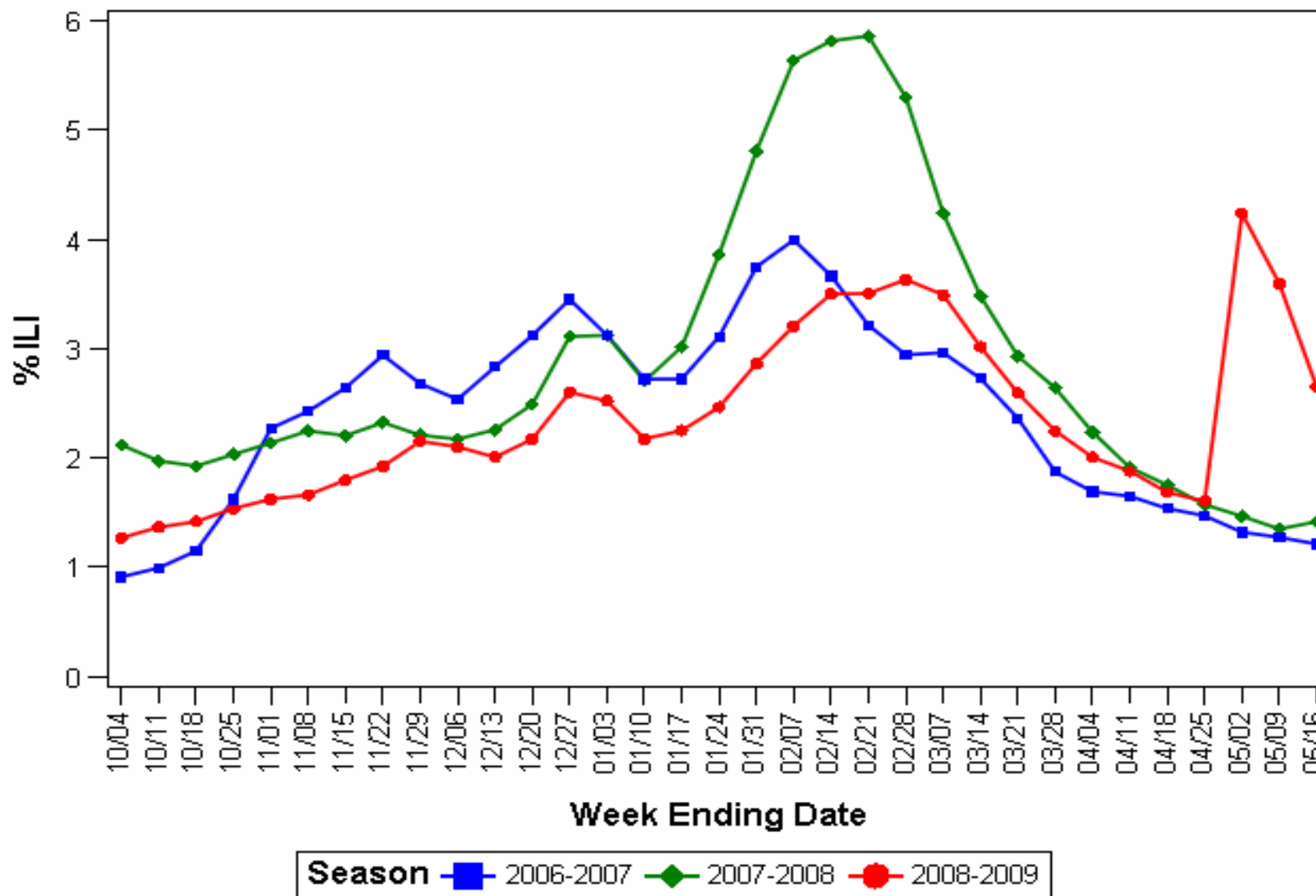


\* This map indicates geographic spread & does not measure the severity of influenza activity



# BioSense

## Percentage of Emergency Department Visits for Patient-reported ILI Weekly Trends, 10/07/2006 to 05/16/2009: U.S.



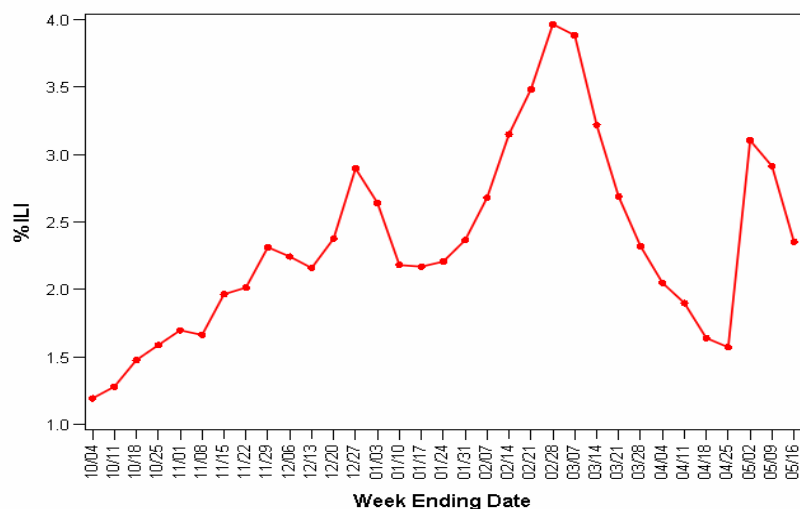


# BioSense

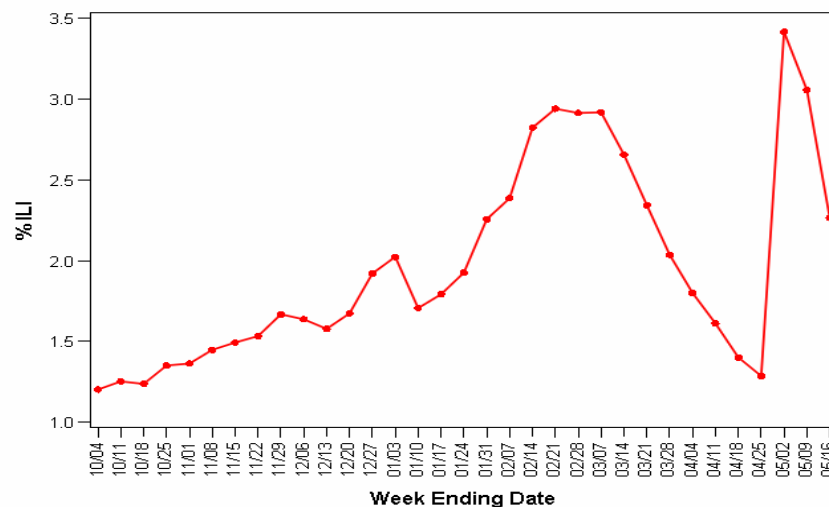
## Percentage of Emergency Department Visits for Patient-reported ILI, Weekly Trends by Federal Region, 10/07/2006 to 05/16/2009: U.S.



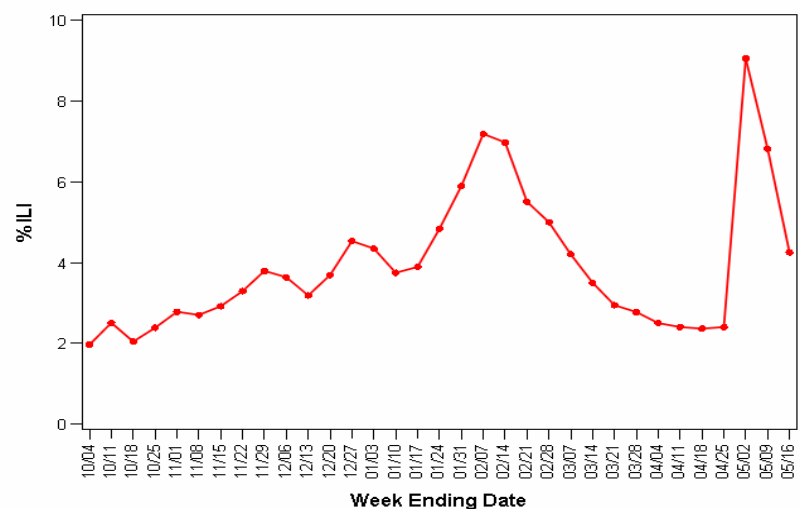
=Region IV - AL FL GA KY MS NC SC TN



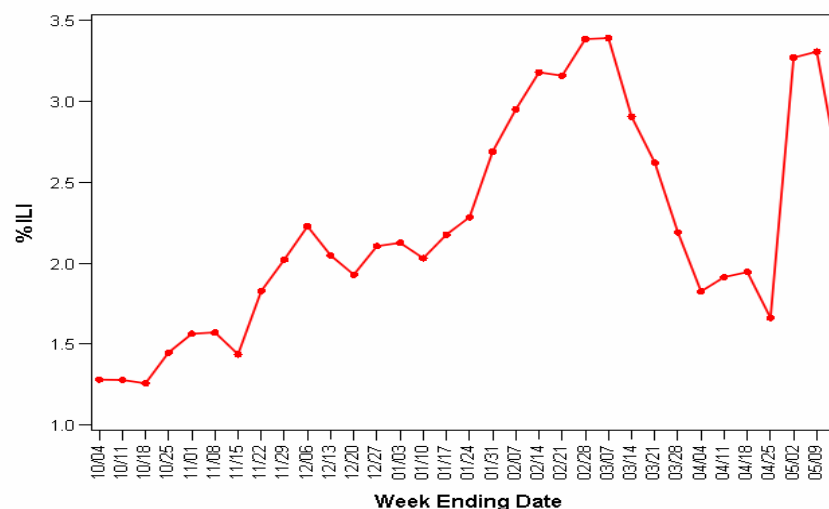
=Region V - IL IN MI MN OH WI



=Region VI - AR LA NM OK TX



=Region VII - IA KS MO NE





International  
Novel Influenza A (H1N1) - 21 May 2009 1100 EDT

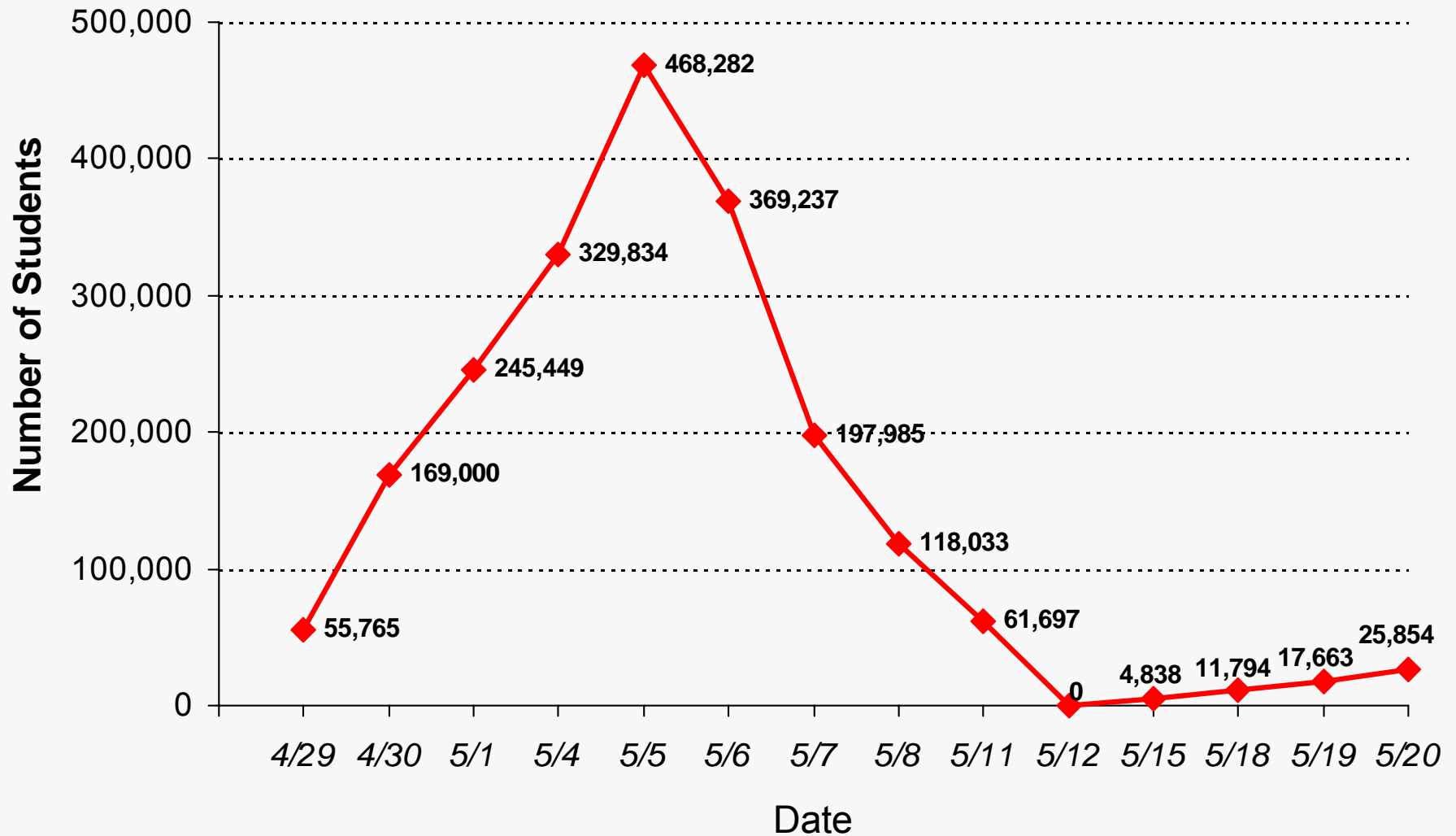


- WHO global case count: 11,034 confirmed cases in 41 countries\*
  - Countries with highest confirmed case count after the US and Mexico:
    - Canada: 719                      Japan: 259
    - Spain: 111                         UK: 109
- Increases in case counts expected in countries receiving CDC PCR kits as testing capabilities are improved

*\*Note: WHO case counts are current as of 05/20/09, 8:00 pm EDT*



Division of Global Migration and Quarantine  
Novel Influenza A (H1N1) - 20 May 2009 1100 EDT  
Students dismissed, United States, 4/29 – 5/20, 2009



Source: ED and CDC Confirmed School Closing Reports released each weekday at 2:00pm.



## Communications Summary Novel Influenza A (H1N1) - 21 May 2009 1100 EDT



Channel Traffic	5/16-17 Sa-Sun	5/17-18 Sun-Mon	5/18-19 Mon-Tue	5/19-20 Tue-Wed
Clinician Inquiry Calls	7	2	34	41 (+21%)
Local TV News	273	912	611	737 (+20%)
Web	512,254	547,371	1,216,785	1,044,297 (-14%)

### National Themes

- H1N1 “attacks” young people more frequently; children w/chronic conditions
- UT and AZ report H1N1 deaths
- 26 NYC schools closed ~more expected;
- ERs crowded flu-like symptoms
- NYC television
  - City gov. actions/response – efforts to calm fears
  - Individuals having difficulty assessing symptoms – confusing messages