

This is a version of https://www.cascom.army.mil/private/CDI/FDD/Multi/FSI/Capabilities_Book_Ver_1.5133.pdf as it looked when our crawler examined the site on 6/8/2008. The page you see below is the version in our index that was used to rank this page in the results to your recent query. This is not necessarily the most recent version of the page - to see the most recent version of this page, [visit the page on the web](#).

*Live.com is not affiliated
with the content nor
parties responsible for the
page displayed below.*

Modular Logistics Capabilities Book No Slide Title

FOR OFFICIAL USE ONLY (FOUO)

--Version 1.5133 --

Modular Logistics Capabilities Book

Combined Arms Support Command Fort Lee, Virginia

--Version 1.5133--
FOR OFFICIAL USE ONLY (FOUO)

FOR OFFICIAL USE ONLY (FOUO)

Preface

The Modular Logistics Capabilities Book is designed to depict the structure and identify the capabilities of CSS units in the modular army,

and to allow the reader to become more familiar with how the logistics community will look in 2011. The first two chapters depict the imbedded CSS structure and capabilities in the Brigade Combat Teams and Support Brigades, respectively. Chapter 3 identifies the Functional CSS battalions. Chapter 4 depicts the Sustainment Brigade as well as the functional CSS Groups that remain. Chapter 5 will cover the Theater Sustainment Command and Deployment Command Post. Chapter 7 will identify every TC, QM, and OD unit from team to company and depict its organization, mission, capability, and assignment. This book is designed to be updated as required. Please send any comments, questions, or improvements to david.w.hargrave@lee.army.mil.

FOR OFFICIAL USE ONLY (FOUO)

FOR OFFICIAL USE ONLY (FOUO)

SENSITIVE INFORMATION -FOR OFFICIAL USE ONLY.

The information contained in this document may contain sensitive and pre-decisional Department of the Army information and protected from mandatory disclosure under the Freedom of Information Act (FOIA), 5 USC 552. Do not forward outside of the Department of the Army Staff/Army Secretariat/or Army MACOM channels without the expressed permission of the originator. If you are not the intended recipient of this information, any disclosure copying, distribution, or the taking of any action on this information is prohibited.

FOR OFFICIAL USE ONLY (FOUO)

FOR OFFICIAL USE ONLY (FOUO)
Modular Logistics Capabilities Book

Preface.....	i
Table of Contents.....	ii
Chapter 1 Logistics Support in BCTs.....	1-1
Heavy BCT.....	1-2
Infantry BCT.....	1-11
Stryker BCT.....	1-20

Airborne BCT..... 1-26

Chapter 2 Logistics Support in SUAs.....2-1

Fires BDE..... 2-2

Aviation BDE..... 2-11

ME BDE

WORKING

BFSB

Chapter 3 CSS Battalions3-1*

CSSBs (Placeholder)..... 3-2 *

Tactical

Operational

Motor Transportation BN (55716F000) 3-3 *

Movement Control BNs (55606F000) 3-4 *

Transportation Terminal BN (55816F000) 3-5 *

Transportation Railway BNs (55916L000) 3-6 *

POL Pipeline & Terminal BNs (10416L000) 3-7 *

POL Supply BN (10426L000) 3-8 *

Ammo BNs (09666L000) 3-9 *

EOD BNs (09466A000) 3-10 *

* added for version 1.5133

FOR OFFICIAL USE ONLY (FOUO)

FOR OFFICIAL USE ONLY (FOUO) Modular Logistics Capabilities Book

Chapter 4 Sustainment BDE

Theater Opening Element
Theater Distribution Plug
Petroleum Group
EOD Group

WORKING

Chapter 5 TSCs and DCPs

Chapter 6 CSS Unit Capabilities by SRC.....	6-1
TC Units	6-2
Movement Control Team (55506GA00)	6-3 *
Logistics Support Vessel (55530LJ00)	6-4
Trailer Transfer Point (55540FE00)	6-5 *
Terminal Supervision Team (55560FC00)	6-6 *
Port Management Team (55560FG00)	6-7 *
Automated Cargo Doc Team (55560LD00)	6-8 *
Harbormaster Detachment (55587FA00)	6-9 *
Trans Medium Boat Detachment (55588FA00)	6-10 *
Trans Maint Watercraft Company (55613L000)	6-11
Trans Light/Medium Truck Co (55719F000)	6-12

Trans Co Medium Truck Cargo (55727F100)6-13
Trans Co POL Truck 7.5K (55727F200)6-14
Trans Co POL Truck 5K (55727F300)6-15
Trans PLS Company (55728F300)6-16
Combat HET Company (55739I100)6-17
Inland Cargo Transfer Company (55819F000)6-18
Trans Heavy Watercraft Company (55829L000)6-19
Seaport Operations Company (55838F000)6-20
Modular Causeway Company (55848F000)6-21

* added for version 1.5133

iii

FOR OFFICIAL USE ONLY (FOUO)

FOR OFFICIAL USE ONLY (FOUO)

Modular Logistics Capabilities Book

Floating Craft Company (55889F000)6-22
Theater Support Vessel Det (55888F000)6-23 *
Trans Railway Operating Co (55917L000)6-24
OD Units6-25
HQs Mod Ammo Co (09408L000)6-26
Ammo Medium Lift Platoon (09503LA00)6-27 *
Ammo Heavy Lift Platoon (09503LB00)6-28 *
Ordnance Company (EOD) (09447A000)6-29
Ordnance Co (Ammo) (WHNS) (09574LB00)6-30

Ordnance EOD Co (CONUS)	(43747F000)	6-31
Collection & Classification Co	(43747F000)	6-31
Area TMDE Team	(43547AH00)	6-33 *
Support Maint Company	(43573FA00)	6-34
Auto/Armt Maint Platoon	(43573FB00)	6-35 *
Track Vehicle Maint Module	(43573FC00)	6-36 *
Wheeled Vehicle Maint Module	(43573FD00)	6-37 *
Ground Spt Equip Maint Platoon	(43573FG00)	6-38 *
Ground Spt Equip Maint Module	(43573FH00)	6-39 *
Electronic Equip Maint Platoon	(43573FI00)	6-40 *
COMMEL Maint Module	(43573FJ00)	6-41 *
Spec Elect Dev Maint Module	(43573FK00)	6-42 *
Radar/GBS Maint Module	(43573FL00)	6-43 *
Missile Maint Platoon HQs	(43573FM00)	6-44 *
LCMS Maint Team	(43573FN00)	6-45 *
MLRS Maint Team	(43573FO00)	6-46 *
ADA Maint Team	(43573FP00)	6-47 *
Track Vehicle Recovery Team	(43573FQ00)	6-48 *
Component Repair Company	(43583FA00)	6-49
Automotive Repair Platoon, CRC	(43583FB00)	6-50 *

* added for version 1.5133

FOR OFFICIAL USE ONLY (FOUO)

Modular Logistics Capabilities Book

Ground Spt Equip Platoon, CRC	(43583FC00)6-51	*
Armament Repair Platoon, CRC	(43583FD00)6-52	*
Electronic Repair Platoon, CRC	(43583FE00)6-53	*
Automotive Elect Repair Tm, CRC	(43583FF00)6-54	*
Component Repair Plt HQs, CRC	(43583FG00)6-55	*
DSESTS/LRU Repair Team	(43583FH00)6-56	*
Laser Designator Support Team	(43583FI00)6-57	*
Night Sight Support Team	(43583FJ00)6-58	*
BSTF Support Team	(43583FK00)6-59	*
Air Traffic Control Spt Maint Co	(43613A000)6-60	
Ord (Maint) Co, TNC-Army	(43648A000)6-61	
Maint Platoon, TNC-A	(43568AA00)6-62	*
QM Units	6-63	
QM Field Service Company	(10414L000)6-64	
QM POL Pipeline & Term Op Co	(10417L000)6-65	
HQs, QM POL Support Co	(10527FA00)6-66	
SPO, QM POL Support Co	(10527FB00)6-67	
QM POL Support Platoon (50K)	(10527FC00)6-68	*
QM POL Support Platoon (210K)	(10527FD00)6-69	*
QM Equip & Maint Support Plt	(10527FE00)6-70	*
QM Assault Hose Line Aug Team	(10527FF00)6-71	*
Aerial Delivery Support Company	(10537GA00)6-72	

Aerial Delivery Office	(10537GB00)	6-73 *
Aerial Delivery Support Platoon	(105273C00)	6-74
HQs, QM Collection Co (MA)	(10548FA00)	6-75
SPO, QM Collection C0 (MA)	(10548FB00)	6-76 *
Fwd Collection Platoon	(10548FC00)	6-77 *
Main Collection Platoon	(10548FD00)	6-78 *
POL Quality Analysis Team	(10560GA00)	6-79 *

* added for version 1.5133

v

FOR OFFICIAL USE ONLY (FOUO)

FOR OFFICIAL USE ONLY (FOUO)

Modular Logistics Capabilities Book

POL Liaison Team	(10560LM00)	6-80 *
QM AOAP Mobile Lab Team	(10560LR00)	6-81 *
HQs, QM Water Purif & Distr Co	(10567FA00)	6-82
SPO, QM Water Purif & Distr Co	(10567FB00)	6-83 *
QM Water Purification Platoon	(10567FC00)	6-84 *
QM Water Stor & Distr Platoon	(10567FD00)	6-85 *
HQs, Aug Water Company	(10567FE00)	6-86 *
SPO, Aug Water Company	(10567FF00)	6-87 *
Aug Water Purification Platoon	(10567FG00)	6-88 *

Aug Water Storage Platoon	(10567EH00)	6-89 *
HQs, QM Mortuary Affairs Co	(10568FA00)	6-90
SPO, QM Mortuary Affairs Co	(10568FB00)	6-91
Personal Effects Platoon	(10568FC00)	6-92 *
Evacuation/Mortuary Platoon	(10568FD00)	6-93 *
Collection Platoon	(10568FE00)	6-94 *
Tactical Water Distr Team	(10570LG00)	6-95 *
QM Heavy Airdrop Supply Co	(10643L000)	6-96
QM Airdrop Equip Rep & Sup Co	(10649L000)	6-97
Heavy Materiel Supply Company	(42427L100)	6-98
Map Distribution Platoon	(42518L000)	6-99 *
Aviation Repair Parts Supply Plt	(42519LA00)	6-100 *
HQs, Force Provider Company	(42524LA00)	6-101
SPO, Force Provider Company	(42524LB00)	6-102
Force Provider Platoon	(42524LC00)	6-103 *
HQs, QM Support Company	(42529FA00)	6-104
SPO, QM Support Company	(42529FB00)	6-105
Subsistence Platoon	(42529FC00)	6-106 *
Area Support Platoon	(42529FD00)	6-107 *
MHE Augmentation Team	(42529FE00)	6-108 *

* added for version 1.5133

vi

FOR OFFICIAL USE ONLY (FOUO)

FOR OFFICIAL USE ONLY (FOUO)

Chapter 1

Logistics Support in BCTs

FOR OFFICIAL USE ONLY (FOUO)

FOR OFFICIAL USE ONLY (FOUO)

Heavy BCT

FOR OFFICIAL USE ONLY (FOUO)

FOR OFFICIAL USE ONLY (FOUO)

Heavy BCT

x

BDE

SPT
(BSB)

BTB

RSTA

MAN
BN

HHC

DIST
CO

FLD
MNT
CO

MED
CO

FSC

FSC

FSC

HQ
PLT

DISTR
PLT

MT
PLT

HQ
PLT

DISTR
PLT

MT
PLT

HQ
PLT

DISTR
PLT

MT
PLT

Distro Company, BSB
Transportation Platoon
4 Squad Leaders
 40 Operators (4x Truck Sqds)
 20 x HEMTT-LHS
 20 x PLS Trailer

FSC (Armed Recon Sqdrn)
General Supply Section
 10 Operators
 2 x FMTV / 3 x HEMTT-LHS
Class V Section
 10 Operators
 2 x FMTV / 3 x PLS w/ TRL

FSC (Maneuver BN)
General Supply Section
 14 Operators
 2 x FMTV / 5 x HEMTT-LHS
Class V Section
 14 Operators
 2 x FMTV / 5 x PLS w/ TRL

FSC (Field Arty BN)
General Supply Section
 8 Operators
 2 x FMTV / 2 x HEMTT-LHS
Class V Section
 20 Operators
 2 x FMTV / 8 x PLS w/ TRL

FOR OFFICIAL USE ONLY (FOUO)

FOR OFFICIAL USE ONLY (FOUO)
HHC, BSB, Heavy BCT

SRC: 63326G100

O W E Total

17 3 61 81

BSB

HHC

DISTRO

FLD
MAINT

MED

Bn
HQs

CO
HQs

Cmd
Sec

UMT

S6

Spt
Ops

S1

S2/3

S4

MISSION: This unit provides command and control for all organic and attached units of the Brigade Support Battalion (BSB).

CAPABILITIES:

- (a) Command and control, personnel accounting/strength reporting and causality reporting for units organic or assigned to the BSB.
- (b) The planning, direction, and supervision of CSS for all assigned and attached units in the Armor UA.
- (c) Movement management for internal and external transportation assets operating in the brigade area.
- (d) The planning, direction, and supervision of administration and logistics for units organic or assigned to the battalion.
- (e) Limited unit-level administration and religious services for units of the battalion.
- (f) The planning and direction of rear operations and limited area security as assigned by the supported brigade commander.
- (g) Information and advice to the supported brigade commander and staff on support capabilities provided by the battalion.
- (h) Provide MRE's during deployment and up to one hot meal per day for the HHC Brigade, Brigade Troops Battalion (BTB), and the Brigade Support Battalion (BSB) during initial operations (3 days). Augmentation will be required to provide food service support for attached units.
- (i) The planning and execution of unit-level mortuary affairs training.

FOR OFFICIAL USE ONLY (FOUO)

FOR OFFICIAL USE ONLY (FOUO)
Distribution Company, BSB, Heavy BCT

O W E Total

SRC: 63328G200

DIST CO

CO HQs	Trans Plt		Supply Plt			Fuel/ Water Plt			
	Trans Plt HQ	Truck Squad	x4	Supply Plt HQ	Gen Sup Sec	Trans Plt HQ	Fuel/ Water Plt HQ	Class III Sec	Water Sec
					Truck Sqd	x4			

MISSION: To provide transportation and supply support to the Heavy BCT.

CAPABILITIES:

- (a) Planning, direction, and supervision of supply distribution and transportation support to the BCT.
- (b) Daily receipt, temporarily storage, and issuance of all classes of supply (less Class VIII) to the BCT.
- (c) At level 1, with 100% vehicle availability, this unit provides a one-time lift capability of:

Dry Cargo 256 Warehouse Pallets or
 64 Air Force 463L pallets or
 113 STONS General Cargo-less class V
 AND
 Containers: 4
 OR
 AMMO 204 STONS Class V
 AND
 Containers: 4

(d) Class II (B) fuel support to the BCT of up to 60,500 gallons per day using HEMMT Tankers and the Lightweight Modular Fuel Pann. Drivers CL in (B) to the FSCs with the BSB. Maintains one load to the BCT.

(e) Water purification; operates one water point and purifies 30k gallons of potable water per day from fresh water and 24,000 gallons per day when using salt or brackish water. Stores and distributes 32K gallons to 3 FSCs simultaneously. LWP operations produce 2500 gallons per day at 2 remote locations providing supply support distribution in support of isolated units, as required.

FOR OFFICIAL USE ONLY (FOUO)

FOR OFFICIAL USE ONLY (FOUO)

Field Maintenance Company, BSB, Heavy BCT

SRC: 43327G100

O	W	E	Total
4	3	70	77

FIELD
MT CO

CO
HQ

MT
Control

Area
Spt Plt

Base
Spt Plt

Plt
HQ

Rec
Sec

Mech
MT Sec

Plt
HQ

Elec/
MSL Sec

GSE
Sec

Armt
Sec

MISSION: Provide Field Level Maintenance support to a Brigade Unit of Action.

CAPABILITIES:

- (a) Provide recovery, Auto/Armt, Ground Spt and Electronic maintenance and maintenance management to Brigade and Brigade Base Elements (HQ, BSB, BTB).
- (b) Provide maintenance advice and support to the brigade.
- (c) Serve as the central entry and exit point to the BDE for low density equipment.
- (d) Base Support Platoon performs consolidated maintenance on selected (low density) equipment support to the Brigade.
- (e) Area Support Platoon performs direct support to the Brigade Base Elements (Mech MNT automotive and Track). Maximizes the use of Combat spares. Provides ULLS-G/SAMS-1 support to BTB and BSB companies.

FOR OFFICIAL USE ONLY (FOUO)

FOR OFFICIAL USE ONLY (FOUO)

Medical Company, BSB, HEAVY BCT

SRC: 08329G000

	O	W	E	Total
--	---	---	---	-------

CO				
HQS				

15	0	62	77
----	---	----	----

Prev Med	Mental Health	Med Trtmnt Plt	Evac Plt	Med Sup
	Area Spt Sqd	Med Trtmnt Sqd x2	Patient Holding Squad	Evac Sqd x5

MISSION: To provide brigade-level Combat Health Support (CHS) to organizations subordinate to the brigade, and to non-brigade organizations operating in the brigade area. This support includes the employment/coordination of corps level Combat Health Support (CHS) assets attached to the Brigade Combat Team (BCT) for operations.

CAPABILITIES:

(a) Command and Control of attached medical units to include combat health support planning, policies, and support operations as well as coordination of patient movement within and outside of the brigade area to include allied personnel, and Enemy Prisoners of War (EPW).

(b) Current information concerning the medical aspects of the CHS situation to higher command elements.

(c) Development, preparation, and coordination with the Brigade Surgeon Section (BSS) on the medical portion of the brigade plans and policies.

(d) Allocation of medical resources (personnel and equipment) to ensure adequacy of medical treatment to all units operating in the BCT's AO.

(e) The capability of performing triage, initial resuscitation/stabilization, and preparation for further evacuation of wounded and Disease and Nonbattle Injury (DNBI) casualties generated in the brigade support area, and unit-level CHS, on an area basis, for all elements without organic medical capability operating in the brigade rear.

(f) Evacuation of casualties within the brigade are to treatment facilities by ground ambulances. Plan, prepare, and execute aero medical evacuation operations when augmented with corps Forward Support MEDEVAC Team (FSMT).

(g) Treatment teams that are capable of operating independently, for limited periods of time, to provide support for forces involved in combat operations or to perform reconstitution/reinforcement operations, as appropriate.

(h) Dental services to include: emergency dental care focused on stabilization of maxillofacial injuries and other dental emergencies; essential dental care designed to prevent or intercept potential dental emergencies; and limited preventive dentistry.

(i). Optometry services to include: emergency and essential optometry care.

(j) Laboratory and radiology services commensurate with the brigade level of supporting essential medical care and treatment to include: basic hematology, chemistry, parasitology, urinalysis testing, and plane/regional films with digital radiological processing capability.

(k) Patient holding capability to include: nursing care for up to 20 patients.

FOR OFFICIAL USE ONLY (FOUO)

FOR OFFICIAL USE ONLY (FOUO)

FSC, ARS, BSB, Heavy BCT

SRC: 63327G000

O W E Total

5 1 137 143

FSC, ARS
Hvy BCT

HQS

FIELD
FEEDING

DISTRO
PLT

MAINT
PLT

WTR
III (B)

GEN
SUPPLY

CL V
SEC

Maint
Control

Maint
SEC

Service/
Recovery

CO LVL
FMTs

MISSION: To provide direct and habitual combat service support to itself and the Armed Recon Squadron, TOE 17205G000.

CAPABILITIES:

- (a) Planning, direction, and supervision of supply distribution points, and field service support.
- (b) Daily receipt, storage, and issue of all classes of supply (less Class VIII) to the Armed Recon Squadron
- (c) At level 1, with 100% vehicle availability, this unit provides a one-time lift capability of:

DRY Cargo:	54 Warehouse Pallets or 11 Air Force 463L pallets or 28 STONS General Cargo-Class V
	AND
AMMO	60 Warehouse Pallets or 14 Air Force 463L pallets or 50 STONS Class V

- (d) Receives, stores, issues, and distributes up to 8,550 gallons of bulk petroleum daily using HEMTT POL tankers and a Tank and Pump unit.
- (e) Water storage and distribution for the Armed Recon Squadron up to 4,000 gallons per day.
- (f) Food service support for the Armed Recon Squadron and organic personnel.

FOR OFFICIAL USE ONLY (FOUO)

FOR OFFICIAL USE ONLY (FOUO)

FSC, MNVR, BSB, Heavy BCT

SRC: 63327G100

O W E Total

FSC, MNVR
Hvy BCT

5 1 224 230

HQS	FIELD FEEDING	DISTRO PLT		MAINT PLT		
	WTR III (B)	GEN SUPPLY	CL V SEC			
			Maint Control	Maint SEC	Service/ Recovery	CO LVL FMTs

MISSION : To provide direct and habitual combat service support to itself and the maneuver battalion, TOE 07205G000.

CAPABILITIES:

- (a) Planning, direction, and supervision of supply distribution points, and field service support.
- (b) Daily receipt, storage, and issue of all classes of supply (less Class VIII) to the maneuver battalion.
- (c) At level 1, with 100% vehicle availability, this unit provides a one-time lift capability of:

DRY Cargo:	52 Warehouse Pallets or 12 Air Force 463L pallets or 25 STONS General Cargo-Class V AND
AMMO	104 Warehouse Pallets or 24 Air Force 463L pallets or 57 STONS Class V

- (d) Receives, stores, issues, and distributes up to 29,250 gallons of bulk petroleum daily using HEMTT POL tankers and a Tank and Pump unit.
- (e) Water storage and distribution for the battalion up to 4,000 gallons per day.
- (f) Food service support for the maneuver battalion and organic personnel.

FOR OFFICIAL USE ONLY (FOUO)

FOR OFFICIAL USE ONLY (FOUO)

FSC, FA Bn, BSB, Heavy BCT

SRC: 63327G200

O W E Total

5 1 131 137

FSC, MNVR
Hvy BCT

HQS

FIELD
FEEDING

DISTRO
PLT

MAINT
PLT

WTR
III (B)

GEN
SUPPLY

CL V
SEC

Maint
Control

Maint
SEC

Service/
Recovery

CO LVL
FMTs

MISSION: To provide direct and habitual combat service support to itself and the field artillery battalion, TOE 06385G000.

CAPABILITIES:

- (a) Planning, direction, and supervision of supply distribution points, and field service support.
- (b) Daily receipt, storage, and issue of all classes of supply (less Class VIII) to the field artillery battalion.
- (c) At level 1, with 100% vehicle availability, this unit provides a one-time lift capability of:

DRY Cargo: 28 Warehouse Pallets or
 6 Air Force 463L pallets or
 14 STONS General Cargo-less Class V
 AND

AMMO 152 Warehouse Pallets or
 36 Air Force 463L pallets or
 126 STONS Class V

- (d) Receives, stores, issues, and distributes up to 108,500 gallons of bulk petroleum daily using HEMTT POL tankers and a Tank and Pump unit.
- (e) Water storage and distribution for the battalion up to 4,000 gallons per day.
- (f) Food service support for the field artillery battalion and organic personnel.

FOR OFFICIAL USE ONLY (FOUO)

FOR OFFICIAL USE ONLY (FOUO)

Infantry BCT

FOR OFFICIAL USE ONLY (FOUO)

FOR OFFICIAL USE ONLY (FOUO)

Infantry BCT

X

BD
E

SPT
(BSB)

BTB

RSTA

MAN
BN

HHC

DISTRO
CO

FLD MNT
CO

MED
CO

FSC

FSC
FSC

FSC

HQ

DIS

HQ

HQ

DIS

MAIN
T

HQ

DIS

HQ

PLT

PLT PLT

PLT

Distro Company, BSB

FSC (Armed Recon Sqdrn)

FSC (Maneuver BN)

FSC (Field Arty BN)

Transportation Platoon
 40 Operators (4x Truck Sqds)
 20 x HEMTT-LHS w/ PLS TRL
 Mobility Section
 48 Operators (Mob Section)
 24 x LMTV

General Supply Section
 8 Operators
 4 x FMTV
Class V Section
 8 Operators
 4 x FMTV

General Supply Section
 10 Operators / 5 x LMTV
Class V Section
 10 Operators / 5 x FMTV
 Trans Section
 24 Operators / 12 x LMTV

General Supply Section
 8 Operators
 4 x FMTV
Class V Section
 8 Operators
 2 x FMTV

FOR OFFICIAL USE ONLY (FOUO)

FOR OFFICIAL USE ONLY (FOUO)
HHC, BSB, INF UA

SRC: 63336G300

O	WE		Total
19	2	57	78

BSB

HHC

Dist

Fld Mt
Co

Med
Co

HQs

HQs

Cmd
Sec

S2/3

Spt
Opns

S-4

S-1

S-6

S-4

UMT

MISSION. This unit provides command and control for all organic and attached units of the Brigade Support Battalion (BSB).

CAPABILITIES:

- (a) Command and control, personnel accounting/strength reporting and causality reporting for units organic or assigned to the BSB.
- (b) The planning, direction, and supervision of CSS for all assigned and attached units in the Infantry Unit of Action.
- (c) Movement management for internal and external transportation assets operating in the brigade area.
- (d) The planning, direction, and supervision of administration and logistics for units organic or assigned to the battalion.
- (e) Limited unit-level administration and religious services for units of the battalion.
- (f) The planning and direction of rear operations and limited area security as assigned by the supported brigade commander.
- (g) Information and advice to the supported brigade commander and staff on support capabilities provided by the battalion.
- (h) Provide MRE's during deployment and up to one hot meal per day for the Headquarters Infantry Brigade, Brigade special Troops Battalion (BTB), and the Brigade Support Battalion (BSB) (less the four Forward Support Companies), during initial operations (3 days). Augmentation will be required to provide food service support for attached units.
- (i) The planning and execution of unit-level mortuary affairs training.

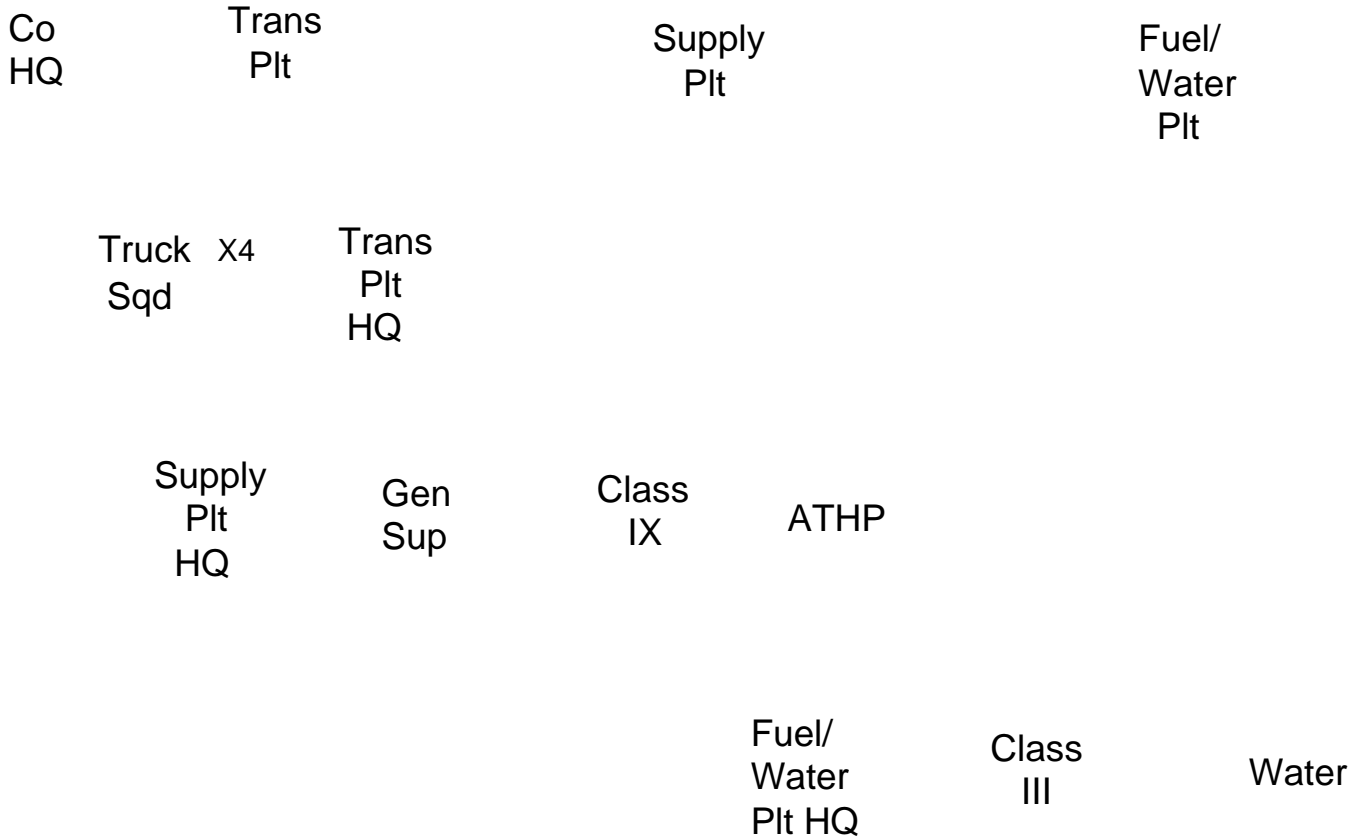
FOR OFFICIAL USE ONLY (FOUO)

1-3

FOR OFFICIAL USE ONLY (FOUO)

DIST CO, BSB, INF UA

SRC: 63338G000	Dist Co	O	WE	Total
		62	205	213



MISSION: To provide direct and habitual combat service support to itself and the infantry battalion, TOE 07415G000.

CAPABILITIES:

- (a) Planning, direction, and supervision of supply distribution points, and field service support.
- (b) Daily receipt, storage, and issue of all classes of supply (less Class VIII) to the infantry battalion.
- (c) At level 1, with 100% vehicle availability, this unit provides a one-time lift capability of:

DRY Cargo: 150 Warehouse Pallets or
 25 Air Force 463L pallets or
 89 STONS General Cargo-less Class V

AND

AMMO 60 Warehouse Pallets or
 10 Air Force 463L pallets or
 64 STONS Class V

- (d) Receives, stores, issues, and distributes up to 4,600 gallons of bulk petroleum daily using HEMTT POL tankers.
- (e) Water storage and distribution for the battalion up to 4,000 gallons per day.
- (f) Food service support for the field artillery battalion and organic personnel.

FOR OFFICIAL USE ONLY (FOUO)

FIELD MAINT CO, BSB, INF UA

SRC: 43337G000	O	WE		Total
Maint Co	4	6	71	81

Troop HQ	Area Spt Plt	Base Spt Plt
-------------	--------------------	--------------------

Troop HQ Sec	Maint Ctrl
--------------------	---------------

Area
Spt Plt
HQ

C&E/
MLS

Rec
Sec

Whl
Cont

Base
Spt
Plt HQ

Auto
Rpt

Grnd
Spt
EQ

Arm
Rpr

MISSION: To provide Field Level Maintenance support to a Infantry Unit of Action Battalion.

CAPABILITIES:

- (a) The following annual man-hour/man-years of productive DS maintenance based on availability criteria of 3230 man-hours per repairer:

MOS TITLE MHRS/MYRS

45B Small Arms /Arty Repairer 12,920 / 4
 45K Armament Repairer 6,460 / 2
 52C Utility Equip Repairer 19,380 / 6
 52D Power Generation Repairer 54,910 / 17
 62B Const Equip Repairer 9,690 / 3
 63B Wheel Vehicle Repairer 235,790 / 73
 63J Quartermaster /Chem Rep 19,380 / 6
 94E Radio COMSEC Repairer 25,840 / 8
 94F Special Elec Device Rep 29,070 / 9

- (b) Direct support service and recovery, to Auto/Armt, in addition to limited ground support and electronic maintenance to the Brigade Base Elements.
 (c) Back-up service and recovery, Auto/Armt, in addition to ground support and electronic maintenance to the Battalion FSCs.
 (d) Technical assistance to supported units with organic unit maintenance elements.

FOR OFFICIAL USE ONLY (FOUO)

FOR OFFICIAL USE ONLY (FOUO)

Medical Company, BSB, Infantry BCT

SRC: 08339G000

O W E Total

CO
HQS

15 0 56 71

Prev
MedMental
HealthMed
Trtmnt
PltEvac
PltMed
SupArea
Spt SqdMed
Trmt
SqX2 Patient
Holding
SquadEvac
Sqd x5

MISSION: To provide brigade-level Combat Health Support (CHS) to organizations subordinate to the brigade, and to non-brigade organizations operating in the brigade area. This support includes the employment/coordination of corps level Combat Health Support (CHS) assets attached to the BrigadeCombat Team (BCT) for operations.

CAPABILITIES:

(a) Command and Control of attached medical units to include combat health support planning, policies, and support operations as well as coordination of patient movement within and outside of the brigade area to include allied personnel, and Enemy Prisoners of War (EPW).

(b) Current information concerning the medical aspects of the CHS situation to higher command elements.

(c) Development, preparation, and coordination with the Brigade Surgeon Section (BSS) on the medical portion of the brigade plans and policies.

(d) Allocation of medical resources (personnel and equipment) to ensure adequacy of medical treatment to all units operating in the BCT's AO.

(e) The capability of performing triage, initial resuscitation/stabilization, and preparation for further evacuation of wounded and Disease and Nonbattle Injury (DNBI) casualties generated in the brigade support area, and unit-level CHS, on an area basis, for all elements without organic medical capability operating in the brigade rear.

(f) Evacuation of casualties within the brigade are to treatment facilities by ground ambulances. Plan, prepare, and

execute aero medical evacuation operations when augmented with corps Forward Support MEDEVAC Team (FSMT).

(g) Treatment teams that are capable of operating independently, for limited periods of time, to provide support for forces involved in combat operations or to perform reconstitution/reinforcement operations, as appropriate.

(h) Dental services to include: emergency dental care focused on stabilization of maxillofacial injuries and other dental emergencies; essential dental care designed to prevent or intercept potential dental emergencies; and limited preventive dentistry.

(i). Optometry services to include: emergency and essential optometry care.

(j) Laboratory and radiology services commensurate with the brigade level of supporting essential medical care and treatment to include: basic hematology, chemistry, parasitology, urinalysis testing, and plane/regional films with digital radiological processing capability.

(k) Patient holding capability to include: nursing care for up to 20 patients.

FOR OFFICIAL USE ONLY (FOUO)

FOR OFFICIAL USE ONLY (FOUO)
FSC (RSTA), BSB, INF

SRC: 6337G600	FSC RSTA	O	WE	Total
		4	1 92	97

Co HQ	Dist Plt	Maint Plt
Field Feeding	CI III Water	Gen Sup
		CI V

Maint
Control

Maint
Sec

Rec
Sec

Maint
Sup

MISSION: To provide direct and habitual combat service to itself and the RSTA squadron, TOE 17495G000.

CAPABILITIES:

- (a) Planning, direction, and supervision of supply distribution points, and field service support.
- (b) Daily receipt, storage, and issue of all classes of supply (less Class VIII) to the RSTA squadron.
- (c) At level 1, with 100% vehicle availability, this unit provides a one-time lift capability of:

DRY Cargo: 4 Warehouse Pallets or
 4 Air Force 463L pallets or
 14 STONS General Cargo-less Class V
 AND
 AMMO 48 Warehouse Pallets or
 8 Air Force 463L pallets or
 51 STONS Class V

- (d) Receives, stores, issues, and distributes up to 6,900 gallons of bulk petroleum daily using HEMTT POL tankers.
- (e) Water storage and distribution for the battalion up to 4,000 gallons per day.
- (f) Food service support for the RSTA squadron and organic personnel.

FOR OFFICIAL USE ONLY (FOUO)

FOR OFFICIAL USE ONLY (FOUO)
FSC INF, BSB, INF

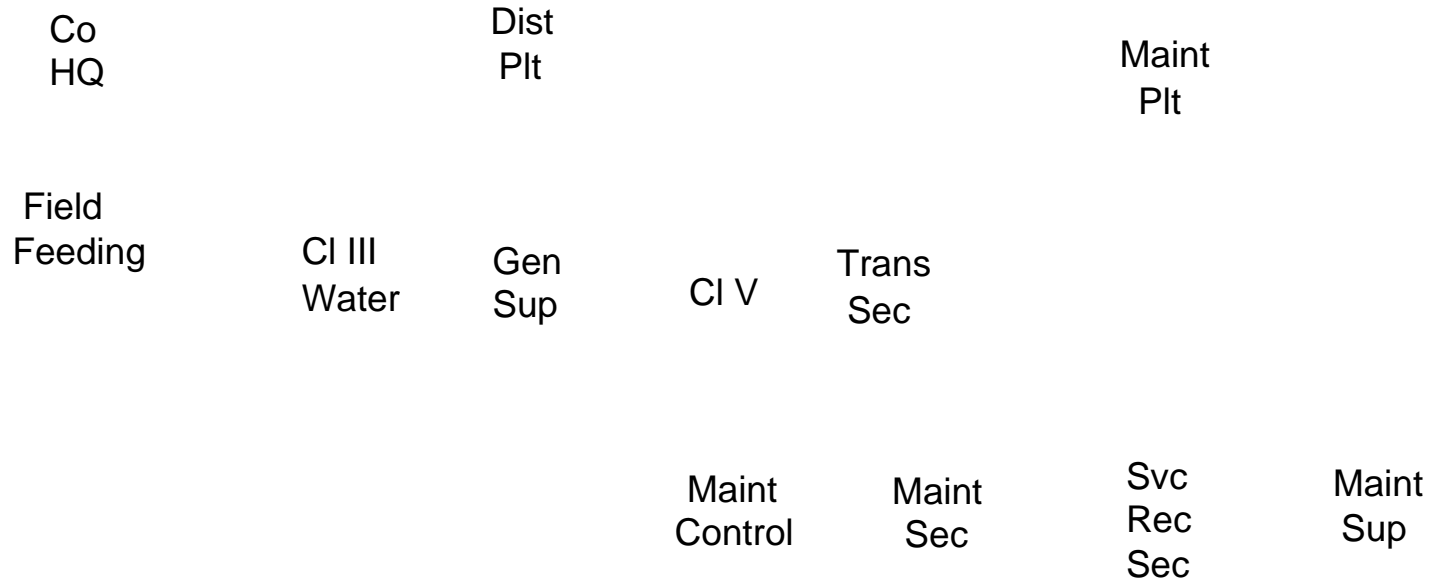
SRC: 6337G700

FSC
INF

O WE

Total

4 1 118 123



MISSION: To provide direct and habitual combat service support to itself and the infantry battalion, TOE 07415G000.

CAPABILITIES:

- (a) Planning, direction, and supervision of supply distribution points, and field service support.
- (b) Daily receipt, storage, and issue of all classes of supply (less Class VIII) to the infantry battalion.
- (c) At level 1, with 100% vehicle availability, this unit provides a one-time lift capability of:

DRY Cargo: 150 Warehouse Pallets or
 25 Air Force 463L pallets or
 89 STONS General Cargo-less Class V
 AND
 AMMO 60 Warehouse Pallets or
 10 Air Force 463L pallets or

64 STONS Class V

- (d) Receives, stores, issues, and distributes up to 4,600 gallons of bulk petroleum daily using HEMTT POL tankers.
- (e) Water storage and distribution for the battalion up to 4,000 gallons per day.
- (f) Food service support for the field artillery battalion and organic personnel.

FOR OFFICIAL USE ONLY (FOUO)

FOR OFFICIAL USE ONLY (FOUO)
FSC FA, BSB, INF

SRC: 6337G800	FSC FA	O	WE	Total
		4	1 87	92

Co HQ	Dist Plt	Maint Plt				
Field Feeding	CI III Water	Gen Sup	CI V			
				Maint Control	Maint Sec	Svc Rec
						Maint Sup

Sec

MISSION: To provide direct and habitual combat service support to itself and the field artillery battalion, TOE 06125G000.

CAPABILITIES:

- (a) Planning, direction, and supervision of supply distribution points, and field service support.
- (b) Daily receipt, storage, and issue of all classes of supply (less Class VIII) to the field artillery battalion.
- (c) The At level 1, with 100% vehicle availability, this unit provides a one-time lift capability of:
 - DRY Cargo: 18 Warehouse Pallets or
 - 3 Air Force 463L pallets or
 - 11 STONS General Cargo-less Class V
 - AND
 - AMMO
 - 60 Warehouse Pallets or
 - 10 Air Force 463L pallets or
 - 64 STONS Class V
- (d) Receives, stores, issues, and distributes up to 4,600 gallons of bulk petroleum daily using HEMTT POL tankers.
- (e) Water storage and distribution for the battalion up to 4,000 gallons per day.
- (f) Food service support for the field artillery battalion and organic personnel.

FOR OFFICIAL USE ONLY (FOUO)

FOR OFFICIAL USE ONLY (FOUO)

Stryker BCT

FOR OFFICIAL USE ONLY (FOUO)

FOR OFFICIAL USE ONLY (FOUO)

Stryker Brigade Combat Team

X

HHC

BSB

ooo

**Brigade
Staff**

RSTA

**Maneuver
Combat**

Anti-Tank

Engineer

**Fires
Battalion**

Support

FOR OFFICIAL USE ONLY (FOUO)

FOR OFFICIAL USE ONLY (FOUO)

HHC, BSB, Stryker BCT

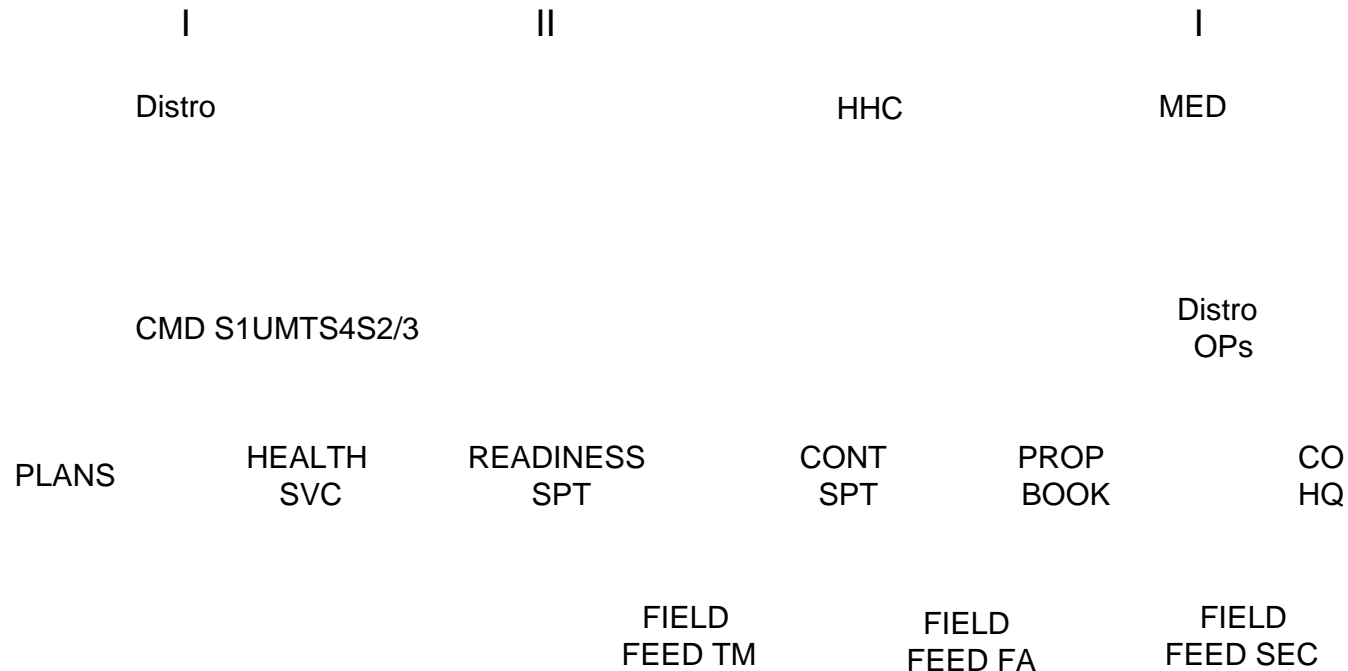
SRC: 63106F400

II

O W E Total

BSB

18 3 135 156



MISSION: Provide command and control, staff planning and supervision of all organic and units assigned and attached to the Brigade Support Battalion (BSB). The HHC, BSB, is located in the Brigade Support Area (BSA). It normally provides span of control over three companies (Distribution Company, Forward Maintenance Company, and Medical Company) with elements dispersed throughout the brigade area.

CAPABILITIES.

- (a) Command and control of units assigned or attached to the BSB.
- (b) Planning, direction, and supervision of CSS administration for all units assigned or attached to the SBCT.
- (c) Planning, direction, and supervision of administration and logistics for units assigned or attached to the battalion.
- (d) Limited unit-level administration and religious services for units of the battalion.
- (e) Planning and direction of rear operations and limited area security as assigned by the supported Brigade Commander.
- (f) Information and advice to the supported Brigade Commander and staff on support capabilities provided by the battalion.
- (g) Field Feeding and limited ration storage. It can distribute to remote units using the Kitchen Company Level Field Feeding (KCLFF).
- (h) Planning and execution of unit-level mortuary affairs training.

(i) Maintaining situational awareness using "command and control" information management systems. These systems provide location/configuration, Total Asset Visibility (TAV), In-Transit Visibility (ITV), and overall connectivity to supported and adjacent units, and higher headquarters.

(j) Property accountability and asset visibility for the brigade.

FOR OFFICIAL USE ONLY (FOUO)

FOR OFFICIAL USE ONLY (FOUO)

DISTRO CO, BSB, Stryker BCT

SRC: 63106F400

O	W	E	Total
5	1	129	135

DISTRO
CO

HQ

TRANS
PLT HQ

Supply
PLT HQ

FUEL/WTR
PLT HQ

Truck
Squad

CL III
SEC

Water

Gen
Sup

CL IX

ATP

MISSION: To provide logistics and field service support to the Stryker Brigade Combat Team (SBCT). It operates as part of the BSB with subordinate elements that operate throughout the Brigade area.

CAPABILITIES.

- (a) Planning, direction, and supervision of supply distribution points, transportation, and field service support to the SBCT.
- (b) Daily receipt, temporarily storage, and issuance of all classes of supply (less Class VIII) to the SBCT.
- (c) The transportation of up to 286 short tons (ST) of cargo daily.
- (d) Class III (B) retail fuel support to the Brigade of up to 31,500 gallons per day.
- (e) Water purification, storage, distribution for the brigade

FOR OFFICIAL USE ONLY (FOUO)

FOR OFFICIAL USE ONLY (FOUO)

MAINT CO, BSB, Stryker BCT

SRC: 43107F400

O	W	E	Total
---	---	---	-------

5	10	232	247
---	----	-----	-----

MAINT
CO

HQ	MAINT PLT HQ	SERVICE RECOVERY	WHEEL VEH PLT HQ	MAINT SPT PLT HQ
		CRT	WHEEL REPAIR	ARMAMENT REPAIR
		FA CRT		GROUND SPT EQUIP REPAIR
				MSL/ELECT REP

MISSION: To provide Field Maintenance Support to a Stryker Brigade Combat Team (SBCT) 47100F300.. The Forward Maintenance Company employs with Brigade Support Battalion (BSB) in the Brigade Support Area (BSA). It has maintenance support teams which employ throughout the Brigade Area.

CAPABILITIES:

- (a) At Level 1, this unit provides command and control for organic and attached personnel.
- (b) This unit maintains combat spares to include receipt, storage, issue, retrograde, and exchange.
- (c) This unit provides Field Maintenance (Unit Level / Direct Support) for an SBCT.
- (d) This unit maintains situational awareness through the automated information management systems.
- (e) This unit is not decremented at Levels 2 and 3.
- (f) This unit is not adaptable to a Type B organization.
- (g) The columns designated by Levels 1 through 3 are designed to relate to the categories established by AR 220-1, Unit Status Reporting.
- (h) This unit is designated as a Category II unit. For unitcategories, see AR 310-25.
- (i) Individuals of this organization can assist in the coordinated defense of the unit's area or installation.

FOR OFFICIAL USE ONLY (FOUO)

FOR OFFICIAL USE ONLY (FOUO)

MED CO, BSB, Stryker BCT

SRC: 08108F400

O	W	E	Total
13	0	58	71

MED
CO

HQ

PREVENT

MENTAL
HLTH

MED TRT
PLT HQ

EVAC
PLT HQ

MED
SEC

AREA SPT
SQUAD

MED TRT
SQUAD
(AREA)

EVAC
FWD

PATIENT
HOLDING
SQUAD

EVAC
AREA

MISSION: To provide brigade-level Health Service Support (HSS) to organizations subordinate to the brigade, and to non-brigade organizations operating in the brigade area. Provides Echelon/Level I and II medical treatment to units in the company's Area of Operation (AO). It provides (C2) for the company and other medical units that may be attached and medical staff advice and assistance as required. Its functions are centered around three basic principles: treat and return to duty; treat and hold (up to 72 hours); and treat (stabilize) and evacuate.

CAPABILITIES:

(a) Command and Control of attached medical units to include health service support planning, policies, and support operations as well as coordination of patient movement within and outside of the brigade area to include allied personnel, and Enemy Prisoners of War (EPW).

(b) Development, preparation, and coordination with the Brigade Surgeon Section (BSS) on the medical portion of the brigade plans and policies.

(c) The capability of performing triage, initial resuscitation/stabilization, and preparation for further evacuation of wounded and Disease and Non-Battle Injury (DNBI) casualties generated in the brigade support area, and unit-level HSS, on an area basis, for all elements without organic medical capability operating in the brigade rear. (f) Evacuation of casualties within the brigade are to treatment facilities by ground ambulances. Plan, prepare, and execute aeromedical evacuation operations when augmented with corps Forward Support MEDEVAC Team (FSMT).

(d) Medical Section that is capable of breaking into three teams and operating independently, for limited periods of time, to provide support for forces involved in combat operations or to perform reconstitution/reinforcement operations, as appropriate.

(e) Emergency dental care to include stabilization of maxillofacial injuries, general dental care designed to prevent or intercept potential dental emergencies, and limited sustaining and maintaining dental treatment.

(f) Laboratory and radiology services commensurate with the brigade level of medical treatment. Provides health service logistics support to include medical equipment maintenance and blood support to the SBCT on an area support basis. (The medical supply section maintains an Authorized Stockage Level (ASL) of Class VIII, medical items.)

FOR OFFICIAL USE ONLY (FOUO)

FOR OFFICIAL USE ONLY (FOUO)

Airborne BCT

FOR OFFICIAL USE ONLY (FOUO)

FOR OFFICIAL USE ONLY (FOUO)

HHC, BSB, Airborne BCT

SRC: 63336G100

II	O	W	E	Total
BSB	19	2	57	78

MED	DISTRO							
		HHC		FSC (RSTA)	FSC (FA)		FSC (INF)	
CMD	S1	S2/3	S6	SPT OPS	CSSAMO	S4	UMT	Co HQ

MISSION: This unit provides command and control for all organic and attached units of the Brigade Support Battalion (BSB).

CAPABILITIES:

- (a) Command and control, personnel accounting/strength reporting and causality reporting for units organic or assigned to the BSB.
- (b) The planning, direction, and supervision of CSS for all assigned and attached units in the Infantry Unit of Action.
- (c) Movement management for internal and external transportation assets operating in the brigade area.
- (d) The planning, direction, and supervision of administration and logistics for units organic or assigned to the battalion.
- (e) Limited unit-level administration and religious services for units of the battalion.
- (f) The planning and direction of rear operations and limited area security as assigned by the supported brigade commander.

(g) Information and advice to the supported brigade commander and staff on support capabilities provided by the battalion.

(h) MRE's during deployment and up to one hot meal per day for the Headquarters Infantry Brigade, Brigade special Troops Battalion (BTB), and the Brigade Support Battalion (BSB) (less the four Forward Support Companies), during initial operations (3 days). Augmentation will be required to provide food service support for attached units.

(i) The planning and execution of unit-level mortuary affairs training.

FOR OFFICIAL USE ONLY (FOUO)

FOR OFFICIAL USE ONLY (FOUO)

DISTRO Co, BSB, Airborne BCT

SRC: 63338G100

DISTRO
Co

O	W	E	Total
6	2	181	189

Co HQ

Trans PLT
HQ

Supply
PLT HQ

Fuel/WTR
PLT HQ

TRK
Squad

Gen
Supply

CL III

CL IX

WTR

Mobility

ATHP

MISSION: To provide transportation and supply support to the Airborne Brigade Combat Team (BCT). It operates as part of the BSB with subordinate elements that operate throughout the BCT area.

CAPABILITIES:

- (a) Planning, direction, and supervision of supply distribution and transportation support to the BCT.
- (b) Daily receipt, temporary storage, and issuance of all classes of supply (less Class VIII) to the BCT.
- (c) The transportation of up to 286 short tons (ST) of cargo daily.
- (d) Class III(B) fuel support to the BCT of up to 69,500 gallons per day. Delivers Class III(B) to the forward support companies within the BCT. Maintains one load for the BCT.
- (e) Water purification. Operates one water point and purifies 30,000 gallons of potable water per day from fresh water and 24,000 galls per day when using salt or brackishwater. Stores and distributes 24,000 gallons to four forward support companies simultaneously. Light Weight Purifier (LWP) operations produce 2,500 gallons per day at two remote locations providing supply support distribution in support of isolated units, as required.

FOR OFFICIAL USE ONLY (FOUO)

FOR OFFICIAL USE ONLY (FOUO)

Field Maint Co, BSB, Airborne BCT

SRC: 43337G100

O W E Total

Maint
Co

4 6 79 89

Co
HQ

Maint Cntrl
PLT/HQ

Wheel VEH
Repair

SRVC
REC

Maint
PLT HQ

Equip
Repair

C & E

ARMAMENT
REPAIR

MISSION: To provide Field Level Maintenance support to an Airborne Brigade Combat Team (ABN BCT).. Organic to the Brigade Support Battalion, (ABN BCT), TOE 63335G100. The Field Maintenance Company normally employs in the Brigade Support Area (BSA).

CAPABILITIES:

(a) Field Maintenance including the following annual man-hour/man-years of productive maintenance based on availability criteria of 3230 man-hours per repairer: MOS TITLE MHRS/MYRS
25U Sig Spt Sys Maint 6,460 / 2 52C Utility Equip Repairer 6,460/ 2 52D Power Generation Repairer 16,150 / 5 63B Wheel Vehicle Repairer 106,590 / 33 63J Quartermaster /Chem Rep 12,920 / 4 94E Radio COMSEC Repairer 3,230 / 1 94F Special Elec Device Rep 6,460 / 2

(b) Field Maintenance support for Auto/Armt, service and recovery, in addition to limited ground support and electronic maintenance to the BSB.

(c) Back-up service and recovery, Auto/Armt, in addition to ground support and electronic maintenance to the Battalion FSCs as required.

(d) Technical assistance to supported units with organic unit maintenance elements.

FOR OFFICIAL USE ONLY (FOUO)

FOR OFFICIAL USE ONLY (FOUO)

Medical Co, BSB, Airborne BCT

SRC: 08339G100

O W E Total

MEDICAL
Co

13 0 57 70

Co
HQ

PRV
MED

MENTAL
HLTH

MED
TRT PLT

MED
TRT SQD

AREA
SPT SQD

BDE MED
SUPPLY

Patient
HLD

EVAC
PLT HQ

MED
TRMT SQ

EVAC
SQD

MISSION: To provide brigade-level Combat Health Support (CHS) to organizations subordinate to the brigade, and to

non-brigade organizations operating in the brigade area. This support includes the employment/coordination of corps level Combat Health Support (CHS) assets attached to the Brigade Combat Team (BCT) for operations.

CAPABILITIES:

(a) Command and Control of attached medical units to include combat health support planning, policies, and support operations as well as coordination of patient movement within and outside of the brigade area to include allied personnel, and Enemy Prisoners of War (EPW).

(b) Current information concerning the medical aspects of the CHS situation to higher command elements.

(c) Development, preparation, and coordination with the Brigade Surgeon Section (BSS) on the medical portion of the brigade plans and policies.

(d) Allocation of medical resources (personnel and equipment) to ensure adequacy of medical treatment to all units operating in the BCT's AO.

(e) The capability of performing triage, initial resuscitation/stabilization, and preparation for further evacuation of wounded and Disease and Nonbattle Injury (DNBI) casualties generated in the brigade support area, and unit-level CHS, on an area basis, for all elements without organic medical capability operating in the brigade rear.

(f) Evacuation of casualties within the brigade are to treatment facilities by ground ambulances. Plan, prepare, and execute aero medical evacuation operations when augmented with corps Forward Support MEDEVAC Team (FSMT).

(g) Treatment teams that are capable of operating independently, for limited periods of time, to provide support for forces involved in combat operations or to perform reconstitution/reinforcement operations, as appropriate.

(h) Dental services to include: emergency dental care focused on stabilization of maxillofacial injuries and other dental emergencies; essential dental care designed to prevent or intercept potential dental emergencies; and limited preventive dentistry.

(i). Optometry services to include: emergency and essential optometry care.

(j) Laboratory and radiology services commensurate with the brigade level of supporting essential medical care and treatment to include: basic hematology, chemistry, parasitology, urinalysis testing, and plane/regional films with digital radiological processing capability.

(k) Patient holding capability to include: nursing care for up to 20 patients.

FOR OFFICIAL USE ONLY (FOUO)

FOR OFFICIAL USE ONLY (FOUO)

FSC, (INF), BSB, Airborne BCT

SRC: 63337G400

O W E Total

4 1 123 128

FSC

Co
HQFLD
FeedDistro
PLT HQMaint
PLT HQCL III/
WTRMaint
SecGEN
SupplySRVC
REC

CL V

Maint
Spt

Trans

MISSION: To provide direct and habitual combat service support to an Infantry Battalion (Infantry, Airborne), TOE 07415G100. It is employed forward in direct support of an Infantry battalion.

CAPABILITIES:

- (a) Planning, direction, and supervision of supply distribution points, and field service support.
- (b) Daily receipt, storage, and issue of all classes of supply (less Class VIII) to the Infantry Battalion.
- (c) At level 1, with 100% vehicle availability, this unit provides a one-time lift capability of:
 - DRY Cargo: 30 Warehouse Pallets or
 - 5 Air Force 463L pallets or

AMMO: 18 STONS General Cargo-Class V
 AND
 60 Warehouse Pallets or
 10 Air Force 463L pallets or
 64 STONS Class V

(d) Receives, stores, issues, and distributes up to 4,600 gallons of bulk petroleum daily using HEMTT POL tankers.

(e) Water storage and distribution for the battalion up to 4,000 gallons per day.

(f) Food service support for the Infantry battalion and organic personnel.

FOR OFFICIAL USE ONLY (FOUO)

FOR OFFICIAL USE ONLY (FOUO)

FSC, (FA), BSB, Airborne BCT

SRC: 63337G500

FSC

O	W	E	Total
4	1	87	92

Co
HQ

FLD
Feed

Distro
PLT HQ

Maint
PLT HQ

CL III/
WTR

Maint
Sec

GEN
Supply

SRVC
REC

CL V

Maint
Spt

MISSION: To provide direct and habitual combat service support to a Fires Battalion, (INFANTRY, AIRBORNE), TOE 06125G100. FSC employed forward in direct support of Fires Battalion. Fires BATTALION, (INFANTRY, AIRBORNE), TOE 06125G100.

CAPABILITIES:

- (a) Command and control to organic and attached personnel.
- (b) Coordination of the support requirements for a Fires BATTALION.
- (c) Daily receipt, storage, and issue of all classes of supply (less Class VIII) to the Fires Battalion.
- (d) Receives, stores, issues, and distributes up to 4,600 gallons of bulk petroleum daily using HEMTT POL tankers.
- (e) Water storage and distribution for the battalion up to 4,000 gallons per day.
- (f) Distribution support of Class V coming from or passing through the FSC.
- (g) Food service and ration distribution.
- (h) Unit and direct support maintenance.
- (i) Situational awareness through the CSSAMO, Combat Service Support Automated information management systems. These systems provide unit location/configuration, total asset visibility (in-transit and in area of operations), and overall connectivity to supported and adjacent units, and higher headquarters.
- (j) At level 1, with 100% vehicle availability, this unit provides a one-time lift capability of:
 - DRY Cargo: 18 Warehouse Pallets or
3 Air Force 463L pallets or
11 STONS General Cargo-less Class V
AND
 - AMMO: 60 Warehouse Pallets or
10 Air Force 463L pallets or
64 STONS Class V

FOR OFFICIAL USE ONLY (FOUO)

FOR OFFICIAL USE ONLY (FOUO)

Chapter 2

Logistics Support in SUAs

FOR OFFICIAL USE ONLY (FOUO)

FOR OFFICIAL USE ONLY (FOUO)

Fires BDE

FOR OFFICIAL USE ONLY (FOUO)

FOR OFFICIAL USE ONLY (FOUO)

Fires Brigade

X

BDE

HHB

BSB

SIG

WLRS
TPQ-37

WLRS
TPQ-36

FA
MLRS

UAV

TGT Acq
Btry

Distro

HHC

HQ

Distro
Plt HQ

Supply

CL III
Water

Co HQ/
Fld Feed

Spt Distro
Squad

CL III
Stor/Iss

CL III
Distro

Water

I
FSC

Stock
Control

Gen
Sup

CL IX

ATHP

HQ

Distro

Distro Company, BSB

Distro Platoon

10 Operators
5 x LMTV w/ TRL

Fld Feed CL V Gen Sup CI III Distro Water CI III/V Squad

FOR OFFICIAL USE ONLY (FOUO)

FOR OFFICIAL USE ONLY (FOUO)
HHB, BSB, Fires BCT

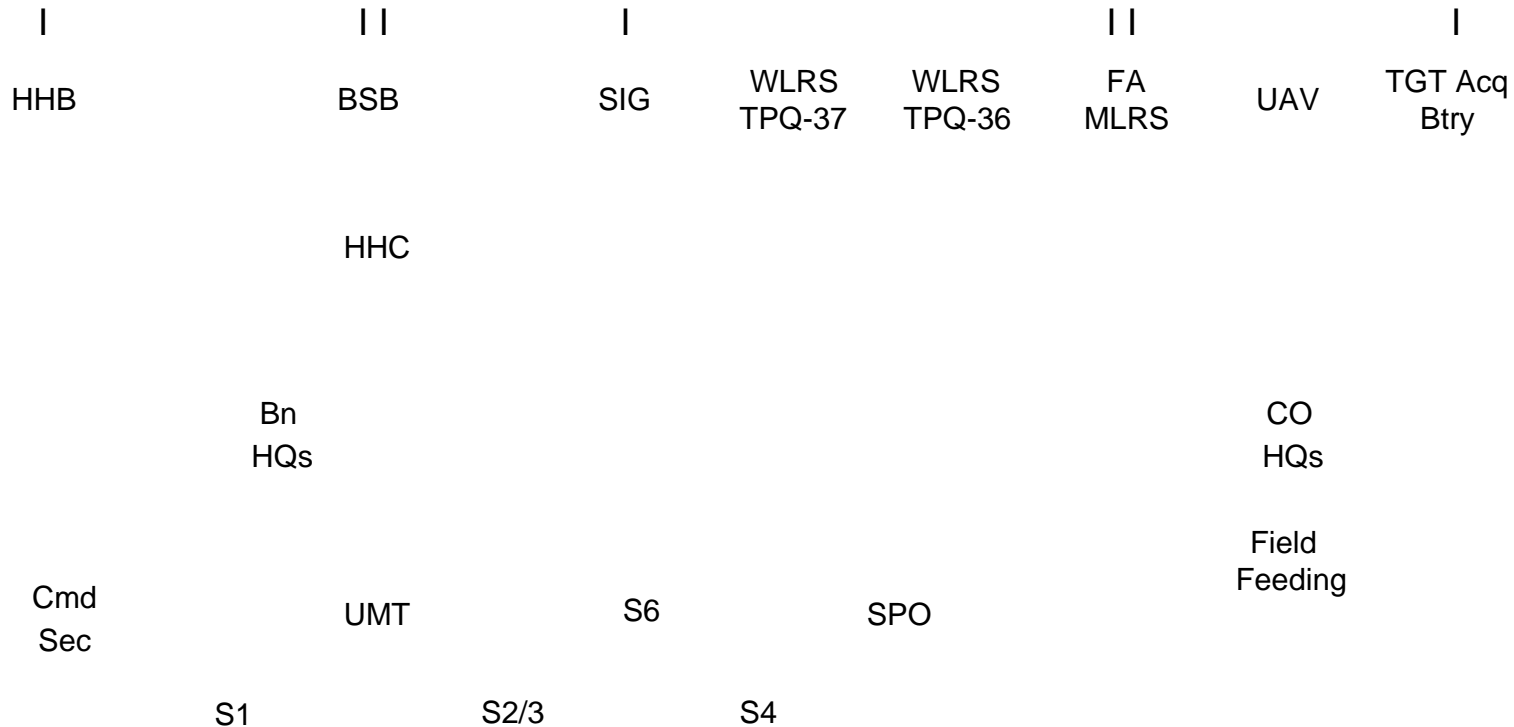
O W E Total

SRC: 63346G000

X

19 4 69 92

BDE



MISSION:

This unit provides command and control for all organic and attached units of the Brigade Support Battalion (BSB).

CAPABILITIES:

- (a) Command and control, personnel accounting/strength reporting and causality reporting for units organic or assigned to the BSB.
- (b) The planning, direction, and supervision of CSS for all assigned and attached units in the Armor UA.
- (c) Movement management for internal and external transportation assets operating in the brigade area.
- (d) The planning, direction, and supervision of administration and logistics for units organic or assigned to the battalion.
- (e) Limited unit-level administration and religious services for units of the battalion.
- (f) The planning and direction of rear operations and limited area security as assigned by the supported brigade commander.
- (g) Information and advice to the supported brigade commander and staff on support capabilities provided by the battalion.
- (h) Provide MREs during deployment and up to one hot meal per day for the HHB Brigade, Brigade Troops Battalion (BTB), and the Brigade Support Battalion (BSB) during initial operations (3 days). Augmentation will be required to provide food service support for attached units.
- (i) The planning and execution of unit-level mortuary affairs training.

FOR OFFICIAL USE ONLY (FOUO)

FOR OFFICIAL USE ONLY (FOUO)

Distribution Company, BSB, Fires BCT

SRC: 63348G000

O W E TOTAL

DIST CO

5 2 116 123

CO
HQs

Trans
Plt

Supply
Plt

Fuel/
Water
Plt

Trans Plt HQ	MLRS Truck Squad	Supply Plt HQ	Gen Sup Sec	Class IX Sec	Fuel/ Water Plt HQ	Class III Sec	Water Sec
	2 Paladin Truck Sq		Stock Ctrl Sec	ATHP Sec			
	Supp / Dist Sqd						

MISSION:

To provide logistics and field service support to the HHC, Brigade Support Battalion, TOE 63346G000.

CAPABILITIES:

- (a) Planning, direction, and supervision of supply distribution points, transportation, and field service support.
- (b) Daily receipt, temporarily storage, and issuance of all classes of supply (less Class VIII).
- (c) The transportation of up to 286 short tons (ST) of cargodaily.
- (d) Class III (B) retail fuel support to the Brigade of up to 31,500 gallons per day.
- (e) Water purification, storage, distribution for the brigade

FOR OFFICIAL USE ONLY (FOUO)

FOR OFFICIAL USE ONLY (FOUO)

Forward Maintenance Company, BSB, Fires BCT

SRC: 43347G000

O W E Total

FWD
MT CO

4 7 119 130

CO
HQ

MT
Control

Area
Spt Plt

Maint
Spt Plt

Plt
HQ

Rec
Sec

Wheel
Veh Sec

Plt
HQ

Elec/
Msl Sec

GSE
Sec

Armt
Sec

MISSION : Provide Field Level Maintenance support to a Brigade Unit of Action.

CAPABILITIES:

(a) Provide recovery, Auto/Armt, Ground Spt and Electronic maintenance and maintenance management to Brigade and Brigade Base Elements (HQ, BSB, BTB).

(b) Provide maintenance advice and support to the brigade. Serve as the central entry and exit point to the

BDE for low density equipment.

(c) Base Support Platoon performs consolidated maintenance on selected (low density) equipment support to the Brigade.

(d) Area Support Platoon performs direct support to the Brigade Base Elements. Maximizes the use of Combat spares. Provides ULLS-G/SAMS-1 support to BTB and BSB companies.

FOR OFFICIAL USE ONLY (FOUO)

FOR OFFICIAL USE ONLY (FOUO)

FSC, MLRS(3x6), BSB, Fires BCT

SRC: 63347G000

O W E Total

FSC, MLRS
Fires BCT

5 1 212 218

HQS

FIELD
FEEDING

DISTRO
PLT

MAINT
PLT

CL III
Distro

WTR
SEC

GEN
SUPPLY

CL V
SEC

Maint
Control

MAINT
SEC

Service/
Recovery

Maint
Sup

MISSION: To provide direct and habitual combat service support to the MLRS Battalion, Fires Brigade.

CAPABILITIES:

- (a) Command and control to organic and attached personnel.
- (b) Coordination of the support requirements for a MLRS battalion.
- (c) Daily receipt, storage, and issue of all classes of supply (less Class VIII) to the MLRS Battalion.
- (d) Receives, stores, issues, and distributes up to 13,150 gallons of bulk petroleum daily using HEMTT POL tankers and a Tank and Pump Unit (TPU).
- (e) Water storage and distribution for the battalion up to 4,000 gallons per day.
- (f) Distribution support of Class V coming from or passing through the FSC in support of a MLRS battalion.
- (g) Food service and ration distribution for a MLRS Battalion and organic personnel.
- (h) Field maintenance of a MLRS Battalion and organic equipment.
- (i) Situational awareness through the automated information management systems. These systems provide unit location/configuration, total asset visibility (in-transit and in area of operations), and overall connectivity to supported and adjacent units, and higher headquarters.
- (j) At level 1, with 100% vehicle availability, this unit provides a one-time lift capability of:

DRY Cargo: 60 Warehouse Pallets OR 10 Air Force 463L pallets OR 35 STONS General
Cargo-less Class V

AND

AMMO: 744 Warehouse Pallets OR 184 Air Force 463L pallets OR 598 STONS Class V
OR

DRY Cargo: 60 Warehouse Pallets OR 10 Air Force 463L pallets OR 35 STONS General
Cargo-less class V

AND

AMMO: 552 Warehouse Pallets OR 136 Air Force 463L pallets OR 445 STONS Class V
AND

20 FT Containers: 12

FOR OFFICIAL USE ONLY (FOUO)

FOR OFFICIAL USE ONLY (FOUO)

FSC, 155 SP (3X6), BSB, Fires BCT

SRC: 63347G100

O W E Total

5 1 212 218

FSC, 155 SP
Fires BCT

HQS

FIELD
FEEDING

DISTRO
PLT

MAINT
PLT

CL III
Distro

WTR
SEC

GEN
SUPPLY

CL V
SEC

Maint
Control

MAINT
SEC

Service/
Recovery

Maint
Sup

MISSION: To provide direct and habitual combat service support to 155SP battalion, Fires Unit of Action

CAPABILITIES :

- (a) Command and control to organic and attached personnel.
- (b) Coordination of the support requirements for an MLRS battalion.
- (c) Daily receipt, storage, and issue of all classes of supply (less Class VIII) to the 155SP Battalion.
- (d) Receives, stores, issues, and distributes up to 13,150 gallons of bulk petroleum daily using HEMTT POL tankers and TPUs

- (e) Water storage and distribution for the battalion up to 4,000 gallons per day.
- (f) Distribution support of Class V coming from or passing through the FSC in support of a 155SP battalion.
- (g) Food service and ration distribution for a 155SP battalion and organic personnel.
- (h) Unit and direct support maintenance a 155SP battalion and organic personnel.
- (i) Base shop and on-site contact maintenance a 155SP battalion and organic personnel.
- (j) Situational awareness through the automated information management systems. These systems provide unit location/configuration, total asset visibility (in-transit and in area of operations), and overall connectivity to supported and adjacent units, and higher headquarters.
- (k) At level 1, with 100% vehicle availability, this unit provides a one-time lift capability of:

DRY Cargo: 60 Warehouse Pallets or 10 Air Force 463L pallets or 35 STONS General
Cargo-less Class V

AND

AMMO: 120 Warehouse Pallets OR 28 Air Force 463L pallets OR 102 STONS Class V

AND

20 FT Containers: 6

FOR OFFICIAL USE ONLY (FOUO)

FOR OFFICIAL USE ONLY (FOUO)

FSC, HIMARS (3X6), BSB, Fires BCT

SRC: 63347G200

O W E Total

5 1 212 218

FSC, HIMARS
Fires BCT

HQS

FIELD
FEEDING

DISTRO
PLT

MAINT
PLT

CL III
DistroWTR
SECGEN
SUPPLYCL V
SECMaint
ControlMAINT
SECService/
RecoveryMaint
Sup

MISSION: To provide direct and habitual combat service support to a HIMARS battalion, Fires Unit of Action

CAPABILITIES:

- (a) Command and control to organic and attached personnel.
- (b) Coordination of the support requirements for an MLRS battalion.
- (c) Daily receipt, storage, and issue of all classes of supply (less Class VIII) to the HIMARS Battalion.
- (d) Receives, stores, issues, and distributes up to 13,150 gallons of bulk petroleum daily using HEMTT POL tankers and a Tank and Pump Unit (TPU).
- (e) Water storage and distribution for the battalion up to 4,000 gallons per day.
- (f) Distribution support of Class V coming from or passing through the FSC in support of a HIMARS battalion.
- (g) Food service and ration distribution for a HIMARS battalion and organic personnel.
- (h) Unit and direct support maintenance for battalion and organic personnel.
- (i) Base shop and on-site contact maintenance for battalion and organic personnel.
- (j) Situational awareness through the automated information management systems. These systems provide unit location/configuration, total asset visibility (in-transit and in area of operations), and overall connectivity to supported and adjacent units, and higher headquarters.
- (k) At level 1, with 100% vehicle availability, this unit provides a one-time lift capability of:

DRY Cargo: 60 Warehouse Pallets OR 10 Air Force 463L pallets OR 35 STONS General
Cargo-Class V

AND

AMMO: 600 Warehouse Pallets OR 148 Air Force 463L pallets OR 483 STONS Class V

AND

20 FT Containers: 9

FOR OFFICIAL USE ONLY (FOUO)

FOR OFFICIAL USE ONLY (FOUO)

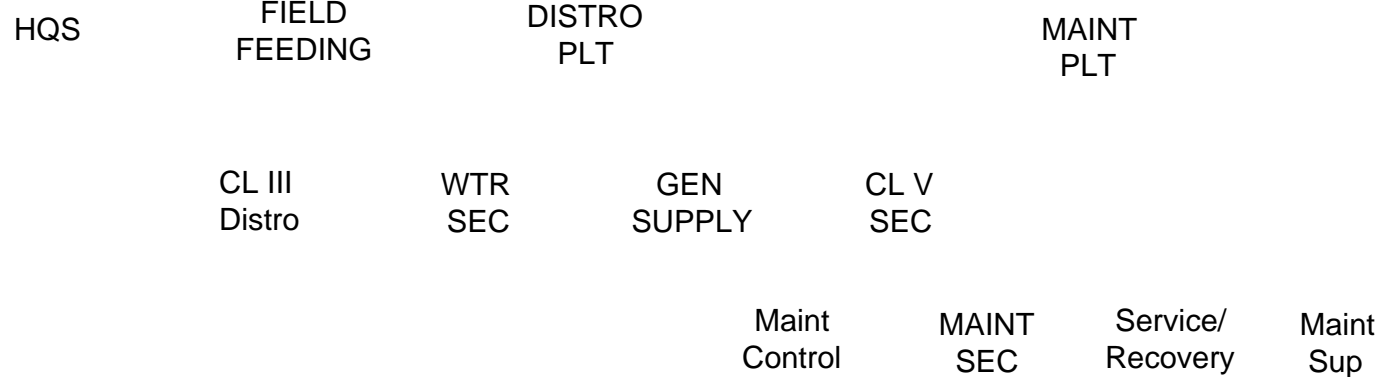
FSC, 155 Towed (3x6), BSB, Fires BCT

SRC: 63347G300

O W E Total

FSC,
155 Towed
Fires BCT

5 1 212 218



MISSION:

To provide direct and habitual combat service support to the 155T Battalion, Fires Brigade

CAPABILITIES:

- (a) Command and control to organic and attached personnel.
- (b) Coordination of the support requirements for a 155T battalion.
- (c) Daily receipt, storage, and issue of all classes of supply (less Class VIII) to the 155T Battalion.
- (d) Receives, stores, issues, and distributes up to 13,150 gallons of bulk petroleum daily using HEMTT POL tankers and a Tank and Pump Unit (TPU).
- (e) Water storage and distribution for the battalion up to 4,000 gallons per day.
- (f) Distribution support of Class V coming from or passing through the FSC in support of a 155T battalion.
- (g) Food service and ration distribution for a 155T Battalion and organic personnel.

- (h) Field maintenance of a 155T Battalion and organic equipment.
- (i) Situational awareness through the automated information management systems. These systems provide unit location/configuration, total asset visibility (in-transit and in area of operations), and overall connectivity to supported and adjacent units, and higher headquarters.
- (j) At level 1, with 100% vehicle availability, this unit provides a one-time lift capability of:

DRY Cargo:	60 Warehouse Pallets or 10 Air Force 463L pallets or 35 STONS General Cargo-less Class V
	AND
AMMO	216 Warehouse Pallets or 52 Air Force 463L pallets or 178 STONS General cargo-less class V
	OR
DRY Cargo:	60 Warehouse Pallets or 10 Air Force 463L pallets or 35 STONS General Cargo-less class V
	AND

20 FT Containers: 12

FOR OFFICIAL USE ONLY (FOUO)

FOR OFFICIAL USE ONLY (FOUO)

Aviation BDE

FOR OFFICIAL USE ONLY (FOUO)

FOR OFFICIAL USE ONLY (FOUO)

Aviation Brigade

X

MF

Organic

Typically Assigned

HHC

ASB

ATK

U

ASLT

GS

CL IV

HVY	MED	LT
AH-48	OH-30	OH-60
UH-38	AH-24	UH-38
CH-12	UH-38	CH-12
HH-12	CH-12	HH-12
	HH-12	

FOR OFFICIAL USE ONLY (FOUO)

FOR OFFICIAL USE ONLY (FOUO)
HSC, ASB, HEAVY

SRC: 63316G100	H&S Co	OW	E	Total
		22 5	176	203

Bn
HQ

Co
HQ

CSS AMO	UMT	S-1 Sec	S-2/3 Sec	Spt Opns	S-4	Med Plt	Maint Plt Stock Control	Fld Feed
Cmd Sec		S-6				Treat	Evac	

Sqd

Sqd

Main
Sec

MISSION: The headquarters provides command and control and supervision for assigned and attached units.

CAPABILITIES:

- (a) Command and control and supervision of organic and attached units.
- (b) Command and control of all units in its assigned area for security and terrain management.
- (c) Planning, directing, and supervising the sustainment and field maintenance and supply missions in support of the Aviation BCT.
- (d) Information and advice to the brigade and supported commanders and their staff on support provided by the battalion.
- (e) Planning and supervising administration and logistics support for organic and attached units.
- (f) Planning, coordinating and executing rear operations in the Brigade Support Area as assigned by the Aviation Brigade Commander, primarily base self defense.
- (g) Field Feeding for the ASB and brigade headquarters.
- (h) Coordination of other field services provided to the supported brigade by elements of the Aviation Support Battalion or Sustainment UA.
- (i) CSSAMO provides data automation support to the BDE Support Operations and provides customer support in sustaining and operating the Army's Combat Service Support Standard Army Management Information Systems (STAMIS).
- (j) Unit-level religious support for organic and attached units.

FOR OFFICIAL USE ONLY (FOUO)

FOR OFFICIAL USE ONLY (FOUO)
DIST CO, ASB, HEAVY

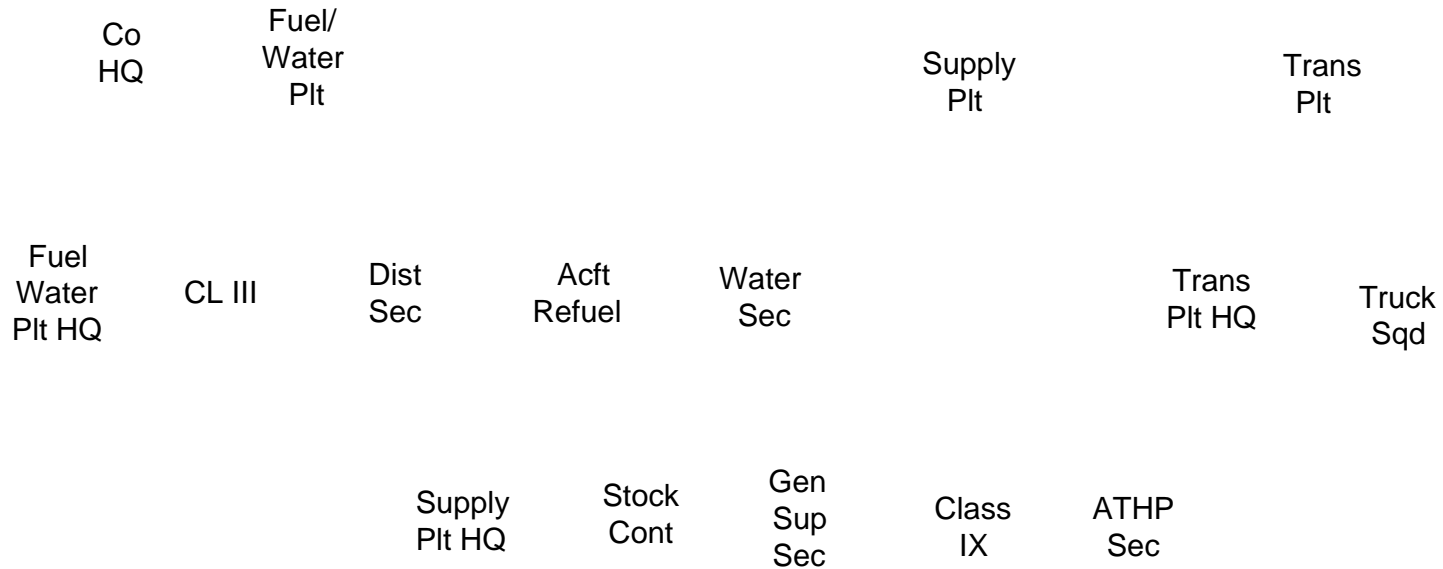
SRC: 63318G100

Dist
Co

O WE

Total

5 2 157 164



MISSION. To provide logistics and field service support to a Heavy Aviation Brigade, TOE 01300G400.

CAPABILITIES:

- (a) Planning, direction, and supervision of supply distribution points, transportation, and field service support to the Brigade.
- (b) Daily receipt, storage, and issue of all classes of supply (less Class VIII) to the Heavy Aviation Brigade.
- (c) The transportation of up to 286 short tons (ST) of cargo daily.
- (d) Class III (B) retail fuel support to the Brigade of up to 120,000 gallons per day.
- (e) Water purification, storage, and distribution for the brigade.

FOR OFFICIAL USE ONLY (FOUO)

AV MAINT CO, ASB, HEAVY

SRC: 01918G200	AV Main Co	O	WE	Total
		4	13 302	319

Co
HQ

Prod
Ctrl

Sys
Rep
Plt

Aircrft
Comp

AVIM
AUG

SRC:
X15 01518GB00

Qual
Ctrl

Main
Test
Flight

X6

X3

X2

X3

Repair
Secs

Atck
Sys

Asslt
Sys

Gen
Spt
AV Bn

Hvy
Lift

QM Pet
QM Tm

SRC:

10560GA00

MISSION: To provide Aviation Intermediate Maintenance (AVIM) and limited backup Aviation Unit Maintenance (AVUM) support to the Division Aviation Brigade, TOE

CAPABILITIES:

(a) AVIM support for the Aviation Brigade which has the following aircraft::

AH-64 48 (6 x 8) Attack

UH-60 30 (3 x 10) Assault

UH-60 8 (1 x 8) General Support

CH-47 12 (1 x 12) Heavy Lift

HH-60 12 (1 x 12) Air Ambulance

(b) Maintenance support teams from assets within the unit to repair aircraft on site or prepare for aircraft evacuation.

(c) Maintenance test flight evaluator support to the supported AVUM unit.

(d) Backup aircraft recovery and retrograde of repairable aviation equipment.

(e) A shop stock of 2,452 Line Items.

(f) Fueling and defueling services for supported aircraft while in AVIM.

(g) Limited AVIM simultaneously in two locations with forward maintenance support teams.

FOR OFFICIAL USE ONLY (FOUO)

FOR OFFICIAL USE ONLY (FOUO)
HSC, ASB, MEDIUM

SRC: 63316G200

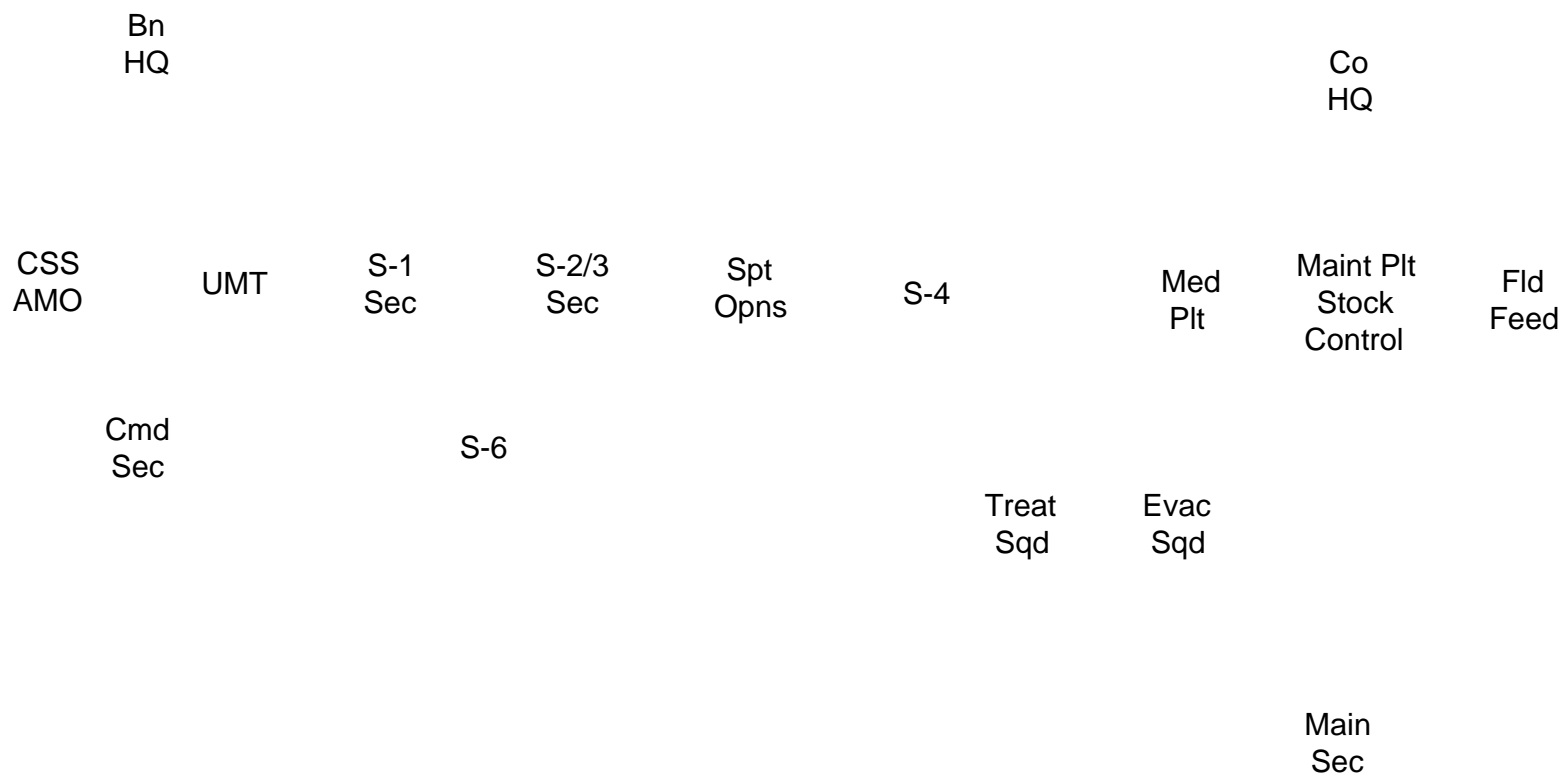
H&S
Co

OW

E

Total

22 5 181 208



MISSION: The headquarters provides command and control and supervision for assigned and attached units.

CAPABILITIES:

- (a) Command and control and supervision of organic and attached units.
- (b) Command and control of all units in its assigned area for security and terrain management.
- (c) Planning, directing, and supervising the sustainment and field maintenance and supply missions in support of the Aviation BCT.
- (d) Information and advice to the brigade and supported commanders and their staff on support provided by the battalion.
- (e) Planning and supervising administration and logistics support for organic and attached units.
- (f) Planning, coordinating and executing rear operations in the Brigade Support Area as assigned by the Aviation Brigade Commander, primarily base self defense.
- (g) Field Feeding for organic and attached units.
- (h) Coordination of other field services provided to the supported brigade by elements of the Aviation Support Battalion or Sustainment UA.

(i) CSSAMO provides data automation support to the Support Operations and provides customer support in sustaining and operating the Army's Combat Service Support Standard Army Management Information Systems (STAMIS).

FOR OFFICIAL USE ONLY (FOUO)

FOR OFFICIAL USE ONLY (FOUO)
DIST CO, ASB, MEDIUM

SRC: 63107F400	Dist Co	O	WE	Total
		5	2 156	163

Co HQ	Fuel/ Water Plt	Supply Plt	Trans Plt
Fuel Water Plt HQ	CL III	Water Sec	Trans Plt HQ
		Supply Plt HQ	Truck Sqd
		Gen Sup Sec	Class IX
		ATHP Sec	

MISSION. To provide logistics and field service support to the Aviation BDE..

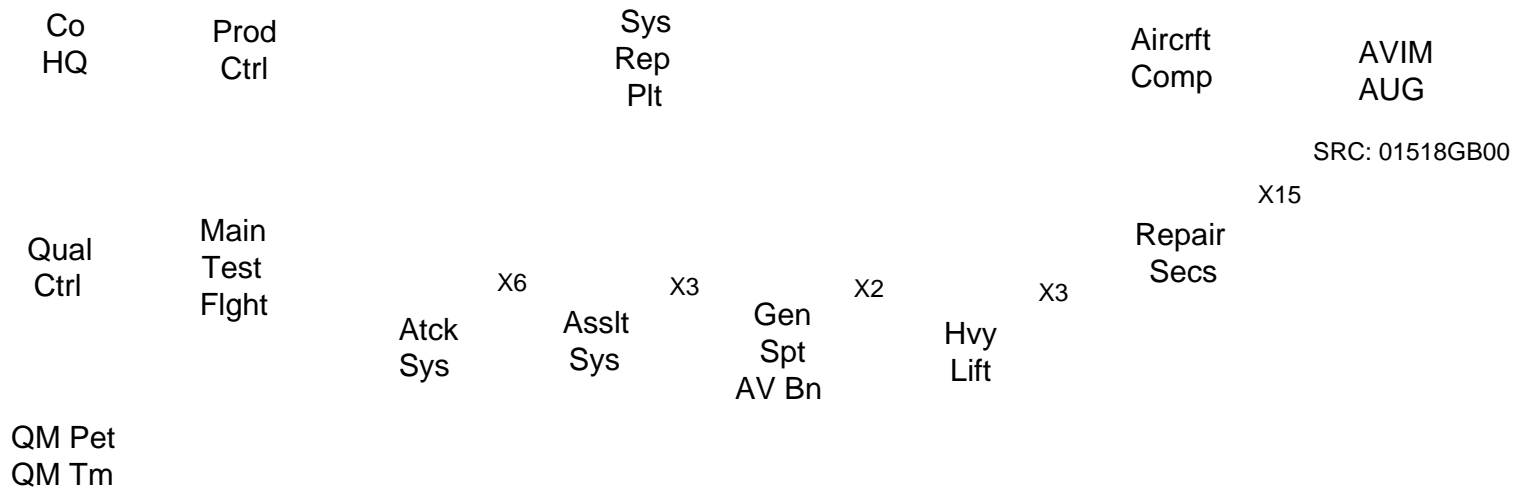
CAPABILITIES:

- (a) Planning, direction, and supervision of supply distribution points, transportation, and field service support to the brigade.
- (b) Daily receipt, temporarily storage, and issuance of all classes of supply (less Class VIII) to the Aviation BDE.
- (c) The transportation of up to 286 short tons (ST) of cargo daily.
- (d) Class III (B) retail fuel support to the Brigade of up to 31,500 gallons per day.
- (e) Water purification, storage, distribution for the brigade

FOR OFFICIAL USE ONLY (FOUO)

AV MAINT CO, ASB, MEDIUM

SRC: 01928G100	AV Main Co	O	WE	Total
		4	13 309	326



SRC: 10560GA00

MISSION. To provide Aviation Intermediate Maintenance (AVIM) and backup Aviation Unit Maintenance (AVUM) support to all aircraft assigned to the Aviation BDE.

CAPABILITIES:

(a) AVIM support for the Aviation Brigade, TOE , which has the following aircraft:

- AH-64 24 (3 X 8 Attack)
- OH-58D 30 (3 x 10 Attack)
- UH-60 8 (1 x 8 Command)
- UH-60 30 (3 x 10 Assault)
- HH-60 12 (1 x 12 Medevac)
- CH-47 12 (1 x 12 Cargo)

(b) A shop stock of 850 items.

(c) Retrograde of repairable aviation equipment.

(d) On-site maintenance support and technical assistance with forward repair/recovery teams organized from internal assets.

(e) Maintenance test flight evaluator support to the supported AVUM units.

- (f) Backup aircraft recovery.
- (g) Limited AVIM simultaneously in two locations with forward maintenance support teams.

FOR OFFICIAL USE ONLY (FOUO)

FOR OFFICIAL USE ONLY (FOUO)
HSC, ASB, LIGHT

SRC: 63316G300		OW	E	Total
	H&S Co	22 6	167	195

Bn
HQ

Co
HQ

CSS
AMO

UMT

S-1
Sec

S-2/3
Sec

Spt
Ops

S-4

Med
Plt

Maint Plt
Stock
Control

Fld
Feed

Cmd
Sec

S-6

Treat
Sqd

Evac
Sqd

Main
Sec

MISSION: The headquarters provides command and control and supervision for assigned and attached units.

CAPABILITIES:

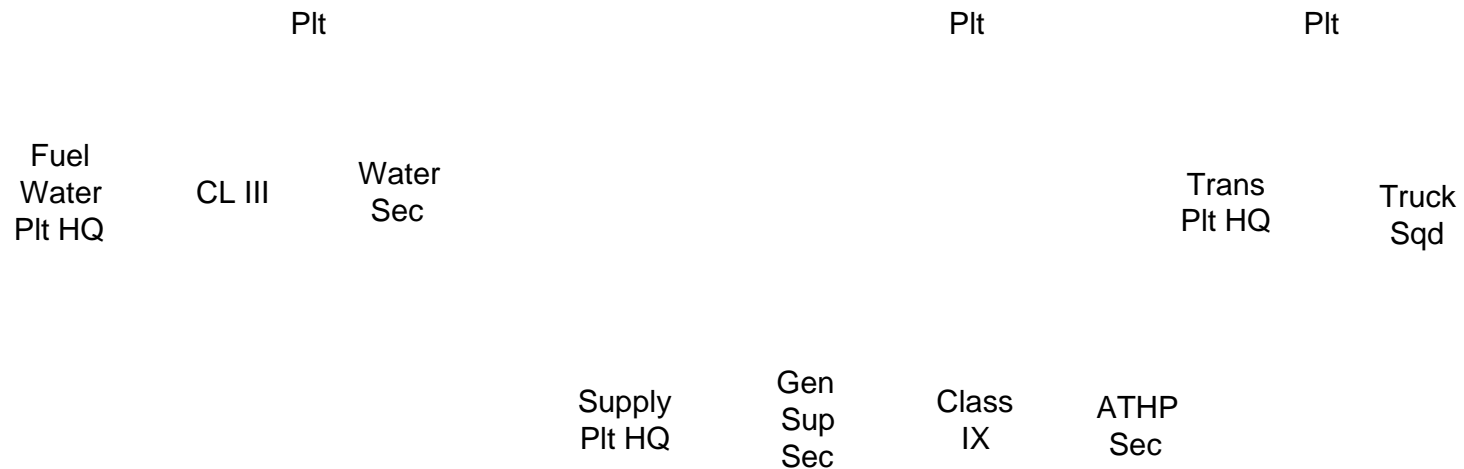
- (a) Command and control and supervision of organic and attached units.
- (b) Command and control of all units in its assigned area for security and terrain management.
- (c) Planning, directing, and supervising the sustainment and field maintenance and supply missions in support of the Aviation BCT.
- (d) Information and advice to the BCT brigade and supported commanders and their staff on support provided by the battalion.
- (e) Planning and supervising administration and logistics support for organic and attached units.
- (f) Planning, coordinating and executing rear operations in the Brigade Support Area as assigned by the Aviation Brigade Commander, primarily base self defense.
- (g) Field Feeding for the ASB and brigade headquarters.
- (h) Coordination of other field services provided to the supported brigade by elements of the Aviation Support Battalion or Sustainment UA.
- (i) CSSAMO provides data automation support to the BDE Support Operations and provides customer support in sustaining and operating the Army's Combat Service Support Standard Army Management Information Systems (STAMIS).

FOR OFFICIAL USE ONLY (FOUO)

FOR OFFICIAL USE ONLY (FOUO)
DIST CO, ASB, LIGHT

SRC: 63318G300	Dist Co	O	WE	Total
		5	2	156
				163

Co HQ	Fuel/ Water	Supply	Trans
----------	----------------	--------	-------



MISSION. To provide logistics and field service support to the Aviation BDE.

CAPABILITIES:

- (a) Planning, direction, and supervision of supply distribution points, transportation, and field service support to the brigade.
- (b) Daily receipt, temporarily storage, and issuance of all classes of supply (less Class VIII) to the brigade.
- (c) The transportation of up to 286 short tons (ST) of cargo daily.
- (d) Class III (B) retail fuel support to the Brigade of up to 31,500gallons per day.
- (e) Water purification, storage, distribution for the brigade.

FOR OFFICIAL USE ONLY (FOUO)

AV MAINT CO, ASB, LIGHT

SRC: 01913G100	AV Main Co	O	WE	Total
		4	13 328	345

Co
HQ

Prod
Ctrl

Sys
Rep
Plt

Aircft
Comp

Qual
Ctrl

Main
Test
Flight

X6

Atck
Sys

X3

Asslt
Sys

X2

Gen
Spt
AV Bn

X3

Hvy
Lift

Repair
Secs

X15

QM Pet
QM Tm

SRC: 10560GA00

MISSION: To provide Aviation Intermediate Maintenance (AVIM) and backup Aviation Unit Maintenance (AVUM) support to all aircraft assigned to the Aviation Brigade (LID).

CAPABILITIES:

(a) AVIM support for the Aviation Brigade, TOE , which has the following aircraft:

OH-58D 60 (6 x 10 Attack)

UH-60 8 (1 x 8 General Support)
 UH-60 30 (3 x 10 Assault)

HH-60 12 (1 x 12 Medevac)

CH-47 12 (1 x 12 Cargo)

- (b) A shop stock of 850 items.
- (c) Retrograde of repairable aviation equipment.
- (d) On-site maintenance support and technical assistance with forward repair/recovery teams organized from internal assets.
- (e) Maintenance test flight evaluator support to the supported AVUM units.
- (f) Backup aircraft recovery.
- (g) Limited AVIM simultaneously in two locations with forward maintenance support teams.

FOR OFFICIAL USE ONLY (FOUO)

FOR OFFICIAL USE ONLY (FOUO)
PSC, AV ASSAULT BN

SRC: 63217G300

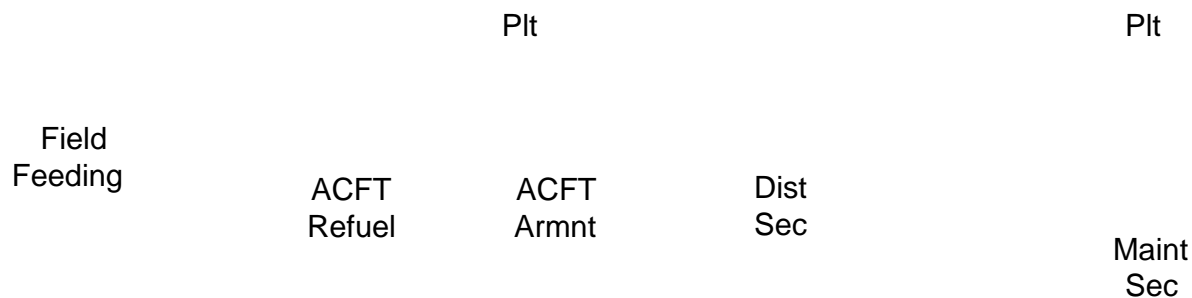
FSC
 ASLT

O	WE	Total
4	1 110	115

Co
 HQ

Dist

Maint



MISSION: To provide direct and habitual combat service support to itself and the Assault Battalion, TOE 01325G100

CAPABILITIES:

- (a) Command and control and supervision of organic and attached units.
- (b) Command and control of all units in its assigned area for security and terrain management.
- (c) Planning, directing, and supervising the sustainment and field maintenance, field feeding, distribution, and supply missions in support of the Assault Aviation BN.
- (d) Information and advice to the BN and supported commanders and their staff on support provided by the company.
- (e) Planning and supervising administration and logistics support for organic and attached units.
- (f) Water storage and distribution for the battalion up to 4,000 gallons per day.
- (g) At level 1, with 100% vehicle availability, this unit provides a one-time lift capability of:
 - Cargo: 48 Warehouse Pallets or
8 Air Force 463L pallets or
28 STONS general cargo-less class V or
50 STONS class V
 - AND
 - Bulk Water: 4000 gallons
 - Bulk Fuel: 5000 gallons

FOR OFFICIAL USE ONLY (FOUO)

FOR OFFICIAL USE ONLY (FOUO) FSC, GS AVIATION BN

SRC: 63217G200

O	WE	Total
4	1 136	141

FSC
GS

Co
HQ

Dist
Plt

Maint
Plt

Field
Feeding

CLIII
Sec

CL III
Air/Amb
Sec

Dist
Sec

Maint
Sec

MISSION: To provide direct and habitual combat service support to itself and the General Support Aviation Battalion, TOE 01125G100

CAPABILITIES:

- Command and control and supervision of organic and attached units.
- Command and control of all units in its assigned area for security and terrain management.
- Planning, directing, and supervising the sustainment and field maintenance, field feeding, distribution,

and supply missions in support of the General Support Aviation BN.

- (d) Information and advice to the BN and supported commanders and their staff on support provided by the company.
- (e) Planning and supervising administration and logistics support for organic and attached units.
- (f) Water storage and distribution for the battalion up to 4,000 gallons per day.
- (g) At level 1, with 100% vehicle availability, this unit provides a one-time lift capability of:

Cargo: 48 Warehouse Pallets or
 8 Air Force 463L pallets or
 28 STONS general cargo-less class V or
 50 STONS class V
 AND
 Bulk Water: 4,000 gallons
 Bulk Fuel: 5,000 gallons

FOR OFFICIAL USE ONLY (FOUO)

FOR OFFICIAL USE ONLY (FOUO)
FSC, Air Reconnaissance BN

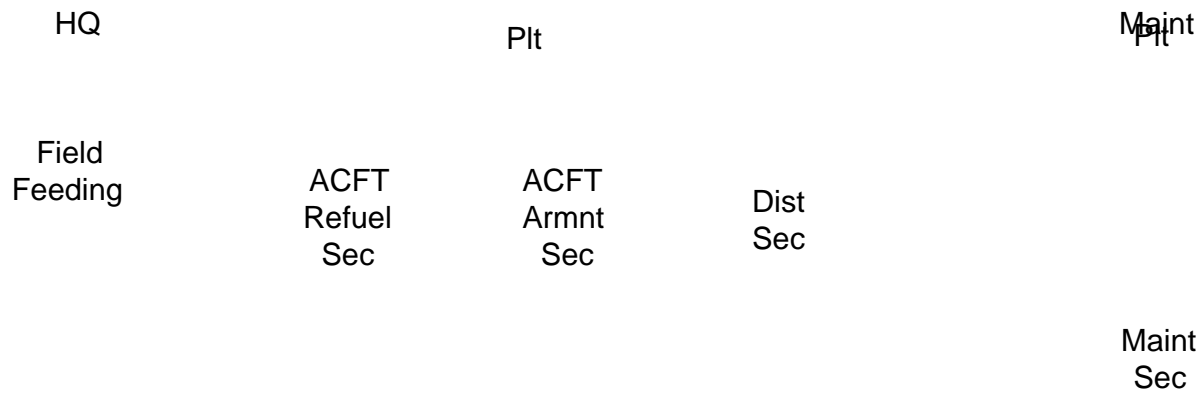
SRC: 63217G100

	O	WE			Total
	4	1	116		121

FSC
AR

Co

Dist



MISSION: To provide direct and habitual combat service support to itself and the Air Reconnaissance Battalion, TOE 01265G100

CAPABILITIES:

- (a) Command and control and supervision of organic and attached units.
- (b) Command and control of all units in its assigned area for security and terrain management.
- (c) Planning, directing, and supervising the sustainment and field maintenance, field feeding, distribution, FARP operations and supply missions in support of the Air Reconnaissance BN.
- (d) Information and advice to the BN, supported commanders and their staffs on support provided by the company.
- (e) Planning and supervising administration and logistics support for organic and attached units.
- (f) Water storage and distribution for the battalion up to 4,000 gallons per day.
- (g) At level 1, with 100% vehicle availability, this unit provides a one-time lift capability of:
 - Cargo: 48 Warehouse Pallets or
8 Air Force 463L pallets or
28 STONS general cargo-less class V or
50 STONS class V
AND
 - Bulk Water: 4,000 gallons
 - Bulk Fuel: 5,000 gallons

FOR OFFICIAL USE ONLY (FOUO)

FOR OFFICIAL USE ONLY (FOUO)

FSC, ATK AV BN (HVY)

SRC: 63217G000

O	WE	Total
4	1	123
		128

FSC
ATK

Co
HQ

Dist
Plt

Maint
Plt

Field
Feeding

ACFT
Refuel
Sec

ACFT
Armnt
Sec

Dist
Sec

Maint
Sec

MISSION: To provide direct and habitual combat service support to itself and the Attack Aviation Battalion, TOE 01285G000.

CAPABILITIES:

- (a) Command and control and supervision of organic and attached units.
- (b) Command and control of all units in its assigned area for security and terrain management.
- (c) Planning, directing, and supervising the sustainment and field maintenance, field feeding, distribution, FARP operations and supply missions in support of the Aviation BN.
- (d) Information and advice to the BN, supported commanders and their staffs on support provided by the company.
- (e) Planning and supervising administration and logistics support for organic and attached units.
- (f) Water storage and distribution for the battalion up to 4,000 gallons per day.
- (g) At level 1, with 100% vehicle availability, this unit provides a one-time lift capability of:

Cargo: 48 Warehouse Pallets or
8 Air Force 463L pallets or
28 STONS general cargo-less class V or
50 STONS class V
AND
Bulk Water: 4000 gallons
Bulk Fuel: 5000 gallons

FOR OFFICIAL USE ONLY (FOUO)

FOR OFFICIAL USE ONLY (FOUO)

Chapter 3

CSS Battalions

FOR OFFICIAL USE ONLY (FOUO)

FOR OFFICIAL USE ONLY (FOUO)

CSSB

TBP

FOR OFFICIAL USE ONLY (FOUO)

FOR OFFICIAL USE ONLY (FOUO)

HHC, Motor Transportation Battalion

SRC: 55716F000

BATTALION
HQ **12-1-36-49**

HQ SECTION	S1 SECTION	UNIT MINISTRY TEAM	S2/3 SECTION	SUPPORT OPS	S4 SECTION	HQ DET
			SUPPORT OPS	COMMO AUTOMATION SECTION	MODE OPS BRANCH	DET HQ

Mission: To command, control, and supervise units conducting motor transport operations.

Capabilities:

- (a) Commands, controls, and technically supervises three to seven motor transport or cargo transfer companies.
- (b) Plans and schedules requirements to conform with the overall movement program.
- (c) Translates transportation requirements from higher HQs into specific vehicle or unit requirements.
- (d) Evaluates highway traffic plans affecting road movement, to include terrain, road conditions, and security.
- (e) Supervises the operation of truck terminals, trailer transfer points, and/or a trailer relay system.
- (f) Coordinates host nation support as available.

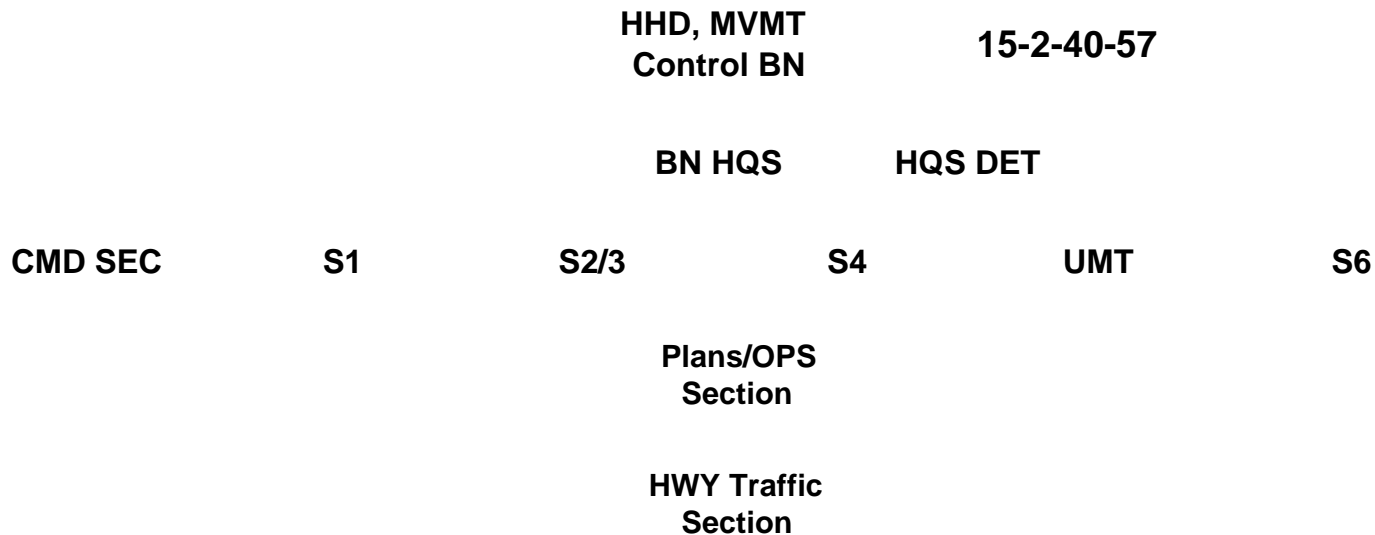
Assignment (Echelon): UEy Theater Sustainment Command, normally attached to a Sustainment BDE with a Theater Opening Element.

FOR OFFICIAL USE ONLY (FOUO)

FOR OFFICIAL USE ONLY (FOUO)

HHC, Movement Control Battalion

SRC: 55606F000



Mission: To command, control and technically supervise movement control teams.

Capabilities:

- (a) Provides command, control, and technical supervision of 6 to 14 movement control detachments.
- (b) Coordinates use of common user transportation assets.
- (c) Provides in transit visibility of unit moves and convoy movements.
- (d) Provides transportation asset visibility.

Assignment (Echelon): UEy normally attached to a Theater Sustainment Command.

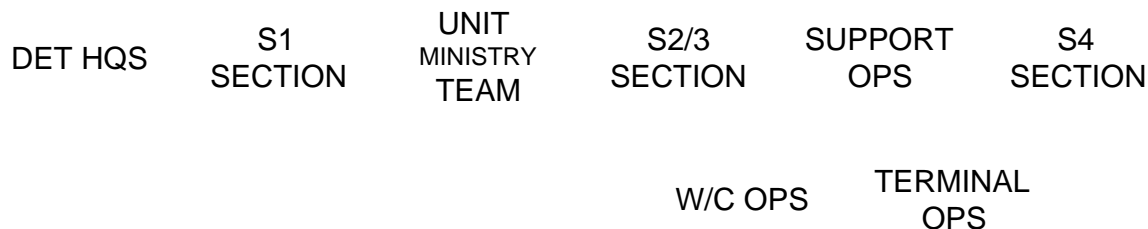
FOR OFFICIAL USE ONLY (FOUO)

FOR OFFICIAL USE ONLY (FOUO)

HHC, Trans Terminal Battalion

SRC: 55819F000

CMD SEC **15-4-58-77**



Mission: To command, control, plan for, and supervise attached units

employed in the operation of water terminal (fixed port or LOTS) operations.

Capabilities:

(a) Commands, controls, plans for employment, and supervises attached units required to discharge or backload up to four ship simultaneously at an established fixed port, or up to two ships simultaneously at a LOTS site.

(b) Commands and controls three to seven transportation companies involved in fixed port or LOTS operations

Assignment (Echelon): UEy: To a Theater Sustainment Command, normally attached to a Sustainment BDE with a Theater Opening Element.

FOR OFFICIAL USE ONLY (FOUO)

FOR OFFICIAL USE ONLY (FOUO)

HHC, Trans Railway Battalion

SRC: 55916L000

HHD, TRANS
RAILWAY BN
55916L000

10-1-40-51

BN HQ

DET HQ
1-HMMWV
1-TRK CARGO

CMD SEC
1-HMMWV

UMT
1-HMMWV

S1 SEC
1-HMMWV

S2/3 SEC
2-HMMWV

S4 SEC
1-HMMWV

COMMO SEC
1-HMMWV

RAILWAY
Supply Sec
1-HMMWV

Mission: To command, control, plan for, and technically supervise threeto seven railway operating companies.

Capabilities:

- (a) Provides command, control, planning, and technical supervision of three to seven railway operating companies.
- (b) Operates and maintains a railway division of approximately 150 miles.
- (c) Dispatches all trains, supervises on-line operations, and operates rail stations and signal towers within a railway division.
- (d) Maintains and repairs railway signal towers and railwayland-line communications.
- (e) Maintains a rotating stock of 19,700 tons of repair parts and railway peculiar supplies daily.

Assignment (Echelon): UEy Theater Sustainment Command, normally attached to a

Sustainment BDE.

FOR OFFICIAL USE ONLY (FOUO)

FOR OFFICIAL USE ONLY (FOUO)

QM POL Pipeline & Terminal Ops Battalion

SRC: 10416L000

**QM POL PL/TERM
OP BN 12-3-55-70**

**BN
HQ**

**S2/S3
SEC**

**MINISTRY
TM**

**CO
HQ**

**S-1
SEC**

**S-4
SEC**

**COMM
SEC**

**SEC &
PLANS BR**

**POL OPS
BR**

**POL LAB
BR**

Mission: To provide command, administrative, technical and operational supervision for the operation and maintenance of a military petroleum distribution system.

Capabilities:

- (a) Commands two to five petroleum pipeline and terminal operating companies and other assigned or attached units supporting the pipeline and terminal operation.
- (b) Plans, controls and supervises the operation and maintenance of 450 miles of multi-product pipeline and related terminal activities.
- (c) Supervises petroleum quality surveillance and operates a mobile petroleum products laboratory.
- (d) Operates the central dispatching agency to schedule and direct the flow of bulk petroleum through the pipeline.

Assignment (Echelon) : To a Petroleum Group, UEy.

FOR OFFICIAL USE ONLY (FOUO)

FOR OFFICIAL USE ONLY (FOUO)

QM POL Pipeline & Terminal Ops Battalion

SRC: 10426L000

QM POL
SUP BN

11-1-49-61

BN
HQ

S2/S3
SEC

Unit Ministry
Team

DET
HQ

S-1
SEC

S-4
SEC

COMM
SEC

SEC &
PLANS BR

POL OPS
BR

POL LAB
BR

Mission: To provide command and control, administrative, technical, and operational supervision over assigned or attached petroleum supply companies and petroleum truck companies.

Capabilities:

- (a) Commands two to five petroleum supply and truck companies.
- (b) Plans for the storage, distribution, and quality surveillance of bulk petroleum products.
- (c) Maintains Theater petroleum reserve.
- (d) Operates a mobile petroleum products laboratory.

Assignment (Echelon) : To a Theater Support Command (TSC) , or to a Petroleum Group (UEy).

FOR OFFICIAL USE ONLY (FOUO)

FOR OFFICIAL USE ONLY (FOUO)
HHD, Ammo Battalion

SRC: 09666L000

HHD ORD
BN AMMO **11-2-37-50**

HQS
DET

BN HQ

DET HQ

COMMAND
SEC

S1 SEC

S6 SEC

S2 / S3
SEC

MAT
SEC

S4 SEC

UMT

Mission: To command and control assigned or attached DS/GS ammunition units and other attached units; and provide supervision of ammunition support operations.

Capabilities:

- (a) Command and control and staff planning for two to five subordinate units.
- (b) Technical direction over ammunition support missions of subordinate units, except inventory management functions for which the operational level Materiel Management Center (MMC) is responsible.
- (c) A consolidated property book for assigned units.

Assignment : Assigned to Sustainment Brigade operating in the UEy.

FOR OFFICIAL USE ONLY (FOUO)

FOR OFFICIAL USE ONLY (FOUO)
HHD, EOD Battalion

SRC: 09446A000

HHD ORD

BN (EOD)

9-1-23-33

COMMAND
SEC

S1 SEC

S2 SEC

S3 SEC

OP PLAN /
LNO TM

S4 SEC

S6 SEC

DET HQ

Mission : Provide command, control, and supervision of EOD operations and functions to include administration and logistical support of assigned units.

Capabilities:

- (a) An operational headquarters for the receipt of explosive ordnance incident reports.
- (b) Command and control of three to ten ordnance companies, TOE 09447L000, and their operational activities within their assigned areas of responsibility.
- (c) Coordination of operations to neutralize hazards resulting from domestic or foreign conventional, nuclear, chemical, biological ordnance, and improved explosive devices (nuclear and non-nuclear).
- (d) One wheeled vehicle mechanic, 63B, is provided to augment the supporting unit maintenance.
- (e) EOD special staff office to theater, corps, or divisionheadquarters.

Assignment: Assigned to the Army Service Component Command (ASCC) or Corps and attached to an Ordnance EOD Group TOE 09662L000

FOR OFFICIAL USE ONLY (FOUO)

FOR OFFICIAL USE ONLY (FOUO)

Chapter 7

CSS Unit Capabilities

FOR OFFICIAL USE ONLY (FOUO)

FOR OFFICIAL USE ONLY (FOUO)

TC Companies / Detachments / Teams

SRC 55

FOR OFFICIAL USE ONLY (FOUO)

FOR OFFICIAL USE ONLY (FOUO) Movement Control Team

SRC: 55506GA000

MCT

3 -0 -18 -21

Mission: To expedite, coordinate for and supervise transportation support required for the movement of units, personnel, and cargo into, through, and out of airports, seaports or assigned geographical areas. Operates highway regulating points as required.

Capabilities: This detachment performs the following movement control functions:

- (a) Validates transportation requirements, coordinates transportation support, highway clearance and inbound clearance for moving units, personnel, and cargo.
- (b) Coordinates transportation movements, diversions, reconsignments, and transfers of units, cargo and personnel.
- (c) Provides intransit visibility of unit equipment and sustainment cargo movements in assigned area of responsibility.
- (d) Observe, assess, report progress, and make changes to tactical and

non-tactical trans movements along MSR
(e) Adjust movement schedules as necessary to coordinate the movement of authorized traffic.

Assignment (Echelon): To a sustainment brigade within a UEx or a UEy, attached to Movement Control Battalion.

FOR OFFICIAL USE ONLY (FOUO)

FOR OFFICIAL USE ONLY (FOUO)
Logistics Support Vessel

SRC: 55530LJ00

LOGISTICS
SUPPORT
VESSEL

0-8-23-31

Mission: To provide transportation for vehicles containers, and/or general cargo

to remote, underdeveloped areas; along coastlines and inland waterways; to support unit deployments, relocations, and port to port operations; to assist in discharging and backloading ships in a RO/RO or LOTS operation; and provide cargo transportation along coastal main supply routes (MSR).

Capabilities:

- (a) Is capable of self-sustainment for a period of 30-45 days with accommodations for a 29-member crew.
- (b) Transports 2,000 STs of cargo: vehicles, containers, and/or general cargo.
- (c) Receives and discharges cargo through a bow ramp or stern ramp.
- (d) Beaches with a 1:30 offshore gradient with a maximum of 900 STs of cargo.
- (e) Performs unit maintenance on all organic equipment, except comsec equipment.
- (f) Provides combat health service and food service support.
- (g) Is capable of self-delivery to a theater of operations and meets the requirements to transit the Panama and Suez canals.

Assignment (Echelon): UEy Theater Sustainment Command or Sustainment BDE, normally attached to a Transportation Terminal Battalion.

FOR OFFICIAL USE ONLY (FOUO)

FOR OFFICIAL USE ONLY (FOUO)

Trailer Transfer Point

SRC: 55540FE000

**Trailer
Transfer
Point**

22-0-1-23

**Operations
section**

**Maintenance
section**

Mission: Operates a trailer transfer point (TTP) supporting line haul and local haul motor transport operations

Capabilities: Process/transfer up to 125 semi trailers per shift in and out.

Assignment (Echelon): UEy Theater Sustainment Command, normally

attached to a Motor Trans BN, and UEx, normally attached to a CSSB.

FOR OFFICIAL USE ONLY (FOUO)

FOR OFFICIAL USE ONLY (FOUO)

Terminal Supervision Team

SRC: 55560FC00

Terminal
Supervision

3/0/18//21

Mission: To manage port or inland terminal operations services by administering and supervising contracts for stevedore and related terminal services, inland waterway and highway/rail transport operations in support

of port or terminal reception and clearance activities. Provide cargo documentation and in-transit visibility services in support of Contracted terminal operations by operating the World-Wide Port System (WPS) and TC-AIMS II systems.

Capabilities:

- (a) Provides for the clearance of unloaded cargo from the terminal by contract.
- (b) Provides for the movement of cargo from terminals, depots, or local procurement sources by inland waterways and highway transport.
- (c) Administers contracts made in conjunction with the loading, unloading, terminal clearance, and transport of cargo.

Assignment (Echelon): To a port complex or Sustainment BDE in the UEy, normally attached to a Terminal Battalion.

FOR OFFICIAL USE ONLY (FOUO)

FOR OFFICIAL USE ONLY (FOUO)
Port Management Team

SRC: 55560FG00

Port
Mgmt 2/0/22/24

Mission: To manage, supervise, administer and /or monitor vessel and seaport operations performed by contracted or other host nation (HN) labor forces

Capabilities:

- (a) Provides single ship, dual-shift support for vessel upload or off load operations on a round-the clock (24 hour) basis.
- (b) Provides Supervision and management administration
- (c) Provides dual shift, 24-hour supervision or vessel and port operation. Provides limited (non-sustained) documentation capability for single ship operations, and performs vessel manifesting, stow planning and tracks cargo entering or leaving a port or terminal.
- (d) Receives and process unit equipment lists for redeploying unit equipment and cargo.

Assignment (Echelon): UEY/Port: To a Theater Sustainment Command, normally attached to a Sustainment BDE with a Theater Opening Element.

May be assigned to a Terminal Battalion in a Military Surface Deployment and Distribution Command (MSDDC) Transportation Terminal Group.

FOR OFFICIAL USE ONLY (FOUO)

FOR OFFICIAL USE ONLY (FOUO)

Automated Cargo Documentation Team

SRC: 55560LD00

ACD

0-1-24-25

Mission: To provide automated documentation support for cargo discharged from ships. Specifically, document receipt of cargo and reconcile with the ship's manifest, prepare TCMD for first destination transportation,

and prepare discrepancy reports for the cargo accounting section of the Terminal Battalion.

Capabilities: Document receipt of cargo discharged from up to four ships per day in a fixed port or two ships per day in a LOTS operation.

Assignment (Echelon): UEy or Port Theater Sustainment Command, normally attached to a Terminal Battalion.

FOR OFFICIAL USE ONLY (FOUO)

FOR OFFICIAL USE ONLY (FOUO)

Harbormaster Detachment

SRC: 55587FA00

TRANS HARBOR
MASTER DET

0-2-19-21

DETACHMENT
HQ

OPS SECTION

MAINTENANCE
SECTION

Mission: Provides operational control for vessel and harbormaster operations and related functions within a water terminal operation area, fixed port or logistics-over-the shore (LOTS), on a 24-hour basis

Capabilities:

- (a) Provides the central communications and tracking facility for all watercraft.
- (b) Controls anchorage location, mooring space and berthingspace for all Army watercraft.
- (c) Supports lighterage operations for a four ship fixed port or two ship LOTS operation.

Assignment (Echelon): UEy/Port, JLOTS complex, or Theater Sustainment Command in the UEy, normally attached to a Sustainment BDE or Transportation Terminal Battalion.

FOR OFFICIAL USE ONLY (FOUO)

FOR OFFICIAL USE ONLY (FOUO)
**Transportation Medium Boat
Detachment**

SRC: 55588FA00

**Med Boat
Det 1-0-68-69**

**Det
HQs**

**Boat
Sections**

**Maint
Team**

Mission: To provide waterborne transportation of personnel, cargo and equipment during water terminal, waterborne tactical and joint amphibious, riverine or logistics-over-the-shore (JLOTS) operations.

Capabilities:

Conduct continuous, 24-hour operations, providing and operating landing craft to transport personnel, containers, wheeled/tracked vehicles, and non-containerized cargo during water terminal, waterborne tactical and joint amphibious, riverine or Logistic Over-the-Shore (LOTS) operations.

Assignment (Echelon): UEy/Port: To a port, JLOTS complex, or Theater Sustainment Command in the UEy, normally attached to a Transportation Terminal Battalion.

May be attached to the Navy or Marine Corps to support joint amphibious, riverine or Logistics over-the-Shore (LOTS) operations.

FOR OFFICIAL USE ONLY (FOUO)

FOR OFFICIAL USE ONLY (FOUO)

Trans Watercraft Maintenance Co

SRC: 55613L000

TRANS
W/CRAFT
MAINT CO
55613L000

5-7-194-206

HQ CO 1-HMMWV 2-Trk Cargo	PDN CTRL SECTION	QUALITY CTRL SEC	SUPPLY PLT	SHOP PLT	HULL REPAIR PLT
1-POL Trk 1-Landing Craft			Sup PLT HQ	Shop PLT HQ	Hull Repair HQ
			Stock Ctrl Sec	Machinery Rep Sec 1-Trk Tractor 2-HMMWV	Hull Repair Sec
			Stor & Issue Sec 2-Cargo Trk	Electrical Rep Sec	LCU Crew 1-Landing Craft
			Shop Sup RX Sec		Barge Crew

Mission: To provide direct support maintenance for U.S. Army watercraft.

Capabilities: (Per Section 1 of TOE)

(a) Provides up to 285,200 maintenance man-hours for associated marine maintenance.

(b) Receives, stores, and issues approximately 9,000 line items of marine peculiar repair parts and items required for its mission and by supported units.

(c) Operates a machine shop for fabrication of unique parts.

Assignment (Echelon): UEy/Port: To a port, JLOTS complex, or Theater Sustainment Command in the UEy. Normally attached to a Transportation

Terminal Battalion within a Sustainment Brigade.

FOR OFFICIAL USE ONLY (FOUO)

FOR OFFICIAL USE ONLY (FOUO)
**Transportation Light-Medium
Truck Company**

SRC: 55719F000

Company HQs **5-1-165-171**

Company
Ops Section

LT Trk Plt
2X

LT/Med Trk Plt

Maintenance
Section

PLT
HQ

PLT
HQ

LT Trk Sq
4X

MED Trk Sq

LT Trk Sq

Mission: To provide transportation for the movement of cargo and personnel by motor transport.

Capabilities: On a 24-hour basis provides up to:

- (a) 43 5-ton cargo trucks for transport missions.
- (b) 8 tactical tractor-semi trailer combinations for transport missions.

Assignment (Echelon): UEy or UEx , normally attached to a Motor Trans Battalion or a CSSB.

FOR OFFICIAL USE ONLY (FOUO)

FOR OFFICIAL USE ONLY (FOUO)

Transportation Medium Truck Company (Cargo)

SRC: 55727F100

TRANS MDM
TRUCK COMPANY
(CARGO, UEy)

5-1-166-172

COMPANY HQ

OPERATIONS
SECTION

TRUCK PLT

MAINTENANCE
SECTION

3 X TRUCK
PLT HQ

6 X TRUCK
SQUADS

Mission: To move dry cargo, containers and bulk water (in SMFTs) by motor transport.

Capabilities: Provides an average daily quantity of 52.5 trucks for mission operations

Assignment (Echelon): UEy Theater Sustainment Command, normally attached to a Motor Transport Battalion, or a UEx Sustainment BDE with a Distribution plug, normally attached to a CSSB. Units designated for hauling water are attached to a QM Water Supply Battalion.

FOR OFFICIAL USE ONLY (FOUO)

FOR OFFICIAL USE ONLY (FOUO)

Trans POL Truck Company (7.5K UEy)

SRC: 55727F200

TRANS MDM
TRUCK COMPANY
(POL, UEy)

5-1-163-169

COMPANY HQ

OPERATIONS
SECTION

TRUCK PLT

MAINTENANCE
SECTION

3 X TRUCK
PLT HQ

6 X TRUCK
SQUADS

Mission: To move bulk POL by motor transport.

Capabilities: Provides an average daily quantity of 52.5 trucks for mission operations.

(M915/7500 Gallon Tanker)

Assignment (Echelon): UEy Theater Sustainment Command, normally attached to a a quartermaster petroleum supply battalion.

FOR OFFICIAL USE ONLY (FOUO)

FOR OFFICIAL USE ONLY (FOUO)
Transportation POL Truck Co (5k UEy)

SRC: 55727F300

TRANS MDM
TRUCK CO
(POL, UEy)

5-1-163-169

COMPANY HQ

OPERATIONS
SECTION

TRUCK PLT

MAINTENANCE
SECTION

3 X TRUCK
PLT HQ

6 X TRUCK
SQUADS

Mission: To move bulk POL by motor transport.

Capabilities: Provides an average daily quantity of 52.5 trucks for mission operations. (M915/5000 Gallon Tanker)

Assignment (Echelon): To a UEy Theater Sustainment Command Element, normally attached to a quartermaster petroleum supply battalion.

FOR OFFICIAL USE ONLY (FOUO)

FOR OFFICIAL USE ONLY (FOUO)

Transportation PLS Truck Company

SRC: 55728F300

TRANS MDM
TRUCK CO
(PLS)

5-1-164-170

COMPANY HQ

OPERATIONS
SECTION

TRUCK PLT

MAINTENANCE
SECTION

3 X TRUCK
PLT HQ

6 X TRUCK
SQUADS

Mission: To move dry cargo on flat racks and liquid cargo in tank racks in the UEx area by motor transport.

Capabilities: Provides an average daily quantity of 54 trucks and trailers for mission operations.

Assignment (Echelon): UEx Sustainment Brigade, normally attached to a CSSB.

FOR OFFICIAL USE ONLY (FOUO)

FOR OFFICIAL USE ONLY (FOUO)

Combat HET Co

SRC: 55739I100

**COMBAT HET CO
55739L100**

7-1-291-299

**COMPANY
HQ**

OPNS SEC

TRK PLT HQS

**MAINTENANCE
PLT HQ**

4 X
TRK PLT ORG MAINT DS MAINT

Mission: To relocate heavy maneuver forces on the battlefield. Initial mission is port clearance and force closure. Once the force is closed, mission is for tactical displacement of an intact heavy brigade (2 Armor / 1 Mech) with CS/CSS support slice in one lift. Also performs evacuation mission for equipment to higher levels of repair stations

Capabilities: Provides an average daily quantity of 86 HET systems for mission operations. The three companies per UEx with HVY BDE provide the commander the ability to move an Armor BDE in a single lift.

Assignment (Echelon): UEx Theater Sustainment Command for operational relocation missions such as force closure normally attached to a Motor Transport Battalion, then to a UEx for tactical relocation missions.

FOR OFFICIAL USE ONLY (FOUO)

FOR OFFICIAL USE ONLY (FOUO)

Inland Cargo Transfer Company

SRC: 55819F000

CARGO TRANSFER
COMPANY (ETC)

4 -1 -157 -162

CO HQS OPS SEC DOC SEC CO TRF MAINT
PLTS PLTS SEC

PLT HQS CARGO
SQDS

Mission: To discharge, load and transship cargo at air, rail or truck terminals; to supplement cargo/supply handling operations at combat service support activities in UEy and UEx areas to alleviate cargo backlogs; operates cargo marshalling area as required. ICTC performs as A/DACG.

Capabilities: (Per Section 1 of TOE)

- (a) Operate rail, truck or air terminals on a 24-hour per day basis.
- (b) Operate intermodal terminals in the UEy and UEx Hubs.
- (c) The Company can accomplish one of the following:
 - (1) In rail intermodal or truck terminal operations transship; 2400 short tons of break-bulk cargo or, 600 containers.

(2) In air terminal operations Transship 1500 short tons of breakbulk cargo or 600 containers.

(3) At inland terminals can perpetuate cargo documentation and re-document diverted or reconsigned cargo.

(4) During container operations unit can stuff and unstuff containers. However, this capability degrades other capabilities.

Assignment (Echelon): To the UEy Theater Sustainment Command, normally attached to a Theater Distribution Group or Port Opening Group and UEx , normally attached to a CSSB within the Sustainment Brigade.

FOR OFFICIAL USE ONLY (FOUO)

FOR OFFICIAL USE ONLY (FOUO)

Transportation Heavy Watercraft Company

SRC: 55829L000

TRANS HVY
WATERCRAFT
CO
55829L000

4-21-138-163

CO HQ
1-HMMWV
1-TRK CARGO
1-PICKET BOAT

2X BOAT PLT
10-LANDING CFT
(5 in ea PLT)

MAINT PLT
1-HMMWV

DS MAINT
SEC

Mission: To perform waterborne transportation of personnel, cargo and equipment during intratheater lift, water terminal, waterborne tactical and joint amphibious, riverine or logistics-over-the-shore (JLOTS) operations. .

Capabilities: (Per Section 1 of TOE)

(a) On a 24 hour basis, provide up to 8 landing craft (LCU-2000) for transport missions.

(b) Each LCU-2000 can move 5 M-1 Main Battle Tanks or 24 ea. 20' containers.

(c) Transport 2,800 short tons of cargo consisting of vehicles, containers, and/or general cargo.

(d) Task vessels are self deployable when this unit is equipped with LCU-2000s.

Assignment (Echelon): UEy/Port, JLOTS complex, or Theater Sustainment Command in the UEy, normally attached to a Transportation Terminal Battalion.

FOR OFFICIAL USE ONLY (FOUO)

FOR OFFICIAL USE ONLY (FOUO)

Seaport Operations Company

SRC: 55838F000

~~SEAPORT OPS
COMPANY~~

4 -1 -200 -205

~~CO HQS OPS SEC~~

~~MARSHALL
AREA SEC~~

~~DOC SEC~~

~~SOC PLT~~

~~MAINT SEC~~

~~PLT HQS~~

~~SOC SQDS~~

Mission: Perform seaport terminal service operations to discharge and load containerized cargo and wheeled/tracked vehicles in fixed seaports or in logistics-over-the-shore (LOTS) sites.

Capabilities: (Per Section 1 of TOE)

(a) In a fixed port: discharge or load up to 375 containers, 750 Wheeled/tracked vehicles, or 1875 STONs of breakbulk cargo per day.

(b) In a LOTS operation: discharge or load up to 150 containers, or 750 STONs of breakbulk cargo per day, or 450 wheeled/tracked vehicles.

Assignment (Echelon): To port or JLOTS complex in the UEy, Theater Sustainment Command, or a Sustainment BDE with a Theater Opening

Element, normally attached to a Transportation Terminal Battalion.

FOR OFFICIAL USE ONLY (FOUO)

FOR OFFICIAL USE ONLY (FOUO)

Modular Causeway Company

SRC: 55848F000

Trans Mod
Causeway
Company

5-1-174-180

Co HQs

Causeway
Plt

2X RO/RO
Discharge
Plt

Ops
Sec

Beach
Spt

FC Main
Segment

FC-SLWT
Segment

Causeway
Ferry

RO/RO
Discharge
Platf Main

RO/RO
Discharge
Platf SLWT

Mission: To provide movement support for cargo and equipment during

intra-theater lift, water terminal, waterborne tactical and joint amphibious, riverine and logistics over the shore (JLOTS) operations.

Capabilities: (Per Section 1 of respective TOE)

(a) One Floating Causeway (FC) pier consisting of from 1 to 17 non-powered causeway sections (CSNP) (up to 1,200 feet in length), with a dry bridge for the discharge of cargo and equipment from lighters directly to an unimproved shoreline or degraded fixed port facility.

(b) One Causeway Ferry (CF) consisting of one powered causeway section (CSP) and up to three non-powered causeway sections (CSNP) for moving rolling stock, break bulk, containerized cargo from ship to shore.

(c) Two Roll-On/Roll-Off Discharge Platforms (RRDF) consisting of up to 18 non-powered causeway sections (CSNP) each that interfaces between RO/RO ships and lighterage for the rapid discharge of rolling stock. (d) Several variants of causeway section configuration to meet mission needs.

Assignment (Echelon): UEy/Port, JLOTS complex, or Theater Sustainment Command in the UEy, normally attached to a Transportation Terminal Battalion. May be attached to the U.S. Navy or U.S. Marine Corps to support joint amphibious, riverine or logistics over the shore (JLOTS) operations.

FOR OFFICIAL USE ONLY (FOUO)

FOR OFFICIAL USE ONLY (FOUO)
Floating Craft Company

SRC: 55889F000

**Floating
Craft
Company**

2-10-75-87

**Detachment
Headquarters**

**Mission
Support
Section**

**Small Tug
Crews X 2**

**Large Tug
Crew**

**Floating
Crane**

**Fuel
Barge**

Mission: To perform Floating Craft and Harborcraft operations during intratheater lift, water terminal, waterborne tactical and jointamphibious, riverine or logistics over the shore (JLOTS) operations.

CAPABILITIES: (Per Section 1 of respective TOEs)

(a) One Large Tug for ocean and coastal towing, salvage, and recovery operations, general purpose harbor duties, and firefighting service.

(b) Two Small Tugs for tug services in support of water terminal and inland waterway operations.

(c) One Floating Crane to load and discharge heavy lift cargo that is beyond the capacity of ship's gear.

(d) Barges to transport up to 324 short tons of deck loaded dry cargo or 93,000 gallons of bulk fuel. Capable of serving as a refueling point for Army

Watercraft operating in the area.

Assignment (Echelon): (UEy/Port) To a port, JLOTS complex, or Theater Sustainment Command in the UEy, normally attached to a Transportation Terminal Battalion.

FOR OFFICIAL USE ONLY (FOUO)

FOR OFFICIAL USE ONLY (FOUO)

Theater Support Vessel Detachment

SRC: 55888F000

THEATER
SUPPORT VESSEL 0-8-23-31

Mission: To perform high-speed waterborne transportation of personnel, cargo, and equipment, including fully operational combat teams, during intratheater lift, waterborne tactical and joint amphibious or, riverine

operations.

Capabilities:

- (a) Self deployable/Self sustaining for a period of 30 -45 days.
- (b) This vessel can transport 1,250 STONS of unit equipment or sustainment supplies, and 360 combat equipped troops in a single lift.

Assignment (Echelon): To a port, JLOTS complex, or Theater Sustainment Command in the UEy, normally attached to a Sustainment BDE with a Theater Opening Element or Transportation Terminal Battalion.

FOR OFFICIAL USE ONLY (FOUO)

FOR OFFICIAL USE ONLY (FOUO)

Transportation Railway Operating Company

SRC: 55917L000

5-0-117-122

HQs

	HQ		Trans Op Plt		Railway Equip Maint Plt		Maint of Way Plt	
Food Svc	Maint Sec	Train Mvmt Sec	Train Crews X8		Railway Equip Maint Sq X2	Railway Equip Maint Spt	Maint of Way Sq X2	Maint of Way Spt

Mission: To operate rail locomotives and trains, maintain and repair railtrack, and perform inspection and organizational maintenance on rolling stock and diesel-electric locomotives.

Capabilities:

- (a) Operates a rail division of approximately 40 -60 miles.
- (b) Operates locomotives and trains for yard, road, and incidental switching operations.
- (c) Provides eight train crews (daily) for road service and for yard, port, and rail terminal operations including switching and train make-up operations.
- (d) Maintains and repairs track and roadbeds.
- (e) Performs maintenance and inspection of 16 locomotives and 320 railcars
- (f) Provides rail equipment maintenance contact teams.
- (g) Provides wrecked train support.
- (h) Dispatches all trains, operates railway stations and signal towers

Assignment (Echelon): UEy Theater Sustainment Command, normally attached to Railway Bn within a Sustainment Brigade.

FOR OFFICIAL USE ONLY (FOUO)

FOR OFFICIAL USE ONLY (FOUO)

OD Companies / Platoons / Teams

SRC: 09 & 43

FOR OFFICIAL USE ONLY (FOUO)

FOR OFFICIAL USE ONLY (FOUO)

**Headquarters Modular Ammunition
Ordnance Company**

SRC: 09408L000

HQ

MODULAR AMMUNITION

2-1-27-30

CO
HQS

FIELD
FEEDING
SEC

Mission : Provides command, control, administrative, planning and logistical support for modular ammunition platoons.

Capabilities:

- (a) Command And Control For Two To Five Modular Ammunition Platoons
- (b) Provides Construction Equipment Support For MaintenanceOf Ammunition Storage Sites.
- (c) Welding Support To Assigned Platoons
- (d) Provides Direct Support For Fire Fighting Within The Supported Platoons Ammunition Storage Areas.
- (e) Dining Facility Support To Assigned Units

Assignment (Echelon): Assigned to:
Ammo Bn SRC 09666L when designated Theater Storage Area
Ammo Bn SRC 09466L when designated to UEy Storage Area
CSSB when designated UEx Ammunition Supply Point

6-8
FOR OFFICIAL USE ONLY (FOUO)

FOR OFFICIAL USE ONLY (FOUO)

Ammo Medium Lift Platoon

SRC: 09503LA00

Ammo

Medium Lift

1-1-45-47

Platoon

..

PLT
HQS

RTFL
Section

Tech
Support
Section

Maint
Section

Rear
ATP
Section

Mission: Receives, configures, inspects, manage issues, ships and retrogrades ammunition utilizing the palletized load system.

Capabilities:

Operates independently or as part of a larger unit.

Total storage capability for this platoon is approximately 1,273 short tons (ST) of the designated level of the theater CLV storage policy. Operates one (1) ASP and one third (1/3) of a Rear Ammunition Transfer Point (ATP). This platoon will combine with two other medium lift platoons in the rear area of a division.

Daily Ammunition Lift Capability: in a CSA	After providing 1/3 of a Rear ATP	When operating or TSA and no
Rear ATP msn		
Receive	376 ST	507 ST
Store/Re-Configure	376 ST	507 ST
Issue	376 ST	507 ST
Total Lift Capability	1128 ST	1521 ST

Assignment: Assigned to: Ammo Co SRC 09408L

FOR OFFICIAL USE ONLY (FOUO)

FOR OFFICIAL USE ONLY (FOUO)

Ammo Heavy Lift Platoon

SRC: 09503LB00

Ammo
Heavy Lift
Platoon
1-1-51-53

PLT
HQS

RTFL
Section

Crane
Section

..
Tech
Support
Section

Maint
Section

Mission: Receives, ships, configures, inspects, manage, issues, ships and retrogrades containerized ammunition. Operates independently or as part of a larger unit. **Mission:**

Capabilities:

Storage capability of approximately 11,363 of the designated level of the theater Class V stockage policy.

Direct support maintenance and limited modification of conventional ammunition, components, and packing containers.

Emergency destruction of unserviceable conventional ammunition.

Assistance to Explosive Ordnance Disposal (EOD) personnel in the routine destruction of unserviceable conventional ammunition.

Daily Ammunition Lift Capability:

Receive	886 ST
Store/Re-Configure	886 ST
Issue	886 ST
Total Lift Capability	2657 ST

Assignment: Assigned to Ammo Co SRC 09408L

FOR OFFICIAL USE ONLY (FOUO)**FOR OFFICIAL USE ONLY (FOUO)**
Ordnance Company (EOD)**SRC: 09447A000**

ORD CO

1-0-22-23

EOD

CO
HQSSAFETY
TRNG
OPS
SECRESPONSE
SEC

Mission : To reduce or eliminate the hazards of munitions and explosive devices. Provide explosive ordnance disposal (EOD) support to federal, state, and local agencies and foreign governments

Capabilities:

(a) Explosive Ordnance Disposal (EOD) service on an area basis for 50 routine incidents per day (routine is defined as less than 2 hours). (Based on 5 light teams per company x 10 routine incidents per team per day.)

(b) Explosive Ordnance Disposal (EOD) service on an area basis for 8 non-routine incidents per day (non-routine is defined as more than 2 hours). (Based on 2 heavy teams per company x 4 non-routine incidents per team per day.)

(c) Command and control for activities conducted by response teams.

(d) Receipt, prioritization, and dispatch of EOD response teams.

(e) Two heavy teams to neutralize hazards resulting from domestic or foreign conventional, nuclear, chemical biological ordnance, and improvised explosive devices.

(f) Five light teams to neutralize hazards resulting from domestic or foreign conventional and improvised explosive devices

Assignment: To Headquarters and Headquarters Detachment, Ordnance, Explosive Ordnance Disposal (EOD) Battalion, TOE 09446L000.

FOR OFFICIAL USE ONLY (FOUO)

FOR OFFICIAL USE ONLY (FOUO)

Ordnance Company (Ammunition) (WHNS)

SRC: 09574LB00

ORD CO
(AMMO)
(WHNS)

2-1-13-16

DET
HQS

CON
SEC

QA / QC
SEC

Mission: To provide operational control over U.S owned ammunition stocks being received, stored, warehoused, and issued by Host Nation Ammunition units to U.S. forces combat units.

Capabilities:

- (a) Provides the necessary expertise required to perform stock accountability, stock status reporting, and quality assurance/quality control functions for U.S. owned ammunition stocks being received, stored, warehoused, and issued by Host Nation Ammunition Units.
- (b) Required coordination for maintenance support for U.S. equipment operated by the host nation unit.
- (c) Coordination for operational tasking with the battalionliaison team

Assignment: To an Ordnance Battalion, Ammunition (WHNS).

FOR OFFICIAL USE ONLY (FOUO)

ORDNANCE EXPLOSIVE ORDNANCE Disposal (EOD) Company (CONUS Support)

SRC: 09747L000

ORDNANCE EXPLOSIVE
ORDNANCE DISPOSAL
(EOD) COMPANY (CONUS
SUPPORT)

2-0-29-31

COMMAND
SECTION

OPERATIONS
SECTION

RESPONSE
SECTION

Mission : To reduce or eliminate the hazards of munitions and explosive devices. Provide explosive ordnance disposal (EOD) support to federal, state, and local agencies.

Capabilities:

- (a) provides explosive ordnance disposal (EOD) service on an area basis

for a maximum routine incident (a routine incident is defined as an incident that averages no more than two hours) response capability of 120 incidents per day.

(b) provides twelve light teams to neutralize hazards resulting from domestic or foreign conventional and improvised explosive devices.

(c) Command and control of all activities conducted by the response teams.

(d) Coordination of EOD operations.

Assignment: Toa theater and normally attached to Headquarters and Headquarters Detachment, Ordnance, Explosive Ordnance Disposal (EOD) Battalion, TOE 09446L000

FOR OFFICIAL USE ONLY (FOUO)

FOR OFFICIAL USE ONLY (FOUO)
Collection & Classification Company

SRC: 43439F000

COLLECTION &
 CLASSIFICATION
 COMPANY

5-3-150

COMPANY HQ	MAINTENANCE CONTROL PLATOON HQ	DISASSEMBLY PLATOON	STORAGE & SHIPPING PLATOON	HEAVY LIFT & EVAC SECTION	FORWARD COLLECTION PLATOON
MAINTENANCE CONTROL & PLATOON HQ	IDENT & INSPECTION SECTION			FORWARD COLLECTION PLATOON HQ	2 DISTRIBUTION DET HQ HUB TEAMS
DISASSEMBLY	EQUIPMENT	ARMAMENT			6 WPN RECOVERY TMS

BLY
PLATOON
HQ

DISASSEM
BLY
SECTION

DISASSEMBLY
SECTION

STORAGE &
SHIPPING
PLATOON HQ

PACKING &
CRATING
SECTION

TEMP
STOR &
SHIPPING
SECTION

Mission: To establish & operate a collection and classification facility for the receipt, inspection, segregation, disassembly, preservation, & disposition of serviceable and unserviceable Class VII and IX materiel and similar foreign materiel (except items peculiar to cryptographic materiel, missile systems, aircraft, airdrop equipment, drones, and medical materiel).

Capabilities:

(a) Disassembly of end items that have been declared economically repairable and classification of components and assemblies for repair, return to supply stocks, or disposal (except items peculiar to missile systems, aircraft, drones, cryptographic, and medical materiel).

(b) Segregation, preservation, and packaging of selected items of materiel and related components for return to supply channels for evacuation and technical intelligence evaluation.

(c) Operation of a cannibalization point, when authorized by higherheadquarters, for items processed by the unit.

(d) 2 Distribution Hub Teams that perform vital maintenance inspection functions at distribution hubs along the distribution pipeline. Monitors the distribution system, expedites the timely and ultimate return to service of serviceable Class VII and IX materiel; and, at the direction of the MMC, expedites this materiel to the appropriate maintenance unit or activity. materiel).

Assignment: UEy, normally attached to a CSSB.

FOR OFFICIAL USE ONLY (FOUO)

FOR OFFICIAL USE ONLY (FOUO)

Area TMDE Team

SRC: 43547AH00

Area
TMDE **0-0-7-7**
Support

Mission: To calibrate and repair general purpose and selected special purpose test, measurement, and diagnostic equipment (TMDE).

Capabilities: At Level 1, this unit provides both mobile and fixed site calibration and repair support of TMDE.

Assignment (Echelon): To a Sustainment Brigade UEx.

FOR OFFICIAL USE ONLY (FOUO)

FOR OFFICIAL USE ONLY (FOUO)

Support Maintenance Company HQS

SRC: 43573FA00

SUPPORT
MAINT
COMPANY
HQ

3-1-46-50

..

CO
HQS

MAINT
CONTROL
SECTION

SERVICE
REC

Mission: To command and control assigned cellular platoons, modules, and teams performing field maintenance (on-system repair and replacement) operations.

Capabilities:

(a) Command, control, and supervision of subordinate elements performing field maintenance functions.

(b) Span of control of the company headquarters element normally will not exceed 240 personnel

Assignment:

To a Support Maintenance Company (Recap), 43470F000. SMC is normally assigned/attached to a CSSB.

FOR OFFICIAL USE ONLY (FOUO)

FOR OFFICIAL USE ONLY (FOUO)

Automotive/Armament

Maintenance Platoon

SRC: 43573FB00

	Auto/Armt	
	Maint	1-2-40-43
	Platoon	
		..
	Track/ Automotive	Armament
PLT	Maint	Maint
HQS	Section	Section

Mission: To provide field maintenance (on-system repair or replacement) of automotive track and wheeled vehicles and armament turret and fire control systems and return to the user.

Capabilities:

124,647 man-hours per year of automotive and armament repair capability at UEx.

141,735 man-hours per year of automotive and armament repair capability at UEy.

Assignment: To a Support Maintenance Company (Recap), 43470F000.

FOR OFFICIAL USE ONLY (FOUO)

FOR OFFICIAL USE ONLY (FOUO)

Track Vehicle Maint Module

SRC: 43573FC00

Track

Vehicle

0-0-9-9

Maint Mod

Mission: To provide supplemental track vehicle maintenance capacity to an automotive/armament platoon.

Capabilities:

30,224 man-hours per year of track vehicle repair capability at UEx.

34,680 man-hours per year of track vehicle repair capability at UEy.

Assignment: To a Support Maintenance Company (Recap), 43470F000.

FOR OFFICIAL USE ONLY (FOUO)

FOR OFFICIAL USE ONLY (FOUO)

Wheeled Vehicle Maint Module

SRC: 43573FD00

Wheeled
Vehicle **0-0-9-9**
Maint Mod

Mission: To provide supplemental heel vehicle maintenance capacity to an automotive/armament platoon.

Capabilities:

30,224 man-hours per year of wheel vehicle repair capability at UEx.
34,680 man-hours per year of wheel vehicle repair capability at UEy.

Assignment: To a Support Maintenance Company (Recap), 43470F000.

FOR OFFICIAL USE ONLY (FOUO)

FOR OFFICIAL USE ONLY (FOUO)

Ground Support Equipment Maintenance Platoon

SRC: 43573FG00

GSE

Maint

1-1-25-27

Platoon

PLT
HQS

Maint
Section

Mission: To provide field maintenance (on-system repair or replacement) of ground support equipment (power generation, utility, construction, quartermaster, and chemical equipment) and return to the user.

Capabilities:

83,116 man-hours per year of GSE repair capability at UEx.

94,490 man-hours per year of GSE repair capability at UEy.

Assignment: To a Support Maintenance Company (Recap), 43470F000.

FOR OFFICIAL USE ONLY (FOUO)

FOR OFFICIAL USE ONLY (FOUO)

GSE Maintenance Module

SRC: 43573FH00

GSE
Maint 0-0-9-9
Module

Mission: To provide supplemental ground support equipment maintenance capacity to a ground support equipment platoon.

Capabilities:

34,002 man-hours per year of GSE repair capability at UEx.

38,655 man-hours per year of GSE repair capability at UEy.

Assignment: To a Support Maintenance Company (Recap), 43470F000.

FOR OFFICIAL USE ONLY (FOUO)

FOR OFFICIAL USE ONLY (FOUO)

Electronic Equipment Maintenance Platoon

SRC: 43573FI00

Elec
Equip Mt **1-1-32-34**
Platoon

..

	Radio/	Comp/Auto	Mwave/	SP Elect/
PLT	COMSEC	System	Radar	Wire
HQS	Section	Repair	Repair	Section

Mission: To provide field maintenance (on-system repair or replacement) of communications and electronic equipment and return to the user.

Capabilities:

90,672 man-hours per year of electronic repair capability at UEy.

103,080 man-hours per year of electronic repair capability at UEy.

Assignment: To a Support Maintenance Company (Recap), 43470F000.

FOR OFFICIAL USE ONLY (FOUO)

FOR OFFICIAL USE ONLY (FOUO)

COMMEL Maintenance Module

SRC: 43573FJ00

COMMEL

Maint

0-0-3-3

Module

Mission: To provide supplemental communications electronic maintenance capacity to an electronic equipment maintenance platoon.

Capabilities:

11,334 man-hours per year of 94E/COMSEC/Radio Equip Rpr repair capability at UEx.

12,885 man-hours per year of 94E/COMSEC/Radio Equip Rpr repair capability at UEy.

Assignment: To a Support Maintenance Company (Recap).

FOR OFFICIAL USE ONLY (FOUO)

FOR OFFICIAL USE ONLY (FOUO)

Special Electronic Devices Maintenance Module

SRC: 43573FK00

Special
Elect Dev 0-0-3-3
MT Module

Mission: To provide supplemental special electronic devices maintenance capacity to an electronic equipment maintenance platoon.

Capabilities:

11,334 man-hours per year of 94F/Sp Elect Dev Repairer repair capability at

UEx.

12,885 man-hours per year of 94F/Sp Elect Dev Repairer repair capability at

UEy.

Assignment: To a Support Maintenance Company (Recap), 43470F000.

FOR OFFICIAL USE ONLY (FOUO)

FOR OFFICIAL USE ONLY (FOUO)

Radar / GBS Maintenance Module

SRC: 43573FL00

Radar/
GBS

0-0-4-4

Maint

Mission: To provide supplemental special electronic devices maintenance capacity to an electronic equipment maintenance platoon.

Capabilities:

11,334 man-hours per year of 94F/Sp Elect Dev Repairer repair capability at UEx.

12,885 man-hours per year of 94F/Sp Elect Dev Repairer repair capability at UEy.

Assignment: To a Support Maintenance Company (Recap), 43470F000.

FOR OFFICIAL USE ONLY (FOUO)

FOR OFFICIAL USE ONLY (FOUO)

Missile Maintenance Platoon Headquarters

SRC: 43573FM00

Missile

Maint

1-0-1-2

Plt HQs

Mission: To provide command and control for missile system maintenance teams.

Capabilities: Provides command and control for missile system support teams: TOE 43573FN00, LCMS Maintenance Team; TOE 43573FO00, MLRS Maintenance Team; and TOE 43573FP00, ADA Maintenance Team, which may co-locate with supported unit.

Assignment: To a Support Maintenance Company (Recap), 43470F000.

FOR OFFICIAL USE ONLY (FOUO)

FOR OFFICIAL USE ONLY (FOUO)

LCMS Maintenance Team

SRC: 43573FN00

LCMS

Maint

0-1-14-15

Team

Mission: To provide on site field maintenance (on-system repair or replacement) of land combat electronic missile systems and return to user.

Capabilities:

49,114 man-hours per year of 94A/LC Elect Msl Sys/TFTS Rep repair capability at UEx.

55,835 man-hours per year of 94A/LC Elect Msl Sys/TFTS Rep repair capability at UEy.

Assignment: To a Support Maintenance Company (Recap), 43470F000

FOR OFFICIAL USE ONLY (FOUO)

FOR OFFICIAL USE ONLY (FOUO)

MLRS Maintenance Team

SRC: 43573FO00

MLRS

Maint

0-1-26-27

Team

Mission: To provide on-site field maintenance (on-system repair or replacement) in support of a Corps multiple launch rocket systems (MLRS) battalion.

Capabilities: Provides the essential direct support (DS) maintenance requirements for one Corps MLRS field artillery battalion through habitual, on-site contact maintenance support and has capability to requisition repair parts using its own UIC or derivative UIC.

Assignment: To a Support Maintenance Company (Recap), 43470F000

FOR OFFICIAL USE ONLY (FOUO)

FOR OFFICIAL USE ONLY (FOUO)

ADA Maintenance Team

SRC: 43573FP00

ADA

Maint

Team

0-1-7-8

Mission: To provide on-site field maintenance (on-system repair or replacement) of air defense artillery weapon systems.

Capabilities:

15,112 man-hours of 35T/AVENGER System Rep and 3,778 man-hours 52C/Utilities Equipment Rep repair capability per year at UEx.

17,180 man-hours of 35T/AVENGER System Rep and 4,295 man-hours 52C/Utilities Equipment Rep repair capability per year at UEy.

Assignment: To a Support Maintenance Company (Recap), 43470F000

FOR OFFICIAL USE ONLY (FOUO)

FOR OFFICIAL USE ONLY (FOUO)

Track Vehicle Recovery Team

SRC: 43573FQ00

Track
Veh Rec 0-0-2-2
Team

Mission: To provide tracked vehicle recovery support.

Capabilities: At Level 1, this unit provides tracked vehicle recovery capability.

Assignment: To a Support Maintenance Company (Recap), 43470F000

FOR OFFICIAL USE ONLY (FOUO)

FOR OFFICIAL USE ONLY (FOUO)

Component Repair Company HQs

SRC: 43583FA00

COMPONENT
REPAIR
COMPANY HQ

2-2-57-61

CO

MAINTENANCE
CONTROL

SHOP
SUPPLY

ALLIED
TRADE

Mission: To command and control assigned cellular platoons, modules, and teams performing sustainment maintenance (off-system repair and return to the supply system) operations.

Capabilities:

(a) Command, control, and supervision of subordinate platoons performing sustainment maintenance functions. The span of control of the company headquarters element will not exceed 176 personnel.

(b) Unit administration, supply, wheeled vehicle recovery, and field feeding support for up to 176 assigned personnel.

Assignment: To a Component Repair Company (Recap), 43480F000.

FOR OFFICIAL USE ONLY (FOUO)

FOR OFFICIAL USE ONLY (FOUO)

Automotive Repair Platoon, CRC

SRC: 43583FB00

Auto
Repair 1-1-33-35
Platoon

PLT
HQS Auto
 Repair
 Section

Mission: To provide sustainment maintenance (off system component repair) of automotive vehicle system (tracked and wheeled) in support of the supply system.

Capabilities:

109,562 man-hours per year of automotive component repair capability at UEx.

124,555 man-hours per year of automotive component repair capability at UEy.

Assignment: To a Component Repair Company (Recap), 43480F000.

FOR OFFICIAL USE ONLY (FOUO)

FOR OFFICIAL USE ONLY (FOUO)

GSE Repair Platoon, CRC

SRC: 43583FC00

GSE

Repair

1-1-24-26

Platoon

GSE

PLT
HQS

Repair

Section

Mission: To provide sustainment maintenance (off system component repair) of ground support equipment (power generation, utility, construction, quartermaster, and chemical equipment) in support of the supply system.

Capabilities:

79,338 man-hours per year of GSE and engineer equipment repair capability at UEx.

90,195 man-hours per year of GSE and engineer equipment repair capability at UEy.

Assignment: To a Component Repair Company (Recap), 43480F000.

FOR OFFICIAL USE ONLY (FOUO)

FOR OFFICIAL USE ONLY (FOUO)

Armament Repair Platoon, CRC

SRC: 43583FD00

Armament

Repair

1-1-21-23

Platoon

Armament

PLT
HQS

Repair

Section

Mission: To provide sustainment maintenance (off system component repair) of armament and fire control equipment in support of the supply system.

Capabilities:

68,004 man-hours per year of armament equipment repair capability at UEx.

77,310 man-hours per year of armament equipment repair capability at UEy.

Assignment: To a Component Repair Company (Recap), 43480F000.

6-3
FOR OFFICIAL USE ONLY (FOUO)

FOR OFFICIAL USE ONLY (FOUO)
Electronic Repair Platoon, CRC

SRC: 43583FE00

Electronic
Repair **1-2-56-59**

PLT	Radar / COMSEC	Comp / Auto System Repair	MWave / Radar Repair	IEW Equip Repair	SP Elect / Wire System Repair	Automated Test Repair
HQ	Repair					

Mission: To provide sustainment maintenance (off-system component repair) of communications and electronic equipment in support of the supply system.

Capabilities:

211,568 man-hours per year of electronic equipment repair capability at UEx.

240,520 man-hours per year of electronic equipment repair capability at UEy.

Assignment: To a Component Repair Company (Recap), 43480F000.

FOR OFFICIAL USE ONLY (FOUO)

FOR OFFICIAL USE ONLY (FOUO)

Automotive Electrical Repair Team (Lt)

SRC: 43583FF00

Auto
Elect **0-0-15-15**
Repair

Mission: To provide sustainment maintenance (off-system component repair) of automotive electrical equipment in support of the supply system.

Capabilities: -At Level 1, this unit provides annual manyears/manhours (MYRS/MHRS) of maintenance based on the availability factor of 3778 manhours per maintainer at Corps *UEx* or 4295 man-hours per maintainer at echelons above corps (EAC) *UEy* .

MOS	TITLE	MYRS	UEx MHRS	UEy MHRS
---	-----	-----		
63B	Wheeled Veh Mech	14	52,892	60,130

Assignment (Echelon): To a Component Repair Company (CRC),TOE 43480F000

FOR OFFICIAL USE ONLY (FOUO)

FOR OFFICIAL USE ONLY (FOUO)
Component Repair Platoon HQs, CRC

SRC: 43583FG00

Electronic 1-2-4-7
Repair

Mission: Provide sustainment maintenance (off-system repair and return to the supply system) base platoon capable of providing critical Fuel and Electric (F&E) IFTE and DSESTS LRU type items for Brigades operating in the UEx tactical battle space.

Capabilities: (Per Draft URS)

-Command and control and workload DSESTS, F&E, Laser Designator, Night

Sight, and BSTF support teams.

- Resident SAMS-1 capability to conduct repair and return to the supply system former Repairable Exchange functions.
- Can dispatch teams forward to Brigade AOs based on METT-TC to conduct sustainment repairs.

Assignment (Echelon): To a unit performing field maintenance, normally a Support Maintenance Company SMC HQ, 43573FA operating in the Sustainment Brigade within the UEx AO. It can also attach to a Component Repair Company operating in UEy AO.

FOR OFFICIAL USE ONLY (FOUO)

FOR OFFICIAL USE ONLY (FOUO)

DSESTS/LRU Repair Team

SRC: 43583FH00

DSESTS/

LRU

0-0-4-4

Repair

Mission: Provide sustainment maintenance (off-system repair and return to the supply system) for LRUs requiring DSESTS support for Brigades operating in the UEx tactical battle space.

Capabilities: -Provides DSESTS/LRU support for a Heavy Brigade Combat Team.

Assignment (Echelon): To a unit performing field maintenance, normally a Support Maintenance Company SMC HQ, 43573FA operating in the Sustainment Brigade within the UEx AO. It can also attach to a Component Repair Company operating in UEy AO.

FOR OFFICIAL USE ONLY (FOUO)

FOR OFFICIAL USE ONLY (FOUO)

Laser Designator Support Team

SRC: 43583FI00

Laser
Designator 0-0-2-2
Support

Mission: Provide sustainment maintenance (off-system repair and return to the supply system) for laser designators for Brigade Combat Teams operating in the UEx tactical battle space.

Capabilities: -Provides laser designator support for one to four Brigade Combat Teams.

Assignment (Echelon): To a unit performing field maintenance, normally a Support Maintenance Company SMC HQ, 43573FA operating in the Sustainment Brigade within the UEx AO. It can also attach to a Component Repair Company operating in UEy AO.

FOR OFFICIAL USE ONLY (FOUO)

FOR OFFICIAL USE ONLY (FOUO)

Night Sight Support Team

SRC: 43583FJ00

Night

Sight Support

Mission: Provide sustainment maintenance (off-system repair and return to the supply system) for night sights for Brigade Combat Teams operating in the UEx tactical battle space.

Capabilities: -Provides laser designator support for one to four Brigade Combat Teams.

Assignment (Echelon): To a unit performing field maintenance, normally a Support Maintenance Company SMC HQ, 43573FA operating in the Sustainment Brigade within the UEx AO. It can also attach to a Component Repair Company operating in UEy AO.

FOR OFFICIAL USE ONLY (FOUO)

FOR OFFICIAL USE ONLY (FOUO)

BSTF Support Team

SRC: 43583FK00

BSTF
Support 0-0-5-5

Mission : To augment the Direct Support (DS) and General Support (GS) maintenance units in the automated testing, diagnostic, and repair capability of electronic equipment.

Capabilities:

Provides on a 24 hour basis, 5,840 Annual Test and Diagnostic Hours (AT&DH) of support.

At the DS level: Test, diagnostic and repair, support for Line Replaceable

Units (LRUs) down to Shop Replaceable Units (SRUs) in organization to determine disposition.

At the GS level: Capabilities are expanded to include the test, diagnostic and repair of SRUs.

Assignment: Assigned to UEx or UEy maintenance units with organic base shop test facility capability, in support of a DS or GS sustainment maintenance electronic repair mission or a Component Repair Platoon HQ.

FOR OFFICIAL USE ONLY (FOUO)

FOR OFFICIAL USE ONLY (FOUO)

Air Traffic Services Support Maint Co

SRC: 43613A000

ATS
SUPPORT
MAINT
COMPANY

1-2-71-74

CO HQ

COMNAV
REPAIR
PLATOON

FORWARD
SUPPORT
PLATOON

SUPPLY
OPS
SEC

CO HQ

QA / QC

COMNAV
REPAIR

FORWARD

SEC

SEC

PLATOON

SUPPORT
PLATOON HQSUPPLY
SECAUTO
MAINT
SECCO REP
SECFORWARD
SUPPORT
SEC

Mission: To provide air traffic services support maintenance to three battalions of the Air Traffic Services force structure throughout the world and directly supply tactical, ATC peculiar, repair parts to these organizations.

Capabilities:

(a) Air Traffic Services support maintenance to three battalions of the new air traffic services force structure, supporting approximately one-half of the total force structure requirement.

(b) Air traffic services materiel maintenance contact teams forward as required by the new ATS Force Structure, supporting approximately one-half (Three Battalions) of the total force structure requirement.

(c) ATS peculiar repair parts supplied directly to three battalions of the ATS force supporting approximately one-half of the total force structure requirement.

Assignment (Echelon): Separate Company within the Air Traffic Services force structure, and may be assigned as required to support the worldwide distribution of ATS assets. May be assigned or attached to the ATS Group and located in the COMMZ in the event of full mobilization.

FOR OFFICIAL USE ONLY (FOUO)

FOR OFFICIAL USE ONLY (FOUO)
Ordnance (Maintenance) Company

(Sustainment), Theater Network Cmd-- Army

SRC: 43648A000

ORD MAINT
CO TSC-A **3-4-77-84**

COMPANY
HQ

MAINTENANC
E CONTROL
SECTION

TCOR

ATE REPAIR
SECTION

3 GSE
REPAIR
SECTION

UNIT MAINT
SECTION

THEATER
SIGNAL MAINT
PLT
43568AA00

THEATER
SIGNAL MAINT
PLT
43568AA00

THEATER
SIGNAL MAINT
PLT
43568AA00

Mission: To provide communications-electronics general support (GS) maintenance for a theater army signal *network* command.

Capabilities:

(a) Command and control for three signal support maintenance platoons, TOE 43568LA00.

- (b) Automated test equipment diagnostics and repair facility.
- (c) Limited direct support maintenance capability for ground support equipment for each signal brigade.

Assignment: To a Sustainment BDE, normally attached to a headquarters and headquarters detachment, signal battalion (DS), TOE 11625.

FOR OFFICIAL USE ONLY (FOUO)

FOR OFFICIAL USE ONLY (FOUO)
Maintenance Platoon, TNC-A

SRC: 43568AA00

Theater Signal
Maintenance
Platoon **1-0-33-34**

PLT

MAINTENCE

TECH

C-E

HQ

~~CONTROL~~~~SUPPLY~~REPAIR
SECTION

Mission: To provide dedicated sustainment maintenance and Class IX supply support for unique TRITAC, mobile subscriber equipment (MSE), computers, and conventional communications/electronics end items and components for a Theater Signal Network Command-Army, Signal Brigade.

Capabilities: 15,540 man-hours per year of electronic equipment repair capability at UEy.

Assignment: To a Theater Signal Network Maintenance Company, TOE 43648A000; normally attached to a Headquarters and Headquarters Detachment, Signal Battalion (DS), TOE 11625A.

FOR OFFICIAL USE ONLY (FOUO)

FOR OFFICIAL USE ONLY (FOUO)

QM Companies

SRC: 10 & 42

FOR OFFICIAL USE ONLY (FOUO)

FOR OFFICIAL USE ONLY (FOUO)
QM Field Service Co (Modular)

SRC: 10414L000

QM
Fld Svc

4-0-118-122

Co HQ

SLCR
SLCR
Plt
Plt

SLCR
SLCR
Sec
Cst HQ

Mission : To provide DS shower, laundry, and clothing repair (SLCR) support for approximately 21,000 troops on an area basis.

Capabilities: (Per Section 1 of TOE)

- (a) Laundry services totaling 315,000 lbs of laundry per week based on 15 lbs per soldier per week in support of 21,000 troops.
- (b) Each SLCR section can support 500 troops per day/3500 troops per week.
- (c) Distribution for individual laundry with organic distribution assets providing 24 hour laundry service.
- (d) Limited light textile repair.
- (e) Unit level maintenance on organic equipment.
- (f) Food service for assigned and attached personnel.
- (g) Delousing service when deemed necessary by medical authority.

Assignment (Echelon) : Normally assigned to a CSSB (UEy/UEx).

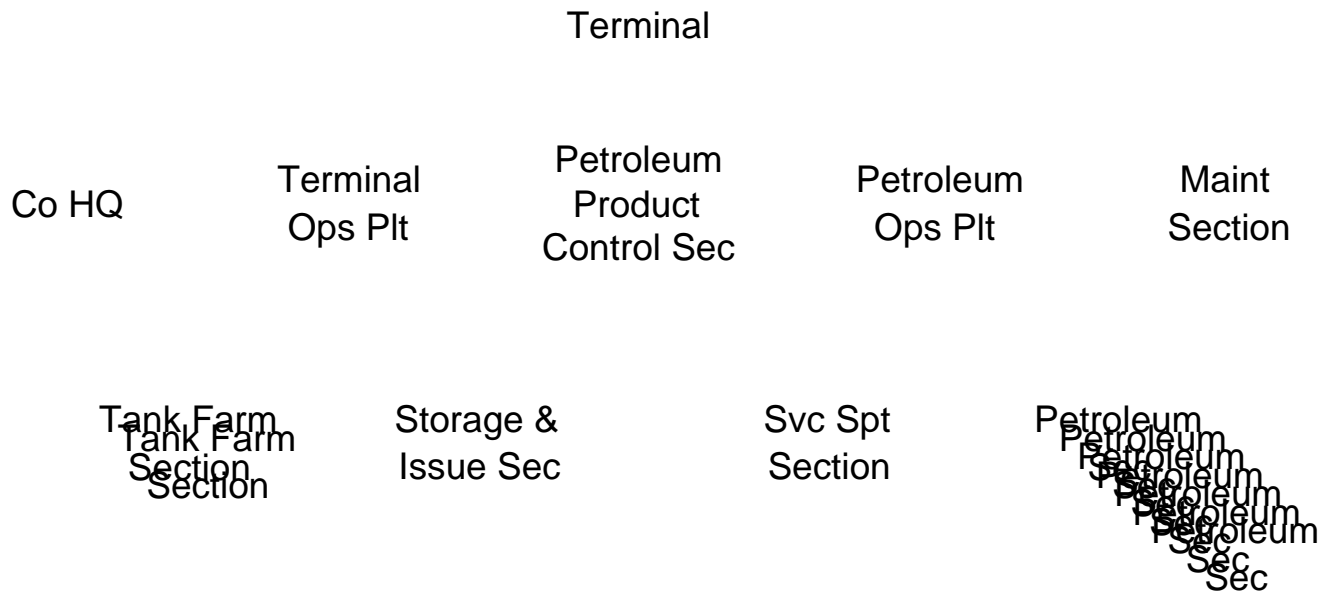
FOR OFFICIAL USE ONLY (FOUO)

FOR OFFICIAL USE ONLY (FOUO)

QM Petri Pipeline & Terminal Op Co

SRC: 10417L000

QM
Pipeline & 4-1-181-186



Mission : To operate petroleum pipeline and terminal facilities for receipt, storage, issue, and distribution of bulk petroleum products.

Capabilities: (Per Section 1 of TOE)

(a) Operates fixed terminal facilities for storage of up to 2,100,000 gallons of bulk petroleum. Normally consists of two tank farms, each with a capacity of up to 250,000 barrels **or** operates a tactical petroleum terminal (TPT) with a storage capability of up to 90,000 barrels.

(b) Operates up to 90 miles of pipeline for distribution of approximately 720,000 gals. per day.

(c) Operates six pump stations 24 hours per day to deliver bulk product through 6 or 8 inch multi-product coupled pipeline.

(d) Operates facilities for shipment of bulk product by coastal tanker, barge, rail, and tank trucks.

(e) Maintains a prescribed reserve of bulk product for the theater.

(f) Operates a Fuel System Supply Point (FSSP) for bulk issue

operations.

Assignment (Echelon) : To a Petroleum Pipeline and Terminal Operating Battalion, or a Petroleum Group, (UEy).

FOR OFFICIAL USE ONLY (FOUO)

FOR OFFICIAL USE ONLY (FOUO)
HQs, QM Petroleum Supply Co

SRC: 10527FA00

QM
POL Spt **1-0-15-16**

Co HQ Field
Feeding
Team

Mission : To provide command and control, administrative support , logistical support and field feeding support to the company and any attached elements operating within company headquarters area.

Capabilities: (Per Section 1 of TOE)

(a) Command and control, administrative, logistical, and field feeding

support to the company and any attached elements.

(b) Provides unit maintenance supervision, common tools, and record keeping for assigned and attached personnel.

Assignment (Echelon) : Assigned to a QM Petroleum Support Company (50K) (TOE 10420F100) in a CSSB or POL Sup Bn, or a QM Petroleum Support Company (210K) (TOE 10420F200), POL Sup Bn, (UEy).

FOR OFFICIAL USE ONLY (FOUO)

FOR OFFICIAL USE ONLY (FOUO)

SPO, QM POL Support Company

SRC: 10527FB00

SPO, QM
POL Spt
Company

1-1-6-8

Mission : Coordinate and supervise the operations of a Quartermaster Petroleum Support Company.

Capabilities:

- (a) Directs, coordinates and monitors the receipt, issue, and storage of bulk petroleum including the delivery of bulk petroleum by organic fuel dispensing vehicles to local high volume users.
- (b) Planning of all operations to comply with national, state, local and host nation environmental protection laws.
- (c) Establishes quality assurance for bulk petroleum.

Assignment (Echelon) : Assigned to a QM Petroleum Support Co (50K) (TOE 10420F100) or a QM Petroleum Support Co (210K) (TOE 10420F200), UEx/UEy

FOR OFFICIAL USE ONLY (FOUO)

FOR OFFICIAL USE ONLY (FOUO)

QM POL Support Platoon (50K)

SRC: 10527FC00

QM POL
Spt (50K)

1-0-52-53

Platoon
HQ

Tank
Farm
Tank
Farm

Area Spt
Section

Distr
Section

Mission : To receive, store, issue, and distribute bulk petroleum products in support of UEx or Theater operations.

Capabilities:

(a) Store 600,000 gallons at one location or 300,000 gallons each at two locations.

(b) It can receive and issue up to 200,000 gallons of bulk petroleum per day.

(c) The Area Support Section can store up to 120,000 gallons of bulk petroleum at one location and 60,000 gallons at each of two locations. It can receive and /or issue in any combination up to 120,000 gallons daily.

(d) The distribution section can distribute 48,750 gallons of fuel daily based on 75% availability of fuel dispensing vehicles at two trips per day.

(e) It can also establish and operate two hot refueling points using two FARE systems for transitory aircraft operating in their area.

Assignment (Echelon) : Assigned to a QM Petroleum Support Co (50K) (TOE 10420F100), CSSB or POL Sup Bn (UEX/UEY)

FOR OFFICIAL USE ONLY (FOUO)

FOR OFFICIAL USE ONLY (FOUO)

QM POL Support Platoon (210K)

SRC: 10527FD00

QM POL
Spt (210K)

1-0-52-53

Platoon
HQ

Tank
Farm

Area Spt
Section

Distr
Section

Mission : To receive, store, issue, and distribute bulk petroleum products in support of UEx or Theater operations.

Capabilities:

(a) Store up to 1,680,000 gallons at one location or 840,000 gallons each of two locations.

(b) It can receive and issue up to 300,000 gallons of bulk petroleum per day.

(c) The Area Support Section can store up to 120,000 gallons of bulk petroleum at one location and 60,000 gallons at each of two locations.

(d) It can receive and/or issues in any combination up to 120,000 gallons daily.

(e) The distribution section can distribute 48,750 gallons of fuel daily based on 75% availability of fuel dispensing vehicles at two trips per day.

(f) It can also establish and operate two hot refueling points using two FARE systems for transitory aircraft operating in their area.

Assignment (Echelon) : Assigned to a QM Petroleum Support Company (210K) (TOE 10420F200), POL Sup BN, UEy

FOR OFFICIAL USE ONLY (FOUO)

FOR OFFICIAL USE ONLY (FOUO)

QM Equip & Maint Support Platoon

SRC: 10527FE00

QM Equip
& Maint
Spt

1-0-41-42

Plt
HQ

Service
Support
Section

Maint
Section

Mission : Provides the specialized equipment and maintenance capabilities for the unit.

Capabilities:

- (a) Provides consolidated unit maintenance support to the company and any attached elements operating within the company HQ area.
- (b) Provides specialized equipment for site prep, berm-building, and repair.

Assignment (Echelon) : Assigned to a QM Petroleum Support Co (50k bags) (TOE 10420F100) or a QM Petroleum Support Co (210k bags) (TOE 10420F200), UEx/UEy.

FOR OFFICIAL USE ONLY (FOUO)

FOR OFFICIAL USE ONLY (FOUO)

QM Assault Hoseline Aug Tm

SRC: 10527FF00

QM Assault

0-0-15-15

Hoseline Aug 1m

Mission : To establish, maintain, and operate 4"hoseline.

Capabilities: Establishes, maintains and operates up to 10 miles of 4" hose line.

Assignment (Echelon) : To a QM POL Support Company (TOE 10420F100/200) UEx/UEy.

FOR OFFICIAL USE ONLY (FOUO)

FOR OFFICIAL USE ONLY (FOUO)

Aerial Delivery Support Company

SRC: 10537GA00

Aerial
Delivery
Support
CO HQ

1-0-10-11

Mission : To provide command and control, company level administration, and logistics support, for two to four Aerial Delivery Support Platoons.

Capabilities: Command and control, company level administration, and logistics support, for two to four Aerial Delivery Support Platoons.

Assignment (Echelon) : Normally assigned to a CSSB (UEx).

FOR OFFICIAL USE ONLY (FOUO)

FOR OFFICIAL USE ONLY (FOUO)

Aerial Delivery Office

SRC: 10537GB00

Aerial Delivery 1-1-1-3
Office

Mission : Directs all phases of the company mission and aerial delivery activities. Plans, coordinates, and supervises aerial delivery operations and directs company missions.

Capabilities: Operational planning and task execution supervision for all aerial delivery operations.

Assignment (Echelon) : Assigned to an Aerial Delivery Support Co Hq or a CSSB (UEx).

FOR OFFICIAL USE ONLY (FOUO)

Aerial Delivery Support Platoon

SRC: 10537GC00

Aerial
Delivery
Support

1-1-83-85

Platoon
HQ

Airdrop
Support
Section

Airdrop
Rigging
Section

Air Items
Maint
Section

Maint
Section

Mission : To pack parachutes and temporarily store and rig equipment and supplies for airdrop by the Army, Air Force, or other services. Provides personnel and cargo parachute supply, parachute packing, and field level maintenance of airdrop equipment.

Capabilities:

(a) 400 personnel parachutes per day / High Altitude Low Opening (HALO) 13 parachutes / cargo and small extraction parachute pack

(b) 75 ST per day (Containerized Delivery System or Type V heavy drop platforms)

(c) Field level maintenance of airdrop equipment / limited receipt, storage, and issue of air items.

Assignment (Echelon) : Assigned to an Aerial Delivery Support Co Hq or an Aerial Delivery Office (UEx).

FOR OFFICIAL USE ONLY (FOUO)

FOR OFFICIAL USE ONLY (FOUO)
HQs, QM Collection Co (MA)

SRC: 10548FA00

QM
Collection
Co

1-0-38-39

Co HQ

Maint
Sec

Fld
Feeding
Sec

Mission: To provide command and control, administrative, logistical, field feeding support, and unit level maintenance management to the company.

Capabilities: (per Section 1 of TO&E)

Command and control, administrative, logistical, field feeding support and consolidated unit level maintenance for organic units.

Assignment (Echelon): To a CSSB, UEy.

FOR OFFICIAL USE ONLY (FOUO)

FOR OFFICIAL USE ONLY (FOUO)

SPO, QM Collection Company (MA)

SRC: 10548FB00

SPO
QM Collection
(MA) 1-0-5-6

Mission: To coordinate and control mortuary affairs operations.

Capabilities:

- (a) Coordination and control of mortuary affairs operations
- (b) Planning and preparation of the company and/or the operating sections for deployment
- (c) Development and implementation of all policies and procedures for external support
- (d) Intelligence, security, and training of the operational sections of the company
- (e) Development and implementation of the commander's policies and procedures

Assignment (Echelon): QM Collection Company (Mortuary Affairs), UEy

FOR OFFICIAL USE ONLY (FOUO)

FOR OFFICIAL USE ONLY (FOUO)

Fwd Collection Platoon

SRC: 10548FC00

FWD
Collection
Platoon **1-0-26-27**

Platoon
HQs

Collection
Collection
Section

Collection Section

Mission: To establish, operate, and maintain up to four mortuary affairs collection points. Conduct limited search and evacuation operations of deceased US military, certain US civilian, and allied personnel. Receive, inventory, and coordinate evacuation of personal effects with remains; maintain essential records and reports.

Capabilities:

(a) Process 80 remains and personal effects per day from upto four locations. This includes evacuation of remains to the Main Collection Platoon.

(b) Operate a Mortuary Affairs Decontamination Control Point (MADCP) when supported by a chemical decontamination company.

Assignment (Echelon): QM Collection Company (Mortuary Affairs). When deployed, Forward Collection Platoons may be attached to a supported unit.

FOR OFFICIAL USE ONLY (FOUO)

FOR OFFICIAL USE ONLY (FOUO)

Main Collection Platoon

SRC: 10548FD00

Main
Collection
Platoon

1-0-23-24

Plt
HQ

Evacuation
Section

Receiving
Section

Mission: To establish, operate, and maintain a main collection point that receives remains and personal effects (PE) from the forward collection points.

Capabilities:

- (a) Process 400 remains daily
- (b) Coordinate evacuation of remains and personal effects to the theater mortuary evacuation point (TMEP).
- (c) Operate a Mortuary Affairs Decontamination Control Point (MADCP) when supported by a chemical decontamination company.

Assignment (Echelon): QM Collection Company (Mortuary Affairs), UEy

FOR OFFICIAL USE ONLY (FOUO)

FOR OFFICIAL USE ONLY (FOUO)

POL Quality Analysis Team

SRC: 10560GA00

POL QA
Team

0-0-2-2

Mission : To operate a petroleum laboratory used to perform complete specification and procurement acceptance testing of petroleum products

received from supported units.

Capabilities:

(a) Technical assistance for handling, storing, sampling, identifying, and performing quality evaluation of petroleum products and their containers for all US and allied forces on an area support basis.

(b) Provides petroleum quality surveillance testing under field conditions.

(c) Quality surveillance (B-level) testing on ground and aviation fuels and limited B-level testing on packaged petroleum products using data to make recommendations for proper use, reclamation, and disposal of the product.

Assignment (Echelon) : To an Aviation Support Battalion, Aviation Bde. To a POL Support Company, UEx.

FOR OFFICIAL USE ONLY (FOUO)

FOR OFFICIAL USE ONLY (FOUO)
POL Liaison Team

SRC: 10560LM00

POL Liaison Team 4-0-7-11

Mission : To provide liaison and coordination for bulk petroleum support between US, Allied Forces, and Host Nation.

Capabilities:

(a) Provides liaison and coordination for bulk petroleum support between US, Allied Forces, and Host Nations.

(b) Communicates available bulk petroleum data to higher headquarters.

(c) Determines transportation requirements for movement of bulk POL from non-US activities.

(d) Insures proper quality surveillance procedures are used to meet US military standards.

Assignment (Echelon) : To a Petroleum Group, UEy.

FOR OFFICIAL USE ONLY (FOUO)

FOR OFFICIAL USE ONLY (FOUO)

QM AOAP Mobile Lab Team

SRC: 10560LR00

QM AOAP
Mobile Lab
Team

0-0-10-10

Mission : To provide in-theater oil analysis support for aeronautical and limited non-aeronautical equipment.

Capabilities:

(a) Capable of processing 10,000 samples per month during 24 hour operations.

(b) Capable of performing quick sample analysis required during periods of intensive Aviation operations.

Assignment (Echelon) : To a Theater Aviation Sustainment Maintenance Group (TASMG), UEy.

FOR OFFICIAL USE ONLY (FOUO)

FOR OFFICIAL USE ONLY (FOUO)

HQs, QM Water Purif & Distr Co

SRC: 10567FA00

QM
Water
Purf & Dist

1-0-18-19

Co HQ

Maint
Sec

Fld
Feeding
Sec

Mission : To provide command and control for two to four platoons for company level administration, unit supply, food service and unit maintenance.

Capabilities: (Per Section 1 of TOE)

- (a) Command and control
- (b) Provides food service
- (c) Provides the supervision and common tools for unit level maintenance

Assignment (Echelon) : Assigned to a CSSB, UEx/UEy.

FOR OFFICIAL USE ONLY (FOUO)

FOR OFFICIAL USE ONLY (FOUO)

SPO, Water Purif & Distr Company

SRC: 10567FB00

SPO, Water 1-0-6-7
Purif & Distr

Mission : To provide coordination and control over all aspects of water purification, storage and distribution for the QM Water Purification and Distribution Company.

Capabilities:

- (a) Capable of split operations
- (b) Unit plans and operations for the company
- (c) Provides for water quality assurance for the company.

Assignment (Echelon) : Assigned to a Wtr Pur and Dist Company, UEx/UEy.

FOR OFFICIAL USE ONLY (FOUO)

FOR OFFICIAL USE ONLY (FOUO)

QM Water Purification Platoon

SRC: 10567FC00

QM Water
Purif

1-0-19-20

Platoon
HQ

Water
Purif Sec
(3K)

Water
Purif Sec
(1.5K)

Maint
Team

Mission : To produce potable water on an area basis.

Capabilities:

- (a) Produces 180,000 gallons of potable water using a freshwater source per day.
- (b) Water storage for 84,000 gallons of water.

Assignment (Echelon) : Assigned to a Water Purification and Distribution Company, UEx/UEy.

FOR OFFICIAL USE ONLY (FOUO)

FOR OFFICIAL USE ONLY (FOUO)

QM Water Storage & Distribution Platoon

SRC: 10567FD00

QM Water
Purif

1-0-32-33

Platoon
HQ

Storage
Section

Distribution
Section

Maint
Team

Mission : To receive, issue and transport potable water.

Capabilities:

(a) Provide for static storage of 80,000 gals of potable water at one location or 40,000 gallons at two locations.

(b) Distribute up to 33,000 gallons of water per day based on 75% availability of equipment and two trips per day.

Assignment (Echelon) : Assigned to a Water Purification and Distribution Company, UEx/UEy.

FOR OFFICIAL USE ONLY (FOUO)

FOR OFFICIAL USE ONLY (FOUO)

Aug Water Company HQ

SRC: 10567FE00

Co HQ

1-0-20-21

CO
HQ

Maint
HQs

Field
Feeding
Spt Teams

Mission : To provide command and control for two to four platoons for company level administration, unit supply, food service and unit maintenance.

Capabilities:

- (a) Command and control
- (b) Provides food service
- (c) Provides the supervision and common tools for unit level maintenance

Assignment (Echelon) : Assigned to a CSSB, UEy

FOR OFFICIAL USE ONLY (FOUO)

FOR OFFICIAL USE ONLY (FOUO)

SPO, Aug Water Company

SRC: 10567FF00

SPO, Aug
Water Co 1-0-6-7

Mission : To provide coordination and control over all aspects of water purification, storage and distribution for the QM Water Purification and Distribution Company.

Capabilities:

- (a) Capable of split operations
- (b) Unit plans and operations for the company
- (c) Provides for water quality assurance for the company.

Assignment (Echelon) : Assigned to an Augmentation Water Company,
Oey.

FOR OFFICIAL USE ONLY (FOUO)

FOR OFFICIAL USE ONLY (FOUO)

Aug Water Purification Platoon

SRC: 10567FG00

Aug Purif
Platoon

1-0-33-34

Platoon
HQ

Purif
Section
(3K)

Purif
Section
(1.5K)

Maint
Team

Mission : To produce potable water on an area basis.

Capabilities:

(a) Produces 360,000 gallons of potable water using a fresh water source per day and 240,000 gallons using a salt water source .

(b) Water storage for 168,000 gallons of water

Assignment (Echelon) : Assigned to an Augmentation Water Company, UEy.

FOR OFFICIAL USE ONLY (FOUO)

FOR OFFICIAL USE ONLY (FOUO)

Aug Water Storage Platoon

SRC: 10567FH00

Aug Water
Storage

1-0-45-46

Plt
HQ

Storage
Section

Maint
Section

Mission : To operate bulk water storage and distribution facilities for water transfer operations.

Capabilities: Store 960,000 Gallons of water

Assignment (Echelon) : Assigned to a Water Purification and Distribution Company, UEx/UEy .

FOR OFFICIAL USE ONLY (FOUO)

FOR OFFICIAL USE ONLY (FOUO)

QM Mortuary Affairs Company

SRC: 10568FA00

Main
Collection
Platoon

1-0-24-25

Plt
HQ

Maint
Section

Food
Service
Section

Mission: To provide command and control, administrative, logistical, and field feeding support, and unit level maintenance management to the company.

Capabilities:

Provides command and control, administrative, logistical, and field feeding support, and consolidated unit level maintenance for organic units.

Assignment (Echelon): To a CSSB, UEy.

FOR OFFICIAL USE ONLY (FOUO)

FOR OFFICIAL USE ONLY (FOUO)

SPO, QM Mortuary Affairs Company

SRC: 10568FB00

SPO
QM Mortuary
Affairs
Company

1-0-5-6

Mission: To coordinate and control mortuary affairs operations

Capabilities:

- (a) Plan and prepare the company and/or operating sections for deployment
- (b) Develop and implement all policies and procedures for external support
- (c) Direct activities pertaining to mortuary affairs operations
- (d) Direct intelligence, security, and training of the operational sections of the company
- (e) Develop and implement the commander's policies and procedures

Assignment (Echelon): QM Mortuary Affairs Company (UEy)

FOR OFFICIAL USE ONLY (FOUO)

FOR OFFICIAL USE ONLY (FOUO)

Personal Effects Platoon

SRC: 10568FC00

Pers Effects
Platoon

3-1-58-62

Platoon
HQ

Personal
Effects
Receiving

Personal
Effects
Storage

Personal
Effects
Disposition

Mission: To receive, store, safeguard, and ship personal effects of remains processed in theater

Capabilities:

Receives, stores, safeguards, inventories, processes, and ensures proper disposition of personal effects for approximately 500 remains

Assignment (Echelon): QM Mortuary Affairs Company, UEy

FOR OFFICIAL USE ONLY (FOUO)

FOR OFFICIAL USE ONLY (FOUO)

Evacuation/Mortuary Platoon

SRC: 10568FD00

Evacuation/
Mortuary

1-0-21-22

Plt
HQ

Processing
Section

Evac/Temp
Internment
Section

Mission: To operate a Theater Mortuary Affairs Evacuation Point (TMEP) and/or temporary internment site

Capabilities:

(a) Operate a TMEP which can process and evacuate 250 remains per day.

(b) Operate an in-theater mortuary when augmented with a second Evacuation/Mortuary Platoon and civilian personnel.

Assignment (Echelon): QM Mortuary Affairs Company (UEy)

FOR OFFICIAL USE ONLY (FOUO)

FOR OFFICIAL USE ONLY (FOUO)

Collection Platoon

SRC: 10568FE00

Collection
Platoon

1-0-32-33

Platoon
HQs

Collection
Collection
Section
Section
Section
Section
Section
Section

Mission: To recover, receive, process, secure, account, and evacuate deceased US military and certain US civilian personnel

Capabilities:

Set up and operate five Mortuary Affairs Collection Points (MACP) to receive, process, and coordinate 100 remains and personal effects per day from five separate locations. This includes the evacuation of remains to CONUS/OCONUS military mortuaries.

Assignment (Echelon): QM Mortuary Affairs Company (UEy)

FOR OFFICIAL USE ONLY (FOUO)

FOR OFFICIAL USE ONLY (FOUO)

Tactical Water Distribution Team

SRC: 10570LG00

Tactical
Water Distr
Team

0-0-20-20

Mission : To distribute potable water to Area units.

Capabilities:

Operates up to two water supply points using organic equipment.

Assignment (Echelon) : To an Aug Water Company, UEx/UEy.

FOR OFFICIAL USE ONLY (FOUO)

FOR OFFICIAL USE ONLY (FOUO)
QM Heavy Airdrop Supply Co

SRC: 10643L000

QM
Spt Co

6-5-272-283

Co HQ

Airdrop
Office

LT
Airdrop
Plt

Hvy
Airdrop
Plt

Maint
Section

LT Airdrop
Spt Sec

LT Airdrop
Rigger
Sec

Hvy Airdrop
Spt Sec

Hvy Airdrop
Rigger
Sec

Mission : To pack parachutes and temporarily store and rig equipment and supplies for airdrop by the Army, Air Force, or other services.

Capabilities: (Per Section 1 of TOE)

(a) Airdrop of 200 short tons of the following classes of supply on a daily basis:

Class I (includes water) = 20 ST

Class II = 10 ST

Class IV = 20 ST

Class V = 110 ST

Class VII = 10 ST

Class VIII = 10 ST

Class IX = 10 ST

(b) Personnel parachute support (packing and unit maintenance) for 450 Soldiers during a 45 day period.

(c) Assists in loading supplies and equipment into aircraft and in release of supplies and equipment from aircraft in flight.

(d) Technical advice and assistance in recovery and evacuation of airdrop equipment.

(e) Technical/rigger inspection of airdrop equipment upon initial receipt from supply sources.

(f) Performs Army portion of the joint inspection of airdrop loads.

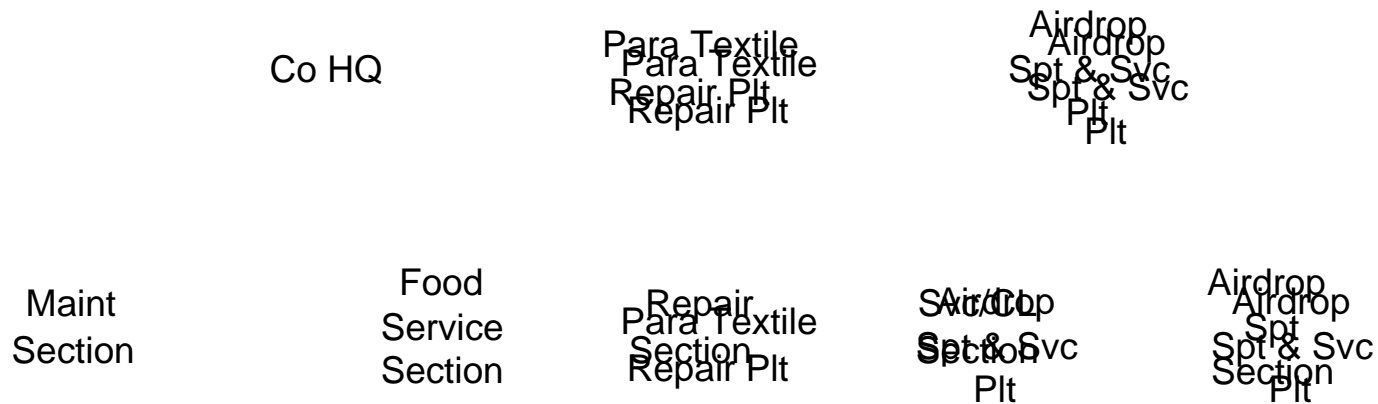
Assignment (Echelon) : To a CSSB, UEy.

FOR OFFICIAL USE ONLY (FOUO)

FOR OFFICIAL USE ONLY (FOUO)
QM Airdrop Equip Rep & Sup Co

SRC: 10649L000

QM
Airdrop Eq **5-5-124-134**
Rep & Sup



Mission : To provide airdrop equipment repair, supplies, and maintenance on airdrop equipment for Quartermaster (QM) Heavy Airdrop Supply Company, and two QM Light Airdrop Supply Companies.

Capabilities: (Per Section 1 of TOE)

- (a) Receives, classifies, and performs maintenance on all airdrop equipment (ADE) received from the QM Airdrop Supply Companies.
- (b) Requisitions, receives, inspects, stores, and issues airdrop equipment.
- (c) Provides 25 percent of the airdrop equipment required to pack and rig 440 short tons of equipment and supplies per day. The remaining 75 percent airdrop equipment is throughput from the depot to these units.

Assignment (Echelon) : Attached to the CSSB, UEy.

6-5
FOR OFFICIAL USE ONLY (FOUO)

FOR OFFICIAL USE ONLY (FOUO)
Heavy Mat Sup Co

SRC: 42427L100

HVY MAT
 SUP CO

4-2-149-155

CO HQ

DEPROC
 PLT

SUPPLY
 PLT

CO HQ

SUP OPS
 OFFICE

PLT
 HQ

PLT
 HQ

FIELD
 FEEDING
 SEC

UNIT
 MAINT

DEPROC
 SEC

MAT STOR
 & MT SEC

MAT STOR
 & HAND
 SEC

Mission: The quartermaster heavy materiel supply company will receive, store, maintain, deprocess (as required), and issue to support units class VII items of equipment, excluding aircraft and medical, marine, and railway mission-oriented equipment. It may also receive, store, issue, and classify Class VII which

results from theater two-level maintenance and retrograde actions.

Capabilities: (per Section 1 of TO&E)

(a) Receives, warehouses, and issues approximately 1,400 tons of class VII materiel per day. Initially, these items may be part of the PWRMS.

(b) Is capable of deprocessing approximately 300 tons of class VII equipment to ready-for-issue status per day. The deprocessing platoon is staffed for a single 12-hour shift because approximately 80% of class VII items received in the theater will have been previously deprocessed. Only the supply operation office and supply platoon operate on a 24-hour basis.

(c) Provides in-storage maintenance (not to exceed unit maintenance) on all materiel warehoused by the supply platoon.

Assignment (Echelon): Normally assigned to a CSSB, UEy, but can operate independently.

FOR OFFICIAL USE ONLY (FOUO)

FOR OFFICIAL USE ONLY (FOUO)

Map Distribution Platoon

SRC: 42518LC00

Map
Distribution
Platoon

1-0-21-22

Plt
HQ

Rec/Stor/
Ship
Section

Mission: Operate a map storage site to receive, store, maintain, and issue stocks of maps and map products. Prepare maps for distribution to authorized customers.

Capabilities:

This unit provides receipt, storage, in-storage maintenance, and issue of maps and other standard map products at UEx or TSC, up to 26 STONs per day.

Assignment (Echelon): To a contingency force, normally attached to a QM Support Company, UEy/UEx.

FOR OFFICIAL USE ONLY (FOUO)

6-99

FOR OFFICIAL USE ONLY (FOUO)

Aviation Repair Parts Supply Platoon

SRC: 42519LA00

Aerial
Delivery
Support

1-1-83-85

Airdrop
Support
Section

Airdrop
Rigging
Section

Mission : To pack parachutes and temporarily store and rig equipment and supplies for airdrop by the Army, Air Force, or other services.

Provides personnel and cargo parachute supply, parachute packing, and field level maintenance of airdrop equipment.

Capabilities:

- (a) 400 personnel parachutes per day / High Altitude Low Opening (HALO) 13 parachutes / cargo and small extraction parachute pack
- (b) 75 ST per day (Containerized Delivery System or Type V heavy drop platforms)
- (c) Field level maintenance of airdrop equipment / limited receipt, storage, and issue of air items.

Assignment (Echelon) : Assigned to an Aerial Delivery Support Co Hq or an Aerial Delivery Office (UEx).

FOR OFFICIAL USE ONLY (FOUO)

FOR OFFICIAL USE ONLY (FOUO)

CO HQ, Force Provider Co

SRC: 42524LA00

Force
Provider
Co HQ

2-0-11-13

Mission: To provide command and control, administrative, and logistical support to the company.

Capabilities: (per Section 1 of TO&E)

Provides the necessary command and control for one to six Force Provider Platoons operating in up to 6 independent Force Provider Modules, each supporting 550 soldiers or, with modules, complexed/combined, support a brigade size force of 3300 personnel.

Assignment (Echelon): To a TSC or CSSB, UEy. The company may be detached to operate separately in an austere environment.

FOR OFFICIAL USE ONLY (FOUO)

FOR OFFICIAL USE ONLY (FOUO)
SPO, Force Provider Company

SRC: 42524LB00

SPO 2-0-4-6
Force Provider
Company

Mission: To coordinate and supervise the operations of a Force Provider Company.

Capabilities:

(a) Coordinates all external support for the Company Headquarters and Force Provider Platoons.

(b) Provides the Force Provider Platoons with water quality assurance, preventive medicine assistance, purchasing and contracting support, administrative support, engineering coordination and planning, laundry planning and guidance.

Assignment (Echelon): To a Force Provider Company Headquarters
(TOE 42524LA00), UEy

FOR OFFICIAL USE ONLY (FOUO)

FOR OFFICIAL USE ONLY (FOUO)
Force Provider Platoon

SRC: 42524FC00

Force
Provider
Platoon **1-0-69-70**

Food

Laundry/

Water

Facility

POL

Service

Shower

Distribution

Support

Distribution

Mission: Provides one Force Provider module, supporting 550 soldiers, with climate controlled billeting, food service support, shower and latrine facilities, laundry service, and MWR facilities.

Capabilities:

Provides one Force Provider module, supporting 550 soldiers, with climate controlled billeting, food service support, shower and latrine facilities, laundry service, and MWR facilities.

Assignment: To a Force Provider Company Headquarters (TOE 42524LA00)

FOR OFFICIAL USE ONLY (FOUO)

FOR OFFICIAL USE ONLY (FOUO)
HQs QM Support Co

SRC: 42529FA00

QM
Spt Co

1-0-24-25

Co HQ

Maint
Sec

Fld
Feeding
Sec

Mission : To provide command and control for two to four platoons for company level administration, unit supply, food service and unit maintenance.

Capabilities: (Per Section 1 of TOE)

- (a) Command and control
- (b) Provides food service
- (c) Provides the supervision and common tools for unit level maintenance

Assignment (Echelon) : Normally assigned to a CSSB, UEy/UEx, but can operate independently.

FOR OFFICIAL USE ONLY (FOUO)

FOR OFFICIAL USE ONLY (FOUO)

SPO, QM Support Company

SRC: 42529FB00

SPO
QM Support
Company

1-1-9-11

Mission : To provide coordination and control over all aspects of supply operations and Supply Support Operations.

Capabilities:

- (a) Capable of split operations
- (b) Unit plans and operations for the company
- (c) Provides for stock accounting operations

Assignment (Echelon) : Assigned to 42529FA00, CO Headquarters, QM Spt Co, UEx/UEy

FOR OFFICIAL USE ONLY (FOUO)

FOR OFFICIAL USE ONLY (FOUO)

Subsistence Platoon

SRC: 42529FC00

Subsistence
Platoon

1-0-66-67

Rec/Stor/
Issue
Section

DS Support
Team (x8)

Subsistence
Distribution
Section

Maint
Support
Team (x3)

Mission : To provide subsistence support to approximately 24,000 Soldiers.

Capabilities:

- (a) Receives, stores and issues a cumulative of approx. 93.6 ST of Class I per day.
- (b) Provides refrigeration for perishable rations and augments subsistence personnel for Class I issue points.
- (c) Delivers perishable Subsistence to class I supply points.

Assignment (Echelon) : Assigned to 42529FA00, CO Headquarters,
QM Spt Co, UEX/UEY.

FOR OFFICIAL USE ONLY (FOUO)

FOR OFFICIAL USE ONLY (FOUO)

Area Support Platoon

SRC: 42529FD00

Area Spt
Platoon

1-0-26-27

Plt
HQs

SSA Spt
Section
(x2)

Pack/
Crate
Section
(x2)

Maint
Team (x2)

Mission: Provides supply support of classes II, III(P), IV, VI, limited CL IX and packaged water to support organizations.

Capabilities:

(a) Receipt, storage, issue, and accounting for 69.27 STONs of Class II, III (packaged), IV, and IX supplies, as follows:

CLASS II	13.47 STON	
CLASS IV		39.68 STON
CLASS III (PKG)	2.04 STON	
CLASS VII	10.12 STON	
CLASS IX	3.96 STON	

- (b) Can operate up to two different locations.
- (c) Provide limited configured loads.

Assignment (Echelon): Assigned to 42529FA00, CO Headquarters, QM Spt Co, UEx/UEy.

FOR OFFICIAL USE ONLY (FOUO)

FOR OFFICIAL USE ONLY (FOUO)

MHE Augmentation Team

SRC: 42529FE00

MHE **0-0-21-21**
Augmentation
Team

Mission : Provide additional materiel handling capabilities to the QM Support Company.

Capabilities:

- (a) Lift capabilities for individual items from 4,000 to 25,000 pounds.
- (b) Lift capabilities for containerized items up to 50,000 pounds.

Assignment (Echelon) : To A QM Support Company (42420F000), UEx/UEy.

FOR OFFICIAL USE ONLY (FOUO)